

# **The 2010 Population Census in Indonesia**

## **(Indonesia Country Report)**

### **1. Introduction**

As many others countries, Indonesia has also conducted a Population Census (PC) which began in 1815. Indonesia's first population census was during the British colonization under the government of Thomas Stamford Raffles. At that time, the census only covered the territory of java. After gaining independence in 1945, Indonesia has carried out a PC five times, in 1961, 1971, 1980, 1990 and 2000. Population census in Indonesia is performed every ten years and since 1980 has been carried out on the years ending in zero. The 2010 Indonesia's Population Census is the sixth PC since Indonesia's independence and is known as Population Census (PC2010).

Population census data includes basic data in the number of population, education level, economy, housing conditions and population mobility such as migration and urbanization. Since it is complete, comprehensive and accurate, the PC data is very useful for updating various national population data, including civil registration. PC data is also reliable source of national population information, mapping various potentials and vulnerabilities, and is useful in helping decision makers from the government and private sectors to formulate policies, program and budget allocations.

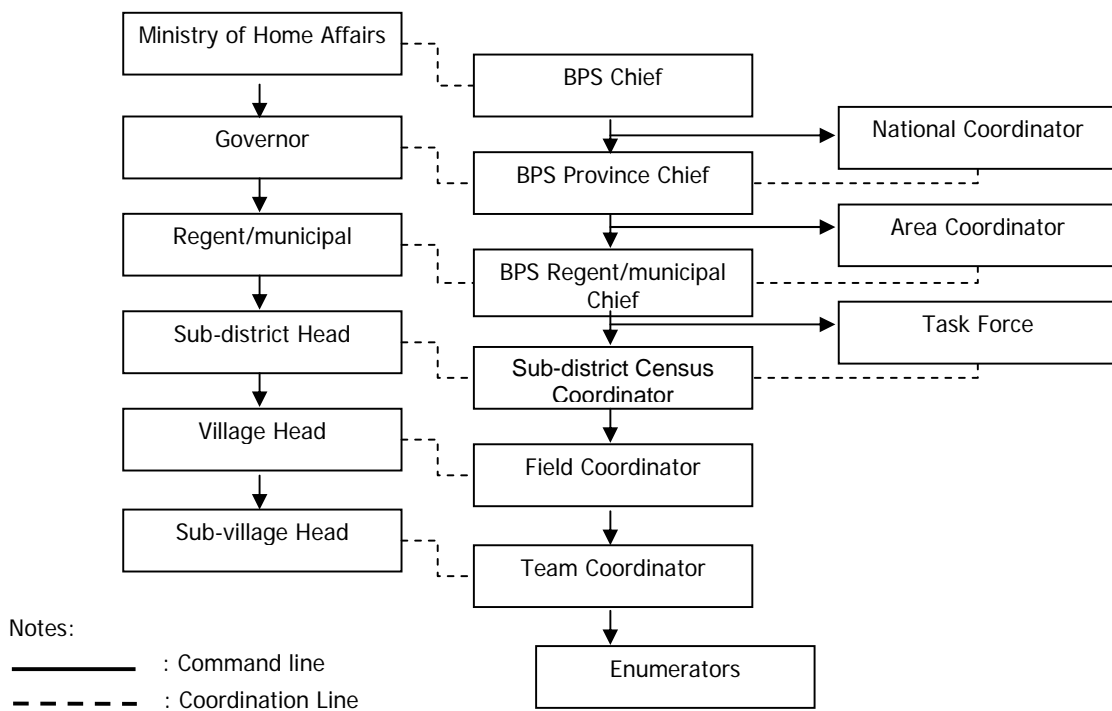
### **2. The Census Organization**

Badan Pusat Statistik/BPS (BPS-Statistics Indonesia) is responsible organization to conduct Census by law Number 16/1997 on statistics. PC is carried out simultaneously all over Indonesia down to the village/hamlet level which represents a complete and comprehensive source of data on the population as well as being the most accurate for the period it is carried out. Its scope is very wide and detailed.

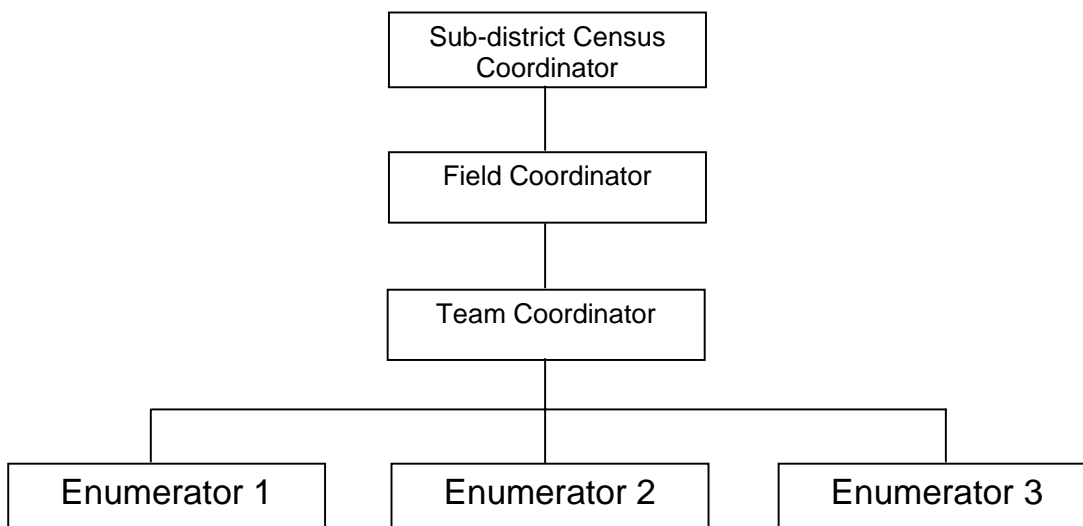
Collaborations are already being formed by BPS-Statistics Indonesia to assist the data collection team. The regular Tuesday Census (selasaan) planning meeting includes the participation of the academicians and research institutes to discuss the question to be included in the census. This regular meeting also involved three former census directors who are prepared to share their experiences and participate in all stages of the work.

Support also came from National Development and Planning Board and Ministry of Home Affairs with their structure have coordination line with BPS in every level. The relationship to the other organization in the national statistical system can be figured in this chart

## Organization Structure



## Field Organization



### Person Directly Involve in Census Preparation

- Technical Team in Population and Housing Subject: 29 persons
- Technical Team in Methodology Subject: 5 persons
- Technical Team in Data Processing: 6 persons
- Technical Team in Publicity, Law and Organization Subject: 6 persons
- Technical Team in Finance Subject: 4 persons
- Technical Team in Budget Subject: 5 persons
- Secretariats: 7 persons
- Resources person from various institution: 27 persons

The enumerators are from members of the community such as teachers, community figures, religious leaders, employees, students, health field officers or other community members who meet the criteria as enumerators. They are recruited and then sworn-in to maintain confidentiality of the census information. Since enumerators are recruited from their own communities, they can adjust their approach according to local custom for optimum data collection.

The criteria for census enumerator are people who well recognize their area/village, can write standard numbers and characters (scanner read) and the minimum education is senior high school. The criteria for supervisor (team coordinator) are same with the criteria of census enumerator with additional can lead the team, and has experience as BPS survey officer are preferable.

In the context of Indonesia as an island country and many part of Indonesia identified as remote area, we never insist the target of women to be involved in census supervisor. Obviously we open the same chance for man and woman to be participated in census

During the enumeration time, BPS-Statistic Indonesia conducting quality assurance monitoring activity by sending 1.619 persons from central to district all over Indonesia. The objectives of monitoring activity is as an early warning system to made sure the census activity running well by checking the sticker in the dwelling unit. The monitoring officer use rapid report using cellular phone named with SMS Gateway connecting to server. Then BPS regency/municipality chief could monitor census through internet. The monitoring officer by sex is presented below:

<b>Monitoring</b>	<b>Male</b>	<b>Female</b>	<b>Total</b>
<b>Officer</b>	664 (42.7%)	890 (57.3%)	1554
<b>Supervisor</b>	41 (63.1%)	24 (36.9%)	65
<b>Total</b>	705 (43.5%)	914 (56.5%)	1619

The activity of 2010 PC take place now is Post Enumeration Survey (PES). PES carried out soon after the census enumeration, scheduled in July 2010. The objective is to provide overall assessment of the quality of the census results. Instruments and procedures of the PES have been designed to assess the coverage of the census enumeration and the content of the census results. PES conducted on 1200 census block (CB) all over Indonesia with 1176 PES enumerators.

### **3. The Census of Population and Housing**

The 2010 Population Census conducted on May 1-31. Covering 88,361 villages at 6,579 sub-district in 497 districts/municipalities in 33 provinces all over Indonesia (not any part of the population excluded). The executors are 715,000 trained officers including enumerators (550.000 enumerators, 150.000 team coordinators, and 15.000 field coordinators). Field enumeration activity consists of listing and full enumeration. Listing is an activity to register building and households to obtain the number of household member and placing the sticker into the building. After the listing of all census blocks completed, the full enumeration of household member will follow. 10-30 minutes are needed to fill out the 43 question in the 2010 PC questionnaire.

The broad objectives of the census are basis for updating population data bases up to the lowest level of administrative unit, valuable input in monitoring the progress for achieving the millenium development goals (MDG) and other goals, basis for preparing small area statistics and population projection, basis for developing sampling frame for various surveys conducted between 2010-2020, and basis for developing population registers and population administration sytem.

With the rising awareness of the important of using population data in social researches, humanitarian aid distribution, development programs planning up to monitoring to eradicate poverty, as well as for broadening and developing businesses, population census data is used as a baseline in various activities by the following stakeholders:

**For policy makers**, various government agencies use population data in their work as the basis to determine development priorities to minimize vulnerability of certain group (children under five, the elderly, teenagers and those with physical disabilities) so as to fulfill their basic needs: food, clothing, housing, education, nutrition, health services community economic empowerment which are fundamental rights of the people. Some approach is also applied by business players (the private sector) to map business potentials and purchasing power of the people.

**For development agencies and organization**, a varying number of development institutions and organizations, such as professional, religious, social and community organization, CSOs (both local and international) as well as the United Nations (UN) who also carry out their work based on reliable population data to support development program in Indonesia. The 2010 PC data will help the government of Indonesia and various national and international development organizations to monitor development

performance and progress so as to achieve the Millennium Development Goals (MDGs) targeted for 2015.

The census questionnaire (i.e., C-Form) has been designed taking into consideration the United Nations recommendations for the 2010 Population and Housing Censuses; the monitoring of the achievement of the United Nations Millennium Development Goals (MDG); and the experiences in planning and conducting the previous censuses in Indonesia.

The 2010 census utilize four different forms:

- The L1 form is to list the physical structure of the buildings and the living quarters within them. During the listing operation the L form will also be used to collect number of people living in the living quarters. These data will be tallied and summarised upward to national level to obtain the total population by sex to be announced as the preliminary result of the census by mid-August 2010.
- The C1 form is to collect housing and household characteristics as well as the characteristics of individual member of the households (asking around 43 questions in total). The final results of the census will be published in August 2011 when the processing of the C forms is completed.
- The C2 form is the shortened version of C1, consist of 14 questions for enumerate population in special blocks such as remote areas, the electronic census used by diplomatic personnel, and other difficult households. The C2 form also translate into English, Japan, Korea and Mandarin language
- The L2 form is a listing of persons who are not in recognized households. They include the homeless, the itinerant, ships crewmembers who do not have an onshore official residence

Items collected in the census (using C1 form)

<b>Data Items</b>	<b>100 percent</b>	<b>Sample</b>
<b>On persons</b>		
- Sex	v	
- Age	v	
- Relationship to head of household	v	
- Marital Status	v	
- Religion	v	
- Disabilities (following UN recommendation)	v	
- Citizenship and ethnicity	v	

- Migration (district level): place of birth, current residence, place of residence 5 year ago;	v	
- Language: ability to speak Indonesian, daily language used at home;	v	
- Education: schooling status, educational attainment, reading and writing ability	v	
- Employment	v	
- Fertility: number of children ever born and still living	v	
<b>On households</b>		
- Mortality: including child, adult and maternal mortality	v	
<b>On housing</b>		
- Floor material	v	
- Floor area of the living quarter	v	
- Source of lighting	v	
- Source energy for cooking	v	
- Source of drinking water	v	
- Type of toilet facility	v	
- Kind of excreta disposal	v	
- Telephone	v	
- Access to internet	v	
- Ownership status of dwelling/living quarter	v	
- Proof of land ownership	v	

#### Some considerations in designing census questionnaire

BPS-statistics Indonesia also made a team to consult data users to determination the data items and question to be included in the census. The team consists of 27 resource person from academicians and research institutes who will also use data generated from 2010 PC for situation analysis and various populations, social, other academic studies and researches.

Based on my experience, most of respondent are women. That is the reason publicity or campaigned of 2010 PC already involving women, especially *Darma Wanita* organization (The Civil Servants' Wives Republic of Indonesia Organization) who campaigned to the traditional markets and distributing recycle bag. The involvement of women based on awareness that most of our respondents are housewife.

To encourage the full participation of communities all over Indonesia, campaigns of 2010 PC are carried out using various methods and strategies, such as the mass media, websites and social networking media. This campaign also involves partnership with the private sector, Civil Society Organization (CSOs), professional, religious and other community organizations. Furthermore, the 2010 PC also involve Elementary, junior High School students who can act as campaign agents for their families.

BPS-statistics Indonesia already made plan for census data analysis, cooperation with UNFPA have been made grand design for disseminating, analyzing and utilizing data from Indonesia 2010 Population census (Professor Terrence H.Hull as consultant). Webpage will be ready for release on August 16, showing the population trends, comparison with projection, and description of data issues. Census report will be present specific areas or group of person such as children under five, the elderly, and those with physical disabilities.

BPS-Statistics Indonesia also preparing the data documentation and guidelines for analysis of mayor variables. BPS also plans to organize researchers to analyze the census result related to the topics of their own special interest. To support the analysis activities, BPS-statistics Indonesia will produce hundreds of tables freely available to users. Every university population studies also supported to undertake provincial level analysis, but it doesn't need standardized platform like the last census. Its mean researchers have more independent analysis.

#### Dissemination of the census results

Temporary result of the 2010 PC will be announced by the President of the Republic of Indonesia in his state address at the MPR (People's Consultative Assembly) on August 17, 2010. The 2010 PC will be disseminated by way of various program involving representatives of the central and regional governments, the private sector, CSOs, national and international development organizations.

#### **4. Gender Concerns**

The government organization primarily responsible for gender concern is Ministry of Women's Empowerment. Although the government does not have any regulations to discriminate women in education, employment and politics, there is a significant difference in the number of women compared to men in many positions in government, private organizations and in politics. In the year 2000, the President of Indonesia issued a Presidential Instruction Number 9/2000 on Gender Mainstreaming in National Development. The implementation is every government organization must made planning and regulation which responsive gender. The government of Indonesia has National Action Plan on gender mainstreaming. The most important issues being address in the plan are making ad vocation for legislative, executive and judicative member through dialogue, road show and socialization for gender mainstreaming implementation.

And the second activity is Ministry of Women's Empowerment or working unit Women's Empowerment gives the input about actual gender issue in the House of Representative Meeting. Deputy of gender mainstreaming have given a stimulant facility to province to accelerate the implementation of gender mainstreaming such as technical training to make program and activity according to the local issues, training of trainers and strengthening working group on gender mainstreaming.

BPS-Statistics Indonesia has indirect link or coordination mechanism with Ministry of Women's Empowerment in the census activity. The cooperation between BPS-Statistics Indonesia and Ministry of Women's Empowerment are made some gender training and analysis in several years and Gender Based Violence Survey in year 2006. Gender disaggregated data produced by 2010 PC will be an important database for analysis by Ministry of Women's Empowerment.

BPS-Statistics Indonesia as a national statistical office has a unit responsible for gender statistics name People Welfare Statistics Directorate. Although this unit still new, this unit has to publish gender statistic indicator, it is intended to provide information concerning social and economic gaps which occurred between women and men. The data used are not only from census but also from surveys conducted by BPS-Statistics Indonesia, such as the National Social and Economic Survey (SUSENAS) and the National Labor Force Survey (SAKERNAS). In addition, administrative records of various related agencies and non government organization are also used.

Yes, indeed BPS-Statistics Indonesia ever conducted training on gender in year 2000 and 2002, with cooperation with Ministry of Women's Empowerment and Japan International Cooperation Agency (JICA). In 2000, the gender training covered participant from 5 provinces and central. Each province consists of two representatives, one from BPS and one from provincial Women's Empowerment office. In year 2002, the gender training continued expanded to another 8 provinces. The objective of this training is to increased broader knowledge of participants to understand about gender and gender development. More specific, this training have some objectives such as participant can identified indicator which responsive gender from sectors, making habits and increasing the capacity of participants to collect and presented statistics and indicator which responsive gender, making habits and increasing the capacity of participants to presented the indicators in chart form, and making habits and increasing the capacity of participants to evaluate statistics and indicators gender.

Jakarta, 9 July 2010

Dwi Retno Wilujeng W.U