


**ADAPT**  
Advanced Data Planning Tool



**PARIS 21**  
Partnership in Statistics for  
Development in the 21<sup>st</sup> Century



**Outline**

	PARIS21
	Development data planning
	What is ADAPT?
	Results

2

# PARIS21



**PARIS21**  
Partnership in Statistics for Development in the 21<sup>st</sup> Century

Improving lives through better statistics

Read our latest Newsletter

Upcoming Events

Latest News

<http://www.paris21.org/>

**Global partnership fostering national statistical capacities**

- Coordinating and convening users and producers of development data

**Strengthening statistical systems for better data**

- Promoting National Strategies of the Development of Statistics and increasing the availability, reliability, use and value of data

**Fostering innovation**

- Identifying, sharing and promoting innovations and best practices in data production, collection and dissemination

**Making the data count**

- Advocating for better use of statistics for better lives

# Development Data Planning

## Aligning the Universe



### Data needs

- Data gaps (Availability, disaggregation, frequency)

### Clear methodology

- Discrepancies between sources

### Consultative process

- Institutional roles and responsibilities

### Resource requirements

- Budget and donor support

### Monitoring priorities

- Feedback loop and reconciliation

## National Development Plans

<http://www.gov.za/issues/national-development-plan-2030>

Ministry of planning

Statistics Office

Sectors

Sub national alignment

<http://www.cgdev.org/blog/sdg-indicators-serious-gaps-abound-data-availability>

7

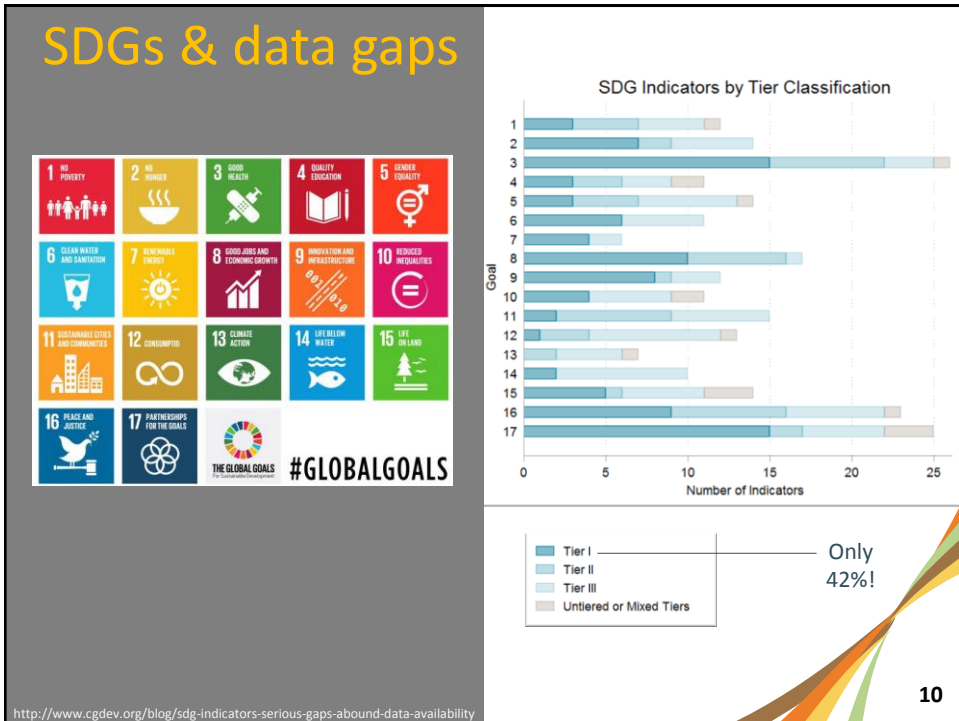
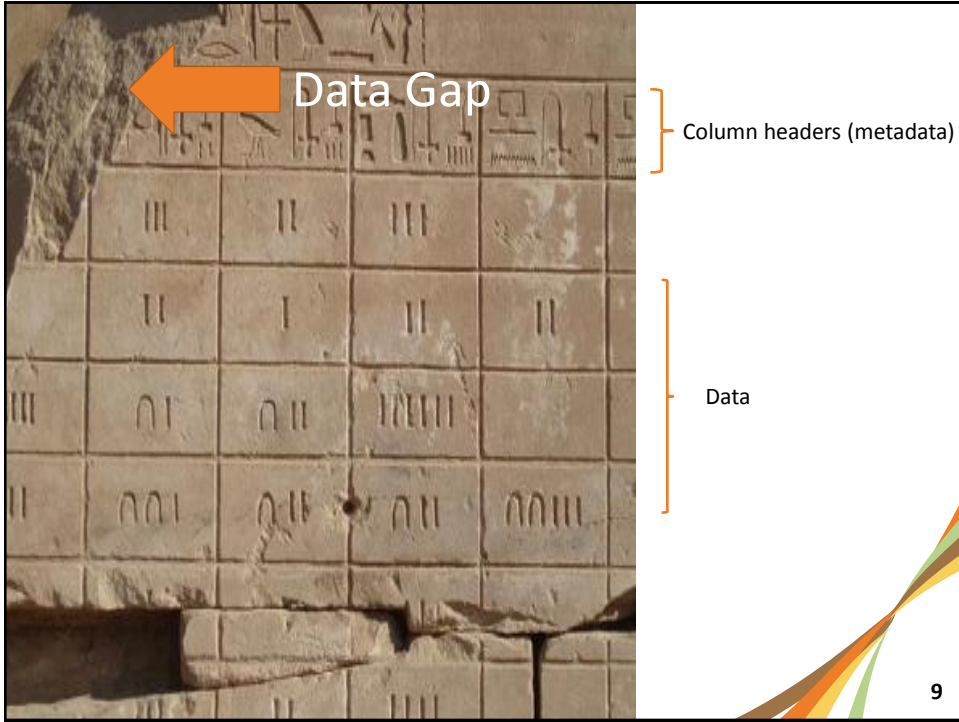
## Regional Development Plans

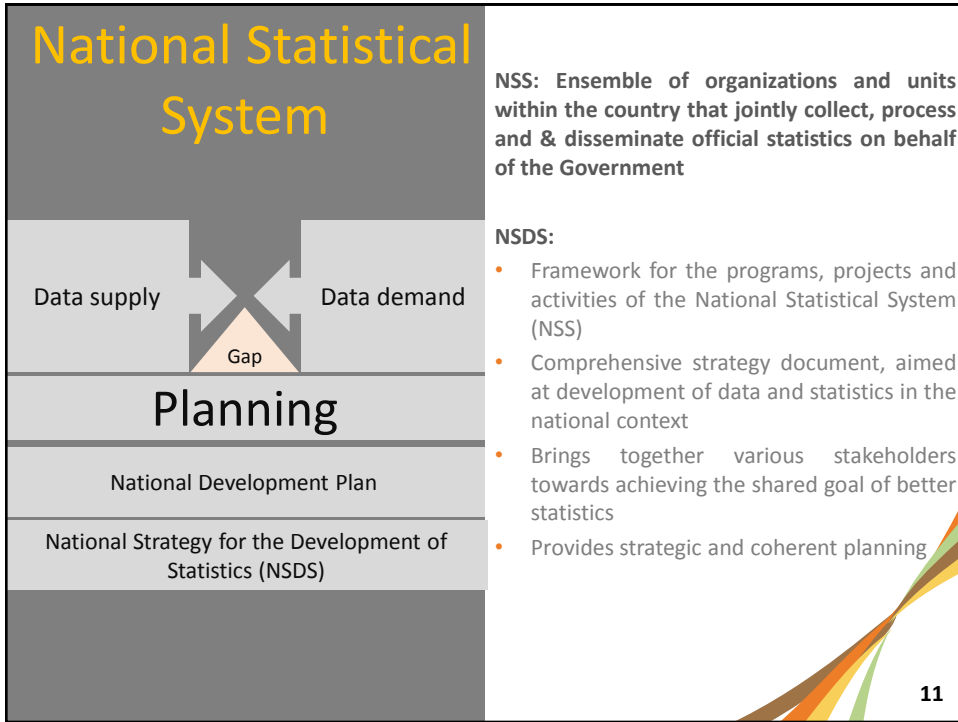
Common Indicator Frameworks  
in a region where there are  
greater common factors

- Carribbean
- South Asia
- Africa specific
- Sahel
- Andine Community


<http://www.cgdev.org/blog/sdg-indicators-serious-gaps-abound-data-availability>

8





# What is the ADAPT ?



Advanced Data Planning Tool

- Process
- Application

13

Process: Stage 1

Digitizing  
National Development Plan

Process

- Evaluate log frame structure
- Define hierarchy
- Identify indicators
- Assure integrity of unique IDs
- Identify Sector
- Think of SDG sector and possible relevance

*ADAPT*

- *Digitize hierarchy*
- *Identify the headings and IDs*

14

## Log Frames and Preparation

“Where initiated by the developing country, transparent, country led and country level **results frameworks** and platforms will be adopted as a common tool among all concerned actors to assess performance based on a manageable number of output and outcome indicators drawn from the development priorities and goals of the developing country.

Providers of development cooperation will minimise their use of additional frameworks, refraining from requesting the introduction of performance indicators that are not consistent with a countries’ national development strategy

Busan Action Plan for Statistics

15

### Process: Stage 2

Digitizing all data collection  
Activities and  
key meta data

#### Process

- Take inventory of all data sources
  - Census
  - Survey
  - Administrative data
  - Sample size
  - Geographic relevance
  - Design variables
  - Date of survey
  - Periodicity

#### ADAPT

- *Digitize data collections*
- *Establish key parameters for cost estimation*

16



## Process: Stage 3

### Evaluation of Indicators in the National Development Plan



#### Process

- Review all indicators
- Check key metadata such as
  - Full name
  - Unit of measure
  - Definition
  - Indicator availability
  - Compile Ability
  - External resources required
  - Desired frequency of reporting
  - Desired domain of disagg
  - Desired geographic disagg
  - Institutional arrangements
  - Where and when published

#### ADAPT

- *Digitize information*
- *Form the basis for scoring*
- *Map to data*

17

## Process: Stage 4

### Map indicators across Global, regional log frames

Cambodia: 39 (16%) mapped  
 Philippines: 29 (12%) mapped  
 Rwanda: 43 (18%) mapped

#### Jerven

1.08 billion per year additional  
 Demombynes and Sandefur (2014)  
 \$300 million per year additional  
 PARIS21 and SDSN  
 \$200 million per year

#### Process

- Identify potential mapping
- Desk work

#### ADAPT

- *Browse libraries*
- *Click and drag*

#### Why?

*State the real case for additional investment*

18

## Process: Stage 5

### Reconciliation



#### ADAPT

- Evaluate %age of National Indicators mapped to an external Logframe
- Evaluate score and areas where More support is needed for mapped Indicators
- Prioritize unmapped indicators (e.g. SDGs) and adopt plan to take up
- Localize all SDGs (Country specific approaches) and plan

19

## Process: Stage 5

### Gap Analysis and develop A capacity plan

### NSDS inclusion

#### ADAPT

- Evaluate score and quality gap
- Data gaps
  - No data
  - Time gaps (frequency)
  - Survey planning
- Data gaps
- Disaggregation gaps
  - Study domain and design
  - Geographic domain
- Capacity Gaps based on analysis
  - Indicator availability
  - Data availability
  - Compile ability
  - Resources required
- Financial gaps
  - Cost of bridging gaps

20

## Process: Stage 6

### Costing data collection

#### Process

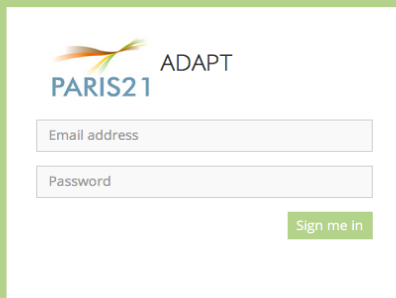
- Gather budgets
- Identify individual level cost inputs
- Sample size for surveys
- Estimated time overhead for administrative data
- Have unit level cost available

#### ADAPT

- *Develop a cost data base*
- *Estimate costs across time*

21

## Description



PARIS21 ADAPT

Email address

Password

Sign me in

- A web-based tool for planning data related activities in a National Statistical System
- Bring together key sector planners with monitoring role in the SDGs or NSDS under one virtual space: National Monitoring Log Frame.
- Use a cost data base to estimate cost of data collections
- Provide clear output, including charts and financial tables to present to planners, partners and policy makers

22

# Consultations

Name of Indicator	Off-farm working population 16 to 35 years under-employed
Reporting Date	2016-01-12
Dissemination URL	
Status	Proposed
Availability	
Level	Regional
Collection	
Velocity of Indicator	Slow
Sector	Labor
Goal	Increase formal employment

## Multiple monitoring frameworks in one place

- Leverage technology to post indicators to a central database and assign for reviewing and approval across the National Statistical System

## Associate planning metadata to the indicator

- When will it be reported?
- Where will it be disseminated?
- What is the status?
- Is the data currently available?
- At what geo level is it representative?
- Is it an international collection?
- Is the indicator fast moving?
- Who is the custodian of the data?
- Who will compute the indicator?
- What are the disaggregation variables?

## Reference indicator collections and adopt into the National Framework

Key: Unique Indicator Identifiers (NSO)

23

# Costing

Total Hrs in Sample	9000
Total Hrs	120000
Estimated Unit Cost	120 <input type="text" value="Per Household"/> <b>1,280,000</b>

**Financing**

Home > Financing

Date Source: DHS

Organizations/Roles: USAID  +

Assigned Organizations: World Bank (20000) + USAID (100000) + Government (20000) +

Funded amount: 700000  Estimated cost: 1080000

## Three levels of cost management

- Do quick estimates based on historical per household or per person (unit) cost of collections
- Do more thorough estimations using cost of inputs
- Full data collection budget using Generic Statistical Business Process Model

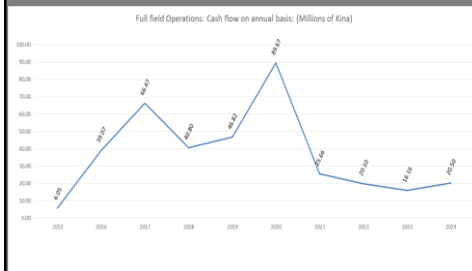
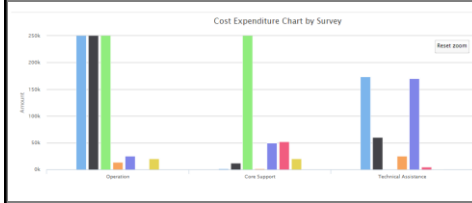
## Attribute financing commitments

## Capture unknown costs

- International technical assistance
- Sector administrative systems

24

# Charting



- Visualization and sensitivity analysis
  - Visualize funding existing gaps
  - Production of useful planning charts such as cash flow statements etc.

25

# Results

# Benefits

**Economic Development and Poverty Reduction Strategy -2**

Found 49 indicators

ID	Goal	Indicator	Status
1.1.1	1. Increased national income 2. National Income and Poverty Reduction	GDP per capita	Approved
1.2.1	2. Reduced poverty 1. National Income and Poverty Reduction	Population below the poverty line	Approved
1.3.1	3. Reduced extreme poverty 1. National Income and Poverty Reduction	Population below the poverty line living in extreme poverty	Approved
2.4.1	4. Increased electricity generation capacity 2. Economic Transformation	Electricity generated	Approved
2.5.1	5. Accelerated growth exports 2. Economic Transformation	ISI Exports to GDP (Value of exports goods and services)	Approved

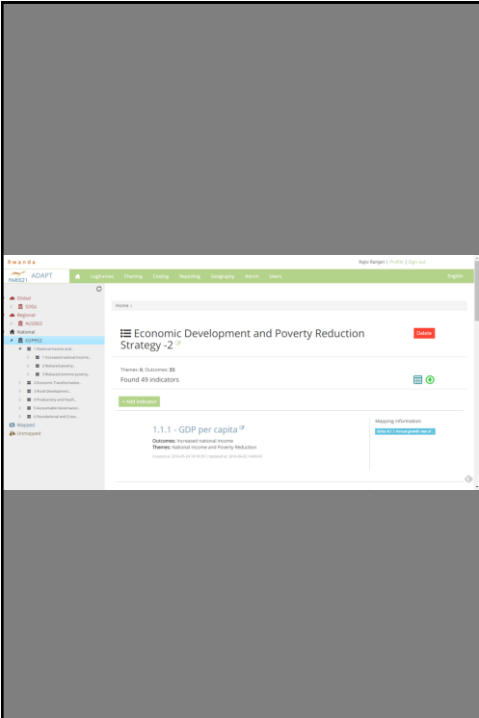
Full field Operations: Cash flow on annual basis: (Millions of Kina)

- Country specific development planning frameworks mapped to various other logframes and shared.
- Data gaps identified and understood
- Possible data sources identified and costed
- Data collection activities scheduled
- Required NSDS annexures produced
- Resource requirement (funding) proposals ready
- Monitoring of NSDS

- ▶ Global
- ▶ SDGs
- ▶ Regional
- ▶ AU2063
- ▶ Mapped
- ▶ AU2063 - SDGs
- ▶ Unmapped
- ▶ AU2063
- ▶ SDGs
- ▶ Countries
- ▶ Bolivia
- ▶ Cambodia
- ▶ Cameroon
- ▶ Philippines
- ▶ Rwanda
- ▶ EDPRS2
  - ▶ 1 National Income and...
  - ▶ 2 Economic Transformation...
  - ▶ 3 Rural Development...
  - ▶ 4 Productivity and Youth...
  - ▶ 5 Accountable Governanc...
  - ▶ 6 Foundational and Cross...
- ▶ Mapped
- ▶ Unmapped

27

# Pilots



1. Rwanda
2. Cameroon
3. Philippines
4. Cambodia
5. Bolivia

29

Version 1.1 end of this year

- Log frame development
- Mapping
- Reconciliation
- Localization
- Gap Analysis I

Still under development!

Expect to find issues

30