

Reflection Exercise



Does the legal and policy framework provide for the allocation of financial resources to increase women's ownership and control over land?

1. Why do you think this proxy was chosen?
2. How is this proxy relevant in your country?



Step 1: Reflect on the questions
Step 2: Write your answers on the colored paper

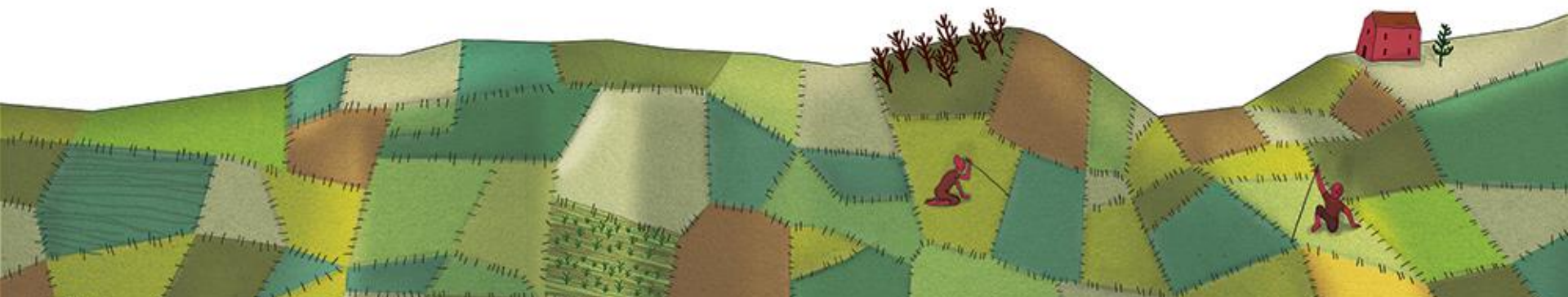


SDG Indicator 5.a.2



Proxy D

Allocation of financial resources to increase women's ownership and/or control to land



Proxy D – Fund to increase women’s ownership and/or control of land



Does the legal and policy framework provide for the allocation of financial resources to increase women’s ownership and control over land?



Why include a proxy on a fund to increase women's ownership and/or control of land?



- **Legal reforms** to improve women's land rights often **remain on paper**. Key reasons for the lack of implementation are:
 - **Lack of governmental funds** devoted to the implementation of reforms aiming at gender-equitable land tenure
 - **Social and cultural barriers** that prevent women from entering the land market or exercising their legal rights to land.
 - Lack of awareness in land governing institutions or women's legal rights



Proxy D – Fund to increase women’s ownership and/or control over land



- Governmental funding mechanisms specifically addressed to women with the objective of increasing women’s ownership and control of land are deemed to translate in **de facto** increase of women owners or/and holders of land (*i.e. Public credit systems with flexible eligibility criteria for women*)

Financial resources
are allocated...

for the purpose of increasing women’s ownership
and control over land

Key Features of Proxy D



- **Specific** budgetary commitment to increase women's ownership and control over land –
- The funding allocation must meet **two conditions**:
 - Women are the **sole or main beneficiaries**
 - The objective of the fund is to increase women's ownership and control over land **OR** over a set of productive resources, including land.



Additional Features of Proxy D



- **Likely sources.** Gender equality Law, land law/act, land administration program. Secondary legislation can be very relevant for this Proxy.
- **Temporality.** There is not a specific requirement with respect to the length but it must have a long term duration.
- **The origin of the funds is not relevant**



Threshold for Proxy D



Proxy **IS** Present

- ✓ A long-term government credit program that explicitly prioritizes credit to rural women with one of its objectives to improve women's land ownership
- ✓ A provision providing that funds targeting women's access to financial services, credit and insurance products are to be earmarked from a particular budget, and these funds also have as objective to increase women's access or ownership/control over land.

Proxy **IS NOT** Present

- ✗ Provisions providing for funding for gender equality and women's empowerment *in general*, without reference to land ownership or control over land
- ✗ Provisions that give priority to improving access to land for women without earmarking specific funds (i.e. a commitment to prioritize female heads of households in determining the allocation of unclaimed land)
- ✗ Waivers and tax exceptions for promoting women's land ownership

Example of Proxy D in Legislation



Decree Establishing Land Fund for Rural Women, 2010:

The purpose of this law is to create a fund for the purchase of land with conditions of gender equality for rural women, with the aim of granting legal and material appropriation of the land in favour of rural women, which will allow, in addition to improving the quality of life of the family household, access to financial resources, prioritizing those women heads of households of low economic resources.

- ✓ The proxy is present. It explicitly refers to the establishment of a fund which is aimed at improving women's legal and physical access to land and financial resources.

Questions for Plenary Discussion



- Do you have any professional or personal experience with government budgetary commitments, and of good practices in this area?
- Do you know if long term land related or other agriculture programs have associated resolutions in terms of budget commitments in your countries?
- Do you know if the proxy is present in your country's legislation? If not, what are the opportunities and obstacles to law reform in this area?



Role Play Exercise – Proxy D



- The Government of Miralilandia wants to revise the existing law addressing poverty and gender inequality in rural areas.
- As an organization supporting women's land rights, prepare your submissions for the Minister to contribute to the new law.
- Consider the following issues in your submission:
 - What are the loopholes in the existing law?
 - What are the necessary steps to improve the law and make it more effective?
 - How should the fund be operationalized? How would it be implemented?
 - What would the challenges be in the implementation of the fund?
 - What other measures are necessary to ensure the fund is effective?
 - What kind of strategy would be used to encourage other entities to commit resources to the fund?

