

Brainstorming Exercise



Does the legal and policy framework mandate women's participation in land management and administration institutions?

- What is land governance? What are the different levels of land governance? What type of institutions make decisions on land?
- Do you think it is important to have women represented in land governance decision-making? Why?



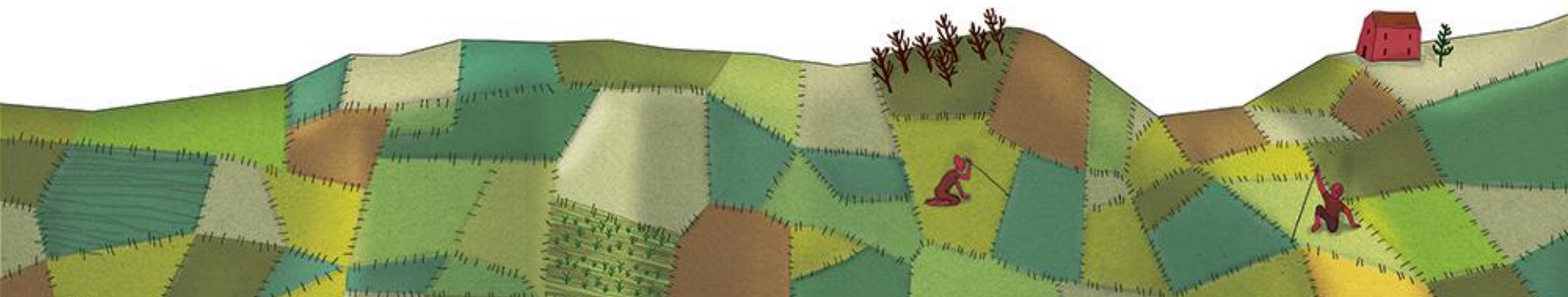


SDG Indicator 5.a.2

Proxy F

Women's participation in land institutions

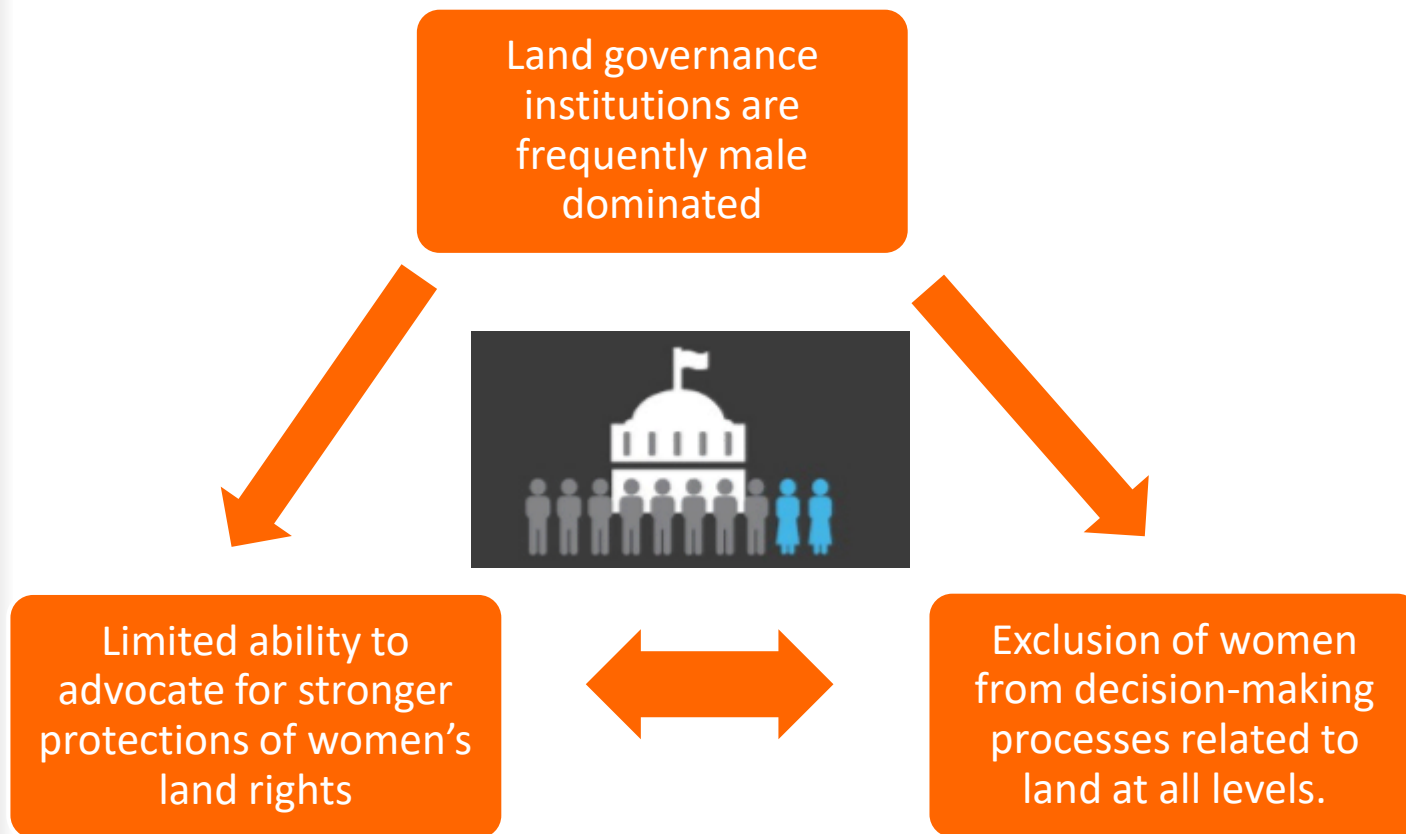
Workshop on SDG Indicator 5.a.2, 2018



Does the legal and policy framework mandate women's participation in land management and administration institutions?



Why include a proxy on women's participation in land institutions?

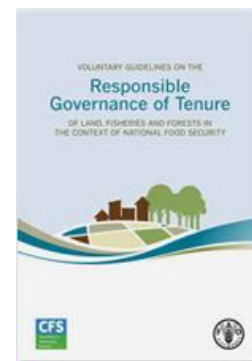


Why include a proxy on women's participation in land institutions?

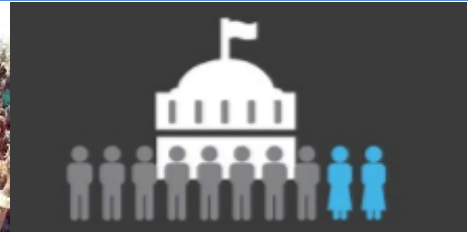


A mandatory quota to ensure women's participation in land administration and management institutions must be provided by law

- General recommendation N. 24 of the CEDAW Committee on temporary special measures including quotas for women in public positions
- VGGTs strongly recommend for gender-equitable land institutions at all levels



Scenario for Proxy F



A quota for women's participation...

is established by legal provisions and implementing legislation in land management and administrative institutions



Key Features of Proxy F



- The quota must be expressed in mandatory terms (“must” or “shall” - not “may”)
- Quota may appear in the form of:
 - A minimum number/percentage of women staff
 - A minimum number/percentage of women who must be elected or appointed
 - A statement on the need for a gender balance
 - Quota must concern an institution with responsibilities in land management or administration
- Quota may apply to the gender composition of the whole body or specifically to certain positions within the institutions



Threshold for Proxy F



Proxy **IS** Present

- ✓ A Constitutional provision stating that no elected or appointed body may be made up of more than X/Y members of one gender.
- ✓ A provision stating that at least X number of the members of the District Land Board shall be women.

Proxy **IS NOT** Present

- ✗ A provision “encouraging” a state to assure a percentage of women are represented on land administration or management bodies without establishing a mandatory minimum percentage or number.
- ✗ Provisions only referring to a minimum number of women running for elections in a local committee which are not followed by additional provisions on participation .

Threshold for Proxy F



Communal Land Reform Act, 2001:

Art. 35: Composition of Communal Land Boards

*“1. Subject to section 5, a **board** consists of the following members to be appointed by the Minister:*

(a) one representative from each of the Traditional Authorities within the board’s area, nominated by each such Authority;

(b) the regional officer of the regional council concerned, and, if the board’s area extends over the boundaries of two or more regions, the regional officer of each such region;

*(c) **four women**, of whom -*

(i) two are women engaged in farming operations in the board’s area; and

(ii) two are women who have expertise relevant to the functions of a board.”

✓ The proxy is present. The law provides for compulsory participation of a number of women in communal land boards.