

REGIONAL COURSE ON STATISTICAL BUSINESS REGISTER: THAILAND'S EXPERIENCE

National Statistical Office, Thailand

21-25 May 2018

Perak, Malaysia



OUTLINE

1

National statistical system in Thailand

2

Role of TNSO in producing establishment statistics

3

Economic censuses to sampling frame

4

Sampling frame of establishments

5

State of Statistical Business Register in Thailand

NATIONAL STATISTICAL SYSTEM IN THAILAND

- ❖ Decentralized statistical system is adopted as the National Statistical System in Thailand
- ❖ Each government agency may produce data and statistics for their own uses.

Leading to

- ❖ Difficult to maintain consistency in statistical information among government units, as well as, difficult to avoid duplication in the compilation of statistics.

NATIONAL STATISTICAL SYSTEM IN THAILAND

- ❖ TNSO is in charge of the coordination among agencies
- ❖ TNSO has developed the Thailand's Statistical Master Plan (TSMP) aimed to drive the national statistical development system



2nd TSMP (2016-2020) aims to develop statistical data in accordance with the standard and quality, and to integrate, exchange and link data between agencies so that data can be jointly applied for decision and policy making for the country development at all levels.

ROLE OF TNSO IN PRODUCING ESTABLISHMENT STATISTICS

- ❖ Establishment statistics is obtained from various government units. For example, TNSO, Ministry of Industry, Ministry of Commerce, etc.
- ❖ TNSO has conducted 2 major censuses on establishments:
 - **Industrial Census**
 - **Business Trade and Services Census**
- ❖ TNSO has also conducted a number of establishment surveys such as accommodation survey, business trade and services survey, quarterly retail survey, construction survey, establishment survey on the use of ICT, etc.

ECONOMIC CENSUSES TO SAMPLING FRAME

❖ TNSO has conducted two economic censuses:

- **Industrial Census** (frequency: 5 years)
- **Business Trade and Services Census** (frequency: 10 years)

in order to grasp the nation-wide statistical information on establishments and obtain *sampling frame*

❖ Both economic censuses are divided into listing stage and enumeration stage

- The listing stage is to obtain the basic information → **Sampling frame**
- The enumeration stage is to obtained in-depth detail

ECONOMIC CENSUSES TO SAMPLING FRAME

Listing stage

Scope and coverage

- ❖ All establishments with at least 1 person engaged in economic activities according to the Thailand Standard Industrial Classification (TSIC 2009) which is based on ISIC Rev.4

Data items

- ❖ Name, address of the establishment, and contact information
- ❖ Type of economic activities
- ❖ Form of legal and economic organization
- ❖ Foreign investment or share holding
- ❖ Number of persons engaged
- ❖ ID card number for individual proprietor / Register number of juristic partnership, company limited, public company limited

SAMPLING FRAME OF ESTABLISHMENTS

Sampling Frame of establishments

- ❖ A listing of all possible establishments along with basic information about the establishments, from which the sample is selected
- ❖ Current sampling frame of establishments is based on the 2017 Industrial Census

Frame data

- ❖ Identification data (Establishment ID)
- ❖ Classification data (TSIC/ISIC, Size of establishment classified by number of person engaged, etc.)
- ❖ Contact information (Name of establishment, address of establishment, telephone, etc.)
- ❖ Maintenance data (Date of last updating)

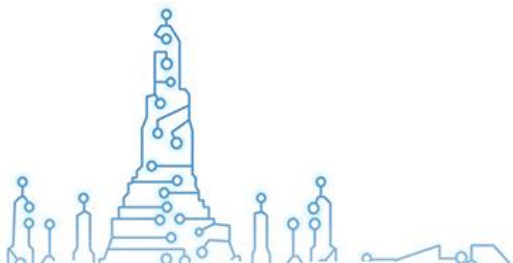
SAMPLING FRAME OF ESTABLISHMENTS

Sources of sampling frame

- ❖ Based on result of economic censuses
- ❖ Updated by census or survey results

Frame maintenance is conducted by using

- ❖ Census results
- ❖ Survey results



SAMPLING FRAME OF ESTABLISHMENTS

Frame Maintenance

Economic censuses

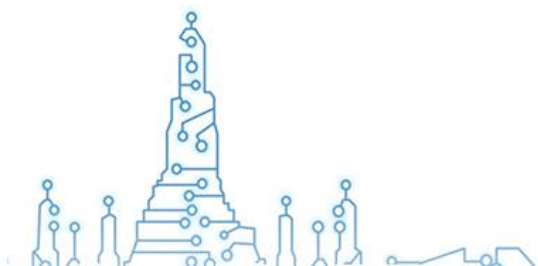
- ❖ The enumerators visit all establishments in the establishment list prepared by the central office and also visit a newly formed establishment, if find any
- ❖ Check and confirm whether there is any changes:
For example, still in operation, closed down, temporarily closed, located in other place, business activity changed, etc.
- ❖ The newly formed establishments are added.
- ❖ Closed down establishments are updated the status in the data file.
- ❖ All establishments changed are updated.

SAMPLING FRAME OF ESTABLISHMENTS

Frame Maintenance

Economic surveys

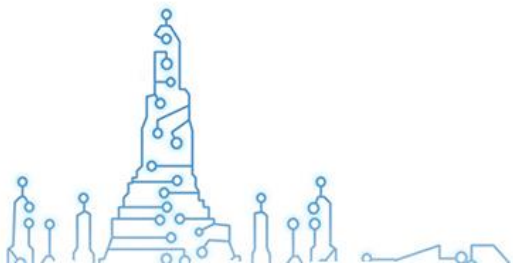
- ❖ Similar to the census **except** the newly formed establishment is not added in the establishment data file



SAMPLING FRAME OF ESTABLISHMENTS

Problems and issues in compiling and updating the sampling frame

- ❖ Costly to compile and maintain
- ❖ The newly formed establishment is not added unless the economic census is carried out.



STATE OF STATISTICAL BUSINESS REGISTER IN THAILAND

State of SBR

- ❖ Currently, Thailand haven't had the completed Statistical Business Register for use in census and survey.
 - Due to decentralised statistical system
 - However, TNSO has tried to integrate data with other government units owning establishment data/statistics.

STATE OF STATISTICAL BUSINESS REGISTER IN THAILAND

❖ In 2016, TNSO has tried to integrate and compare the establishment data of TNSO with administrative records of government units, as follows:

- Department of Business Development (Ministry of Commerce)
- Industrial Estate Authority of Thailand (Ministry of Industry)
- Department of Industrial Works (Ministry of Industry)
- Social Security Office of Thailand (Ministry of Labour)
- Community Enterprise (Ministry of Agriculture and Cooperatives)

STATE OF STATISTICAL BUSINESS REGISTER IN THAILAND

- ❖ There are many **obstacles** in integrating data
 - Definition of each government unit is different.
 - Different objective in collecting data or statistics

- ❖ In the future, TNSO might **overcome** these obstacles by
 - Extremely drive and enforce Thailand's Statistical Master Plan (now is on the 2nd TSMP) which is end by 2020.
 - standardize data (definition, classification, structure, etc.)
 - integrate, exchange and link data between agencies

THANK YOU FOR YOUR ATTENTION

visit our website at www.nso.go.th