

# Lao Statistics Bureau Country Report

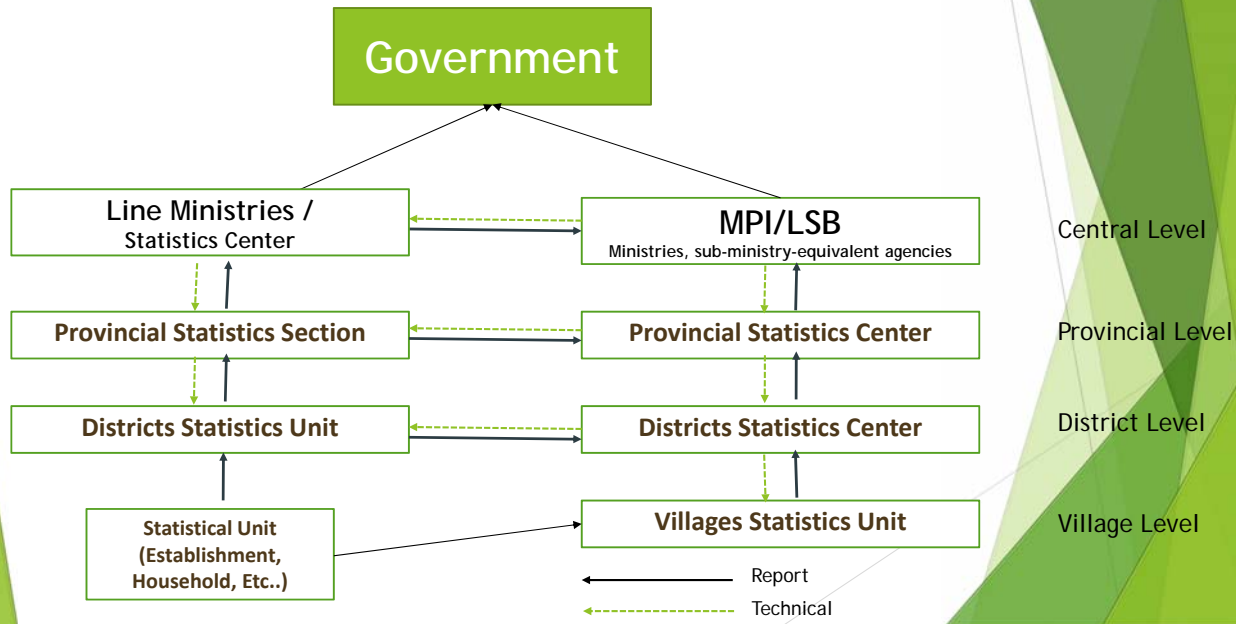
Regional Training Course on Agricultural Cost of Production Statistics  
23-27 April 2018, Daejeon, Republic of Korea

## Content

- ▶ Country Profile
- ▶ References and National Statistical System (NSS)
- ▶ The Role of Department of Economic Statistics (LSB) and Department of Planning and Cooperation (MAF)
- ▶ Situation of Agricultural Statistics
- ▶ Data Source and Classification
- ▶ Issues and Challenges
- ▶ The way forward



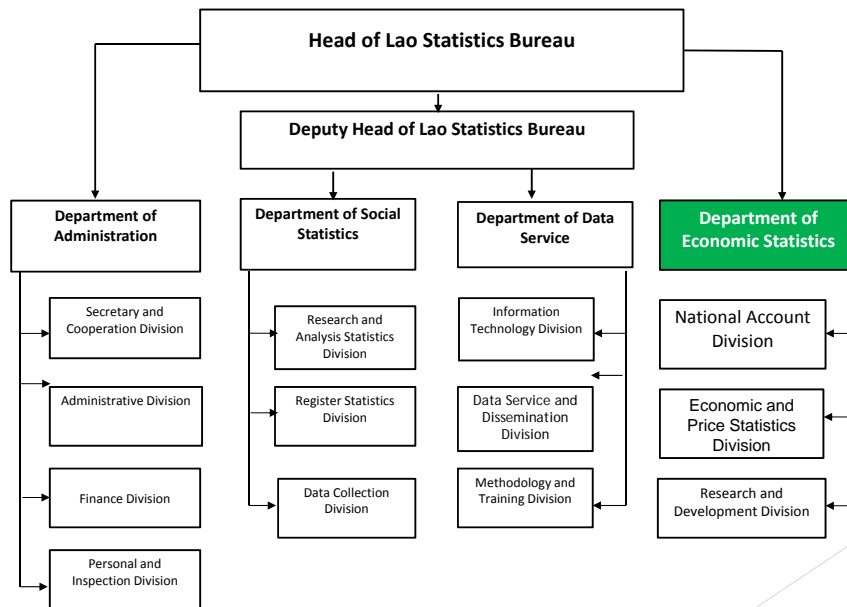
# National Statistical System



## The Role of Department of Economics Statistics, LSB

- Develop work plan and activities to implement economic statistics compilation following the Statistics Law and SSDNSS;
- Compile and collect data and information related to economic statistics;
- Follow, monitor and compile data from statistical system (vertical and horizon)
- Identify the economics indicators
- Produce and disseminate official Statistics
- Ensure methodology and enhance capacity of provincial and line ministries on compiling economic statistics;

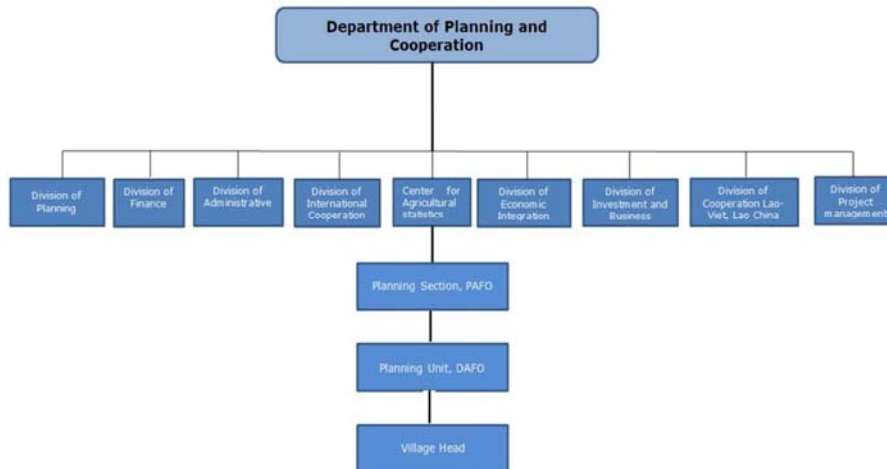
## Structure of Organization (DES/LSB)



## Organizations of Department of Planning and Cooperation (MAF)

- Ministry of Agriculture and Forestry (MAF) is the major supplier and, at the same time, the consumer of agricultural statistics. Within MAF, different departments are responsible for statistical undertakings of the ministry, namely, four (4) technical departments and the Department of Planning (DOPC) as the overall coordinator of the ministry's statistics.
- Department Concern collects and compiles data on Various sources and prepares monthly and seasonal reports based on information received from provincial and district offices and Supply Agricultural Statistics data to Center for Agricultural Statistics, DOPC, MAF

## Structure of Organization (DPC/MAF)



## Situation of Agricultural Statistics

### Annual Statistics Year Book

1. Crop (27 Item of Production, yield and harvested Area)
2. Livestock
3. Irrigation
4. Forestry
5. Meteorology
6. Others

## Data collection and Classification

### ○ Two main data sources

- Survey data
  - Agriculture Censuses 1998/90, 2010/11
  - Lao Expenditure and Consumption Survey (LECS) conducted in 1992/93, 1997/98, 2002/03, 2007/08, 2012/13
  - Annual Household Survey (AHS) 2003, 2004, 2005, 2006, 2007, 2009, 2011, 2014, 2015, 2016
  - Economics Censuses EC 2006, 2012
  - Enterprise Survey 2003, 2004, 2005, 2006, 2007, 2015, 2016
- Administrative reporting data
  - Ministry of Agriculture and Forestry
  - Vertical System and etc..

## Data collection and Classification (Cont)

### ○ Classification

- LCPA (Lao Classification of Production on Activities) purpose for Supply and Use Table (SUT)
- ISIC Rev 4 and developed to LSIC as 5 digit
- CPC 2.0

## Census and Survey

### 1. Census: Lao Agricultural Census: First 1998/99 , Second 2010/11 and Third will be conduct 2019

- ▶ The census had three components: Village component: a survey of all villages in the country to collect data from village heads on rural infrastructure and services.
- ▶ Household component: a survey of all private households in Lao PDR to collect basic data on crops and livestock.
- ▶ Sample farm household component: a sample survey of 41,660 farm households to collect detailed data on agricultural activities

## Some typical items included in Agricultural censuses

- ▶ Main purpose of production
- ▶ Area of holding
- ▶ Land use
- ▶ Land tenure
- ▶ Area of each type of temporary crop grown
- ▶ Area of each type of permanent crop
- ▶ Area irrigated
- ▶ Use of fertilizers and pesticides.
- ▶ Use and ownership of farm machinery.
- ▶ Access to credit
- ▶ Number of each type of livestock
- ▶ Age-sex structure of livestock
- ▶ Presence of aquaculture facilities.
- ▶ Farm population by sex and age
- ▶ Work done by farm population.
- ▶ Sex and age of holder (the person who manages the farm)
- ▶ Forestry activities



- Survey : Crop Cutting Survey 2007-2009:3 targets biggest Provinces (Vientiane Capital, Laungphabang and Savanhkhet) and Other Surveys

### Sampling Frame

- The sampling method employed for the rice crop cutting survey is “Two Stage Sampling”. Villages are used as the Primary Sampling Unit (PSU). Farm households in the sample villages are used as the Secondary Sampling Unit (SSU).
- Number of samples and sample allocation: Number of PSUs is 10 villages per district. Number of SSUs is 2 farm households per village,

## Case study on Cost of Production of Major Crops

Year 2009	Corn		Maize		Soybean		Cassava		Sugar Can	
	USD	Share	USD	Share	USD	Share	USD	Share	USD	Share
1. Operating costs:	89.8	93.7%	133.9	96.2%	68.1	96.9%	78.8	97.6%	92.7	95.6%
1.1 Hired labor	65.8	68.6%	63.3	45.5%	34.5	49.1%	63.1	78.0%	70.3	72.5%
1.1.1 Land preparation	24.6	25.7%	29.2	21.0%	15.7	22.4%	21.7	26.8%	15.2	15.7%
1.1.2 Plantation	12.6	13.2%	5.0	3.6%	4.4	6.3%	13.3	16.4%	6.8	7.0%
1.1.3 Protection	9.5	9.9%	20.0	14.4%	5.4	7.7%	9.0	11.1%	15.5	16.0%
1.1.4 Harvesting	19.0	19.8%	9.1	6.5%	8.9	12.7%	19.1	23.7%	32.8	33.9%
1.2 Factor Cost	22.4	23.3%	70.4	50.6%	33.6	47.8%	15.8	19.5%	22.4	23.1%
1.2.1 Seeding	6.1	6.4%	21.8	15.7%	13.8	19.7%	10.1	12.5%	8.1	8.3%
1.2.2 Fertilizer	6.1	6.3%	40.6	29.2%	16.0	22.8%	1.6	1.9%	10.1	10.4%
1.2.3 pesticides	1.6	1.7%	1.1	0.8%	1.3	1.9%	0.2	0.2%	1.8	1.9%
1.2.4 Chemicals	0.4	0.4%	0.5	0.4%	0.1	0.2%	0.1	0.1%	0.7	0.8%
1.2.5 Fuel , lube, and electricity	1.7	1.7%	1.8	1.3%	1.6	2.2%	1.1	1.3%	1.3	1.3%
1.2.6 Tools and equipment	4.6	4.8%	4.0	2.9%	0.5	0.7%	1.7	2.1%	0.4	0.5%
1.2.7 Others (interest/ depreciation)	2.0	2.1%	0.6	0.4%	0.2	0.3%	1.1	1.4%	-	0.0%
1.3 Opportunity Cost of Investment	1.6	1.7%	0.2	0.1%	-	0.0%	-	0.0%	-	0.0%
2. Fixed Capital	6.1	6.3%	5.2	3.8%	2.1	3.1%	2.0	2.4%	4.3	4.4%
2.1 Rental (Land)	5.2	5.4%	4.6	3.3%	1.9	2.7%	1.7	2.1%	4.1	4.2%
2.2 Others	0.9	0.9%	0.6	0.4%	0.2	0.3%	0.3	0.3%	0.2	0.2%
3. Total Cost ( USD / planted Hai)	95.9	100.0%	139.1	100.0%	70.2	100.0%	80.8	100.0%	97.0	100.0%

\* 6 Hai = 1 Hectar



## Issues and Challenges

- Staff shortage, capability in the compilation and data analysis and dissemination Insufficient;
- Availability of agricultural statistics: Mostly production-related
- Accuracy, reliability and timeliness: Need to be improved
- Constraint of budget

## Way Forward

- Enhance staff capacity building
- Developing and Improving sample design , questionnaire of related survey. Will be conduct LECS VI 2018/2019, Economic Census (EC III) in 2018 and Agriculture Census III in 2019
- Raise awareness and dissemination of The Strategy for the Sustainable Development of the National Statistical System 2016-2025 and vision 2030 (SSDNSS) and Strategy for Agricultural and Rural statistics 2016-2025

**Thank You  
Kop Jai**

