

Agricultural and Rural Statistics

Minimum Core set of Data

Timor-Leste

Outline

- ◆ Introduction
- ◆ Timor-Leste Agriculture Situation

Introduction (Cont..)

- Timor-Leste has never been conducted a census of agriculture.
- Timor-Leste is a lack of structural information on the agricultural sector.
- The agricultural statistics system of Timor-Leste based on Timor-Leste Population Census and administrative report.



Timor-Leste Agriculture Situation

AGRICULTURE TRENDS IN TIMOR-LESTE: FROM 2010-2017

Analysis of agricultural data derived from the 2015 Timor-Leste National Population and Housing Census (NPHC) which was conducted 11th - 12th July 2015 and aimed at assessing progress in the agriculture sector since 2010

THE 2015 DATA CAME FROM

1 183 643 people
204 597 households



70% of the population are reported in rural areas
49.2% of the population are women
50.8% of the population are men

KEY AGRICULTURAL HOUSEHOLD DATA

15.5% of 28 500 are female-headed households
89.9% of 183 633 households are engaged in agriculture

84.5% of 155 133 are male-headed households

AGE RANGE OF AGRICULTURAL HOUSEHOLD HEADS ENGAGED IN AGRICULTURE

0.6% younger than 20 years
8.5% 20-29 years
19.4% 30-39 years
25.9% 40-49 years
45.5% 50 years or older

LIVESTOCK

21% more households began raising livestock between 2010 and 2015

Livestock movements in numbers from 2010-2015



87.2% of 178 365 households in Timor-Leste rear livestock

84.7% of livestock rearing households are male headed

15.3% of livestock rearing households are female headed

99.5% of households rear livestock for their own use
98.1% of households rear livestock to sell

CROPPING

40% more households began growing crops in Timor-Leste from 2010 to 2015

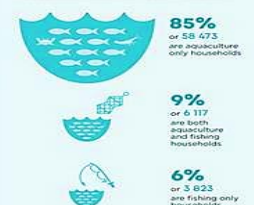
Increases in crop production from 2010-2015



CROPPING LAND BY LAND SIZE



68 413 OR **33%** OF TIMOR-LESTE HOUSEHOLDS ENGAGED IN AQUACULTURE AND FISHING IN 2015



Timor-Leste Agriculture data came from;

- Integrating agriculture questions into National Population and Housing Census (NPHC) – 2004, 2010 & 2015
- The 2004 & 2010 National Population and Housing Census (NPHC) integrated five agriculture questions (frame question), while in the 2015 NPHC, adding 5 questions becoming 10 for measure proportion of households in agricultural production and livestock rearing and improved survey frame and define threshold (crops, livestock & agriculture land) to running 2019 agriculture census.
- For specific need (national account → agriculture sector) in Timor-Leste conducted living standard survey every five year.

Crops Cutting Experiment

- Timor-Leste Conducted crops cutting survey for only administrative report use
- Crops cutting did by extension officer in each village.