



BADAN PUSAT STATISTIK

Institution Report

SIMDIKLAT Activities and E-learning Development Process In Education and Training Centre (ETC)

BPS Statistics Indonesia:

The Rationale of Integrated of E-learning System

By

Munawar Asikin

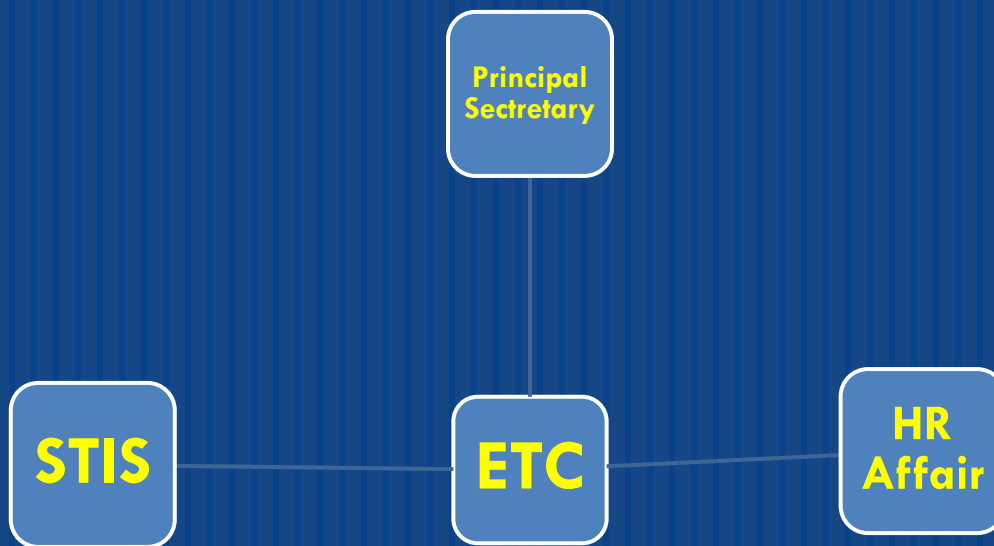
Head of Technical and Functional Training Division

Education and Training Center (ETC)

BPS Statistics Indonesia

**Arranged in order to The Fifth Workshop on Forging Partnerships in Statistical
Training in Asia and the Pacific: Making e-Learning Work for Us, 24-26 June
2013, in Chiba, Japan**

Human Resource: The Three Echelon II



The Institute of Statistics (STIS)

- ✓ Produce 500 undergraduated every year
- ✓ The alumni follow bond program to BPS for at least 9 years
- ✓ They work as statistician/computer administator
- ✓ They can direct to become a functional statistician
- ✓ They worked at all over BPS branch office

ICT Improvement

- ✓ SIPADU since 2009 up to now

Human Resources Affairs

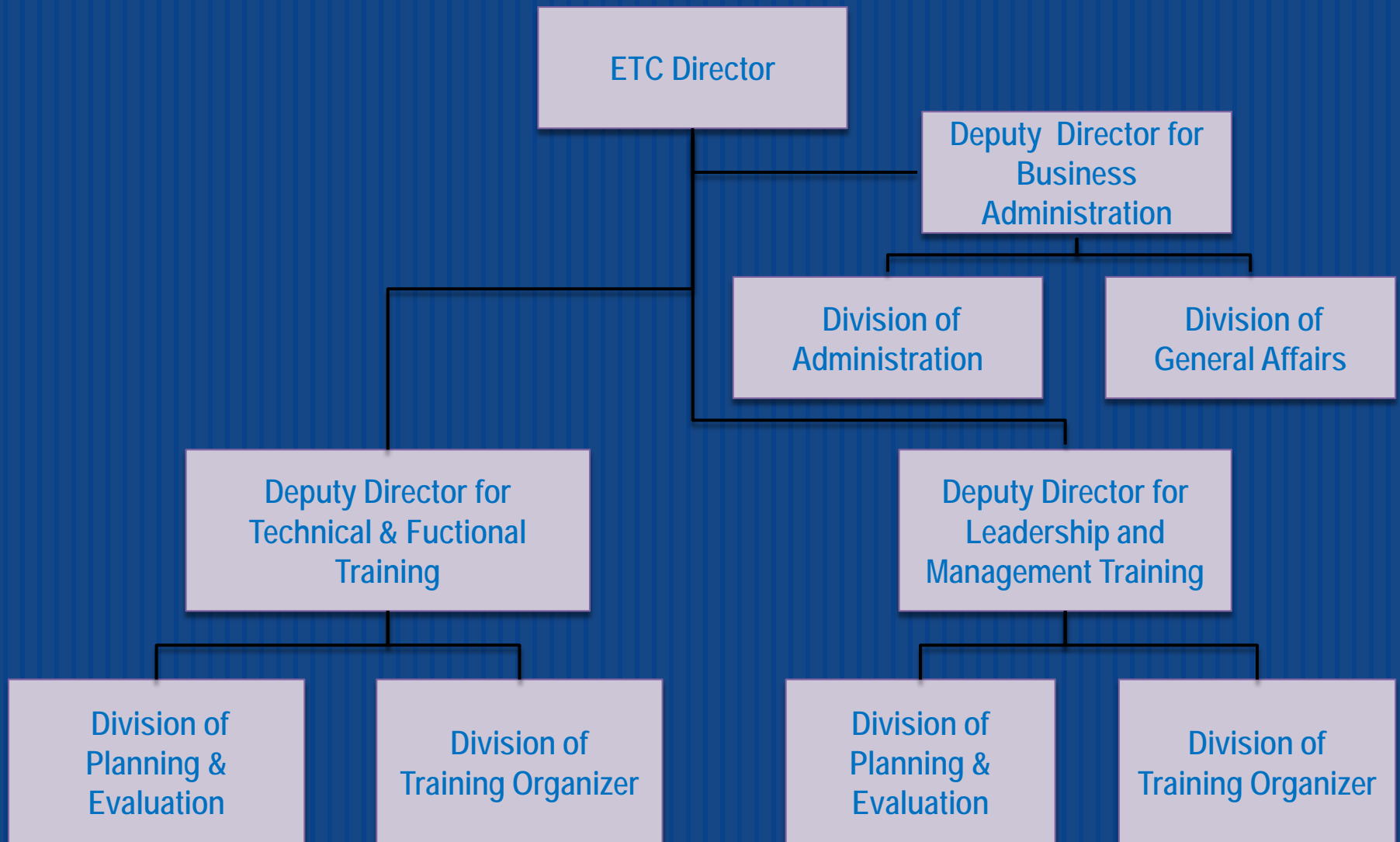
- ✓ Recruitment nsystem for new Gov't Employe
- ✓ Using Web System in 2013
- ✓ Mostly for non statistics staff
- ✓ Evaluation of job title, job grade
- ✓ Put staff into functfional and structural
- ✓ Welfare Status for all (Remuneration)

ICT improvement

- ✓ Recruitment System (web based)

ETC Organizational Structure

3



LEADERSHIP & MANAGEMENT TRAINING DIVISION

- Responsible for conducting Leadership and Management Training, and Induction Training

- Training in Leadership and Management for structural position (level 3 for chief division, chief regency or chief of BPS capital /town, level 4 for chief of section or sub division)
- The curriculum of this training include managerial /hard competency and behavioral /soft competency

- Induction Training for new starter
- The curriculum mostly focus on working culture, code of conduct , work ethic, values, rotation polices, loyalty, achievement, responsibilitu, obedience, honesty, coopertaion, initiative, leadership

□ Responsible for conducting Technical and Functional Training

- A old format for technical subject: KSD, KSM, KSL
- A new format based on Bureaucratic Reform:
- Basic Statistics Distance Learning (BSDL)
- Expert Statistics Distance Learning (ESDL)
- The curriculum of this training most of technical competency a little bit soft competency
- Intended to functional statistician and computer administration
- BSDL since 2009 to 2012
- ESDL since 2012 (to be implemented using E-learning System)

Technical Training:

- Statistics: SNA, Poverty, Labour, Demography, etc
- Information technology: Web design, GIS, etc
- Others: Public Relation, Human Resources, Finance and accounting, procurement, Administration, etc



The 2012 Training Activities

LEADERSHIP AND MANAGEMENT TRAINING

Induction Training

Leadership and Management for Echelon 4 (2 Batch)

Leadership and Management for Echelon 3 (1 Batch)

TECHNICAL TRAINING

- 1 Training on Functional Administration for Human Resources in West Nusa Tenggara
- 2 Training on Functional Administration for Human Resources in BNPB
- 3 Training on GIS Application
- 5 Training on Web Programming with PHP dan MySql
- 4 Training on National Account focusing on Expenditure Approach
- 6 Training on Techniques and Analysis of Social Economic Indicator and Trend of Business

FUNCTIONAL TRAINING

- 1 Training for Computer Specialist (advanced level)
 - 2 Training for Functional Statistician (advanced level) (3 Batch)
-
- 1 Basic Statistical Distance Learning (DSDJJ)
 - 2 Expert Statistical Distance Learning (DSAJJ)



Cooperation Training with Line Ministries

- 1 Computer Specialist Advanced level (Ministry of Energy and Mining)
- 2 Computer Specialist Basic level (Ministry of Finance)
- 3 Computer Specialist Advanced level (Ministry of Finance)
- 4 Computer Specialist Basic level (Ministry of Defense)
- 5 Statistician Advanced level (Ministry of communication and information)
- 6 Computer Specialist Basic level (ministry of transportation) (2 Batch)
- 7 Statistician Basic level (Ministry of transportation)
- 9 Computer Specialist Advanced level (Supreme Court)

Example: Training Activity for Basic Statistics in collaboration with Ministry of Transportation, 2012

Sunday	Monday	Thursday	Wednesday	Thursday	Friday	Saturday
I	15-Oct-12	16-Oct-12	17-Oct-12	18-Oct-12	19-Oct-12	20-Oct-12
			Test for Eva and Adm System	Test for Meaning and Usage of Stat	Test for Math Basic	Test for Data Collection
	Opening Ceremony	Evaluation and Administration System (8 JP)	Meaning and Usage of Statistics	Math Basic	Data Collection	Sampling Methods
	Pengarahan Program					
CHECK IN	PRE-TEST	(Hasan As'ari S.Si., M.E)	(Ridjal Ismail, M.Sc.)	(Firdaus, MBA)	(Srisinto, SE)	(Achmad Prasetyo. S.Si., MM)
	Group Dinamic (TIM PPSDMAP)					
			(12 JP)	(12 JP)	(12 JP)	(12 JP)
II	22-Oct-12	23-Oct-12	24-Oct-12	25-Oct-12	26-Oct-12	27-Oct-12
	Test for Sampling Methods	Test for Data Proc. Technic	Test for Size of Statistics	Test for Presentation of Data		
	Data Processing Technic	Size of Statistics	Presentation of Data	Package Data Processing Program		Package Data Processing Program
II	(Ria Sitanggang, M.Si)	(Ir. Tatang Kamil)	(Sa'adah, M.Si)	(M.Yahya, S.ST) (Ir. Erya Afrianus)	OFF Ied Mubaroq 1433 H	(M.Yahya, S.ST) (Yulianto, S.Si)
	(12 JP)	(12 JP)	(12 JP)	(10 JP)		(10 JP)
III	29-Oct-12	30-Oct-12	31-Oct-12	1-Nov-12	2-Nov-12	3-Nov-12
	Field Trip to			Test for Regressin and Corr Anal.		Test for Time Series Analysis
	Ministry of Transportation or NSO Indonesia	Regression & Correlation Analysis	Regression & Correlation Analysis	Time Series Analysis	Time Series Analysis	Index Numbers
		(Ir. Sri Sayekti M.Sc.) (Jimmy Ludin, M.Si)	(Ir. Sri Sayekti M.Sc.) (Jimmy Ludin, M.Si)	(Daud Eliezar, M.Si) (Ika Virnaristanti, S.Si, M.Si.)	(Daud Eliezar, M.Si) (Ika Virnaristanti, S.Si, M.Si.)	(M. Yulius, SE, MM, M.Sc, MBA.)
		(12 JP)	(12 JP)	(12 JP)	(12 JP)	(12 JP)
IV	5-Nov-12	6-Nov-12	7-Nov-12	8-Nov-12	9-Nov-12	10-Nov-12
	Test for Index Numbers			Test for Tech to Make Doc and Rep.		
	Package Data Processing Program	Package Data Processing Program	Technic to Make Document & Report	Case Study	Case Study	Presentation of Output of Case Study (Working Group)
	(Eko Yulian, S.Si) (Erwin Tanur, M.Si)	(Eko Yulian, S.Si) (Erwin Tanur, M.Si)	(Hasan As'ari S.Si., M.E) (Ir. Erya Afrianus)	(Munawar Asikin, M.S.E) (Syarif Hidayat, M.Si)	(Munawar Asikin, M.S.E) (Syarif Hidayat, M.Si)	(2 Presenter) (One Moderator)
	(10 JP)	(10 JP)	(12 JP)	(12 JP)	(12 JP)	Revision
III	12-Nov-12	13-Nov-12	14-Nov-12	15-Nov-12	16-Nov-12	17-Nov-12
	POST TEST (1)					
	Comprehensif Exams (3)					
	Evaluation					
	Closing Ceremony					
	CHECK OUT					



Training Plan based on Requirement

- Statistics methodology and general tools, including: standards, classifications, and consistency versus relevance in measures
- Survey design, sampling, estimation from samples, non-response, total survey error
- Survey management knowledge and tools
- Time series analysis and seasonal adjustment
- QA materials and tools
- Statistical analysis techniques
- Overview of macro-economic concepts and statistics
- National Accounts concepts and methods
- Field work practice
- Data and Metadata Management
- Data Warehouse (DWH)
- Computer aided survey, concepts and methods
- The use of GIS (Geographic Information System) to communicate survey results
- Basic computer and productivity tools (word processing, sheet, etc.)
- BPS' code of ethics
- Knowing and communicating with your respondents

EXPERIENCE IN INTERNATIONAL TRAINING

- Small Area Statistics
- Regional Course On Poverty Measurements (UNSIAP)
2005 – 2009
- Country Course on Demographic Statistics (UNSIAP)
2009
- Training Program for Officers of Dept. of Census &
Statistics Sri Lanka
2010

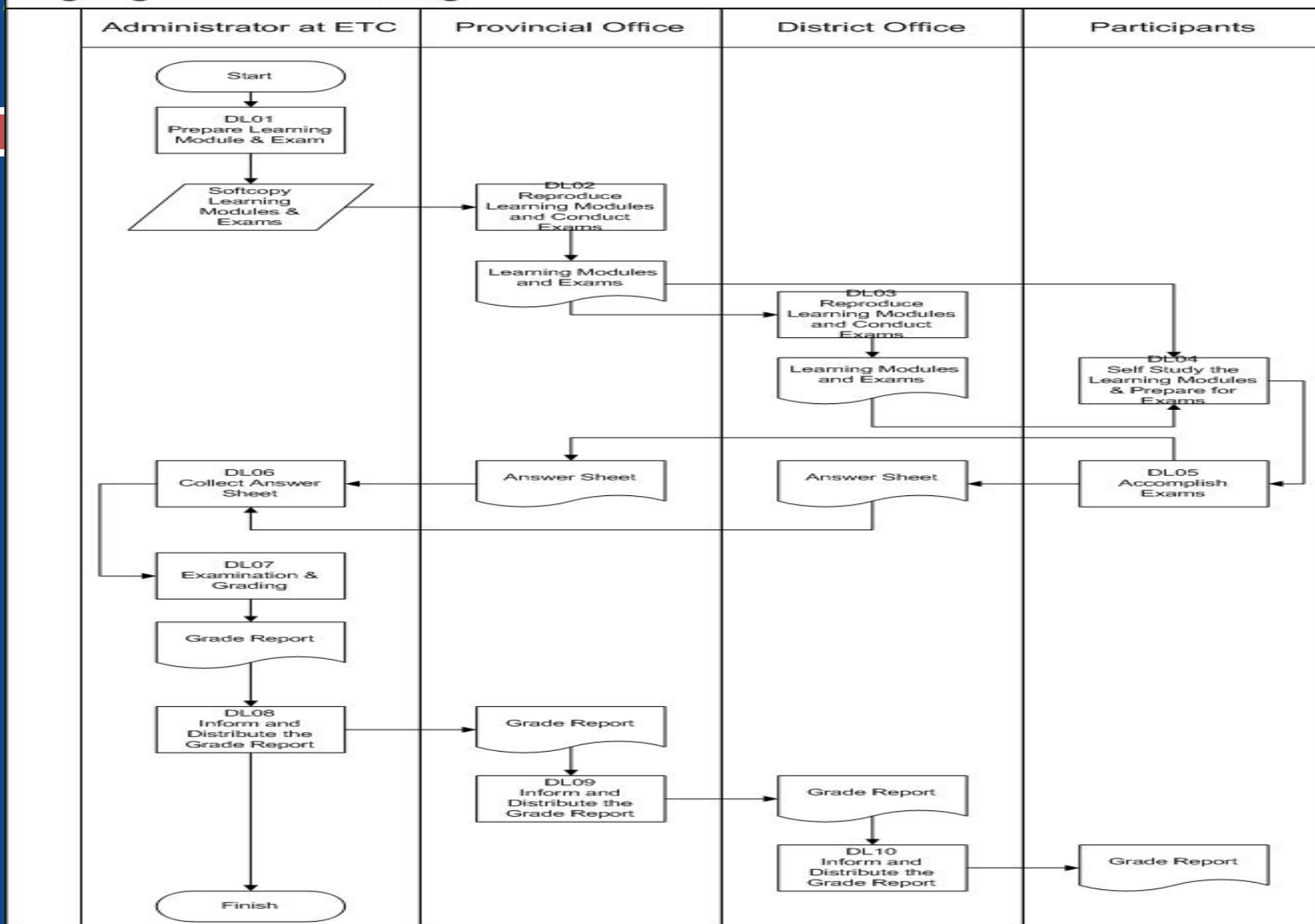
The Schedule of ESDL 2012: Old passion

- ❑ Preparation : January-March 2012
- ❑ Expert Distance Learning Activity (ESDL):
- ❑ Learning with Tutor: Mei – August 2012
- ❑ Making Individual Paper: June – August 2012
- ❑ Attending Comprehensive Test at Provincial only:
- ❑ 27 Nov 2012: 6 subject
- ❑ 28 Nov 2012: 5 subject
- ❑ Sending Individual Working Paper:
- ❑ Evaluation in ETC
- ❑ Video Conference (with 33 BPS Head Office) to inform the Evaluation

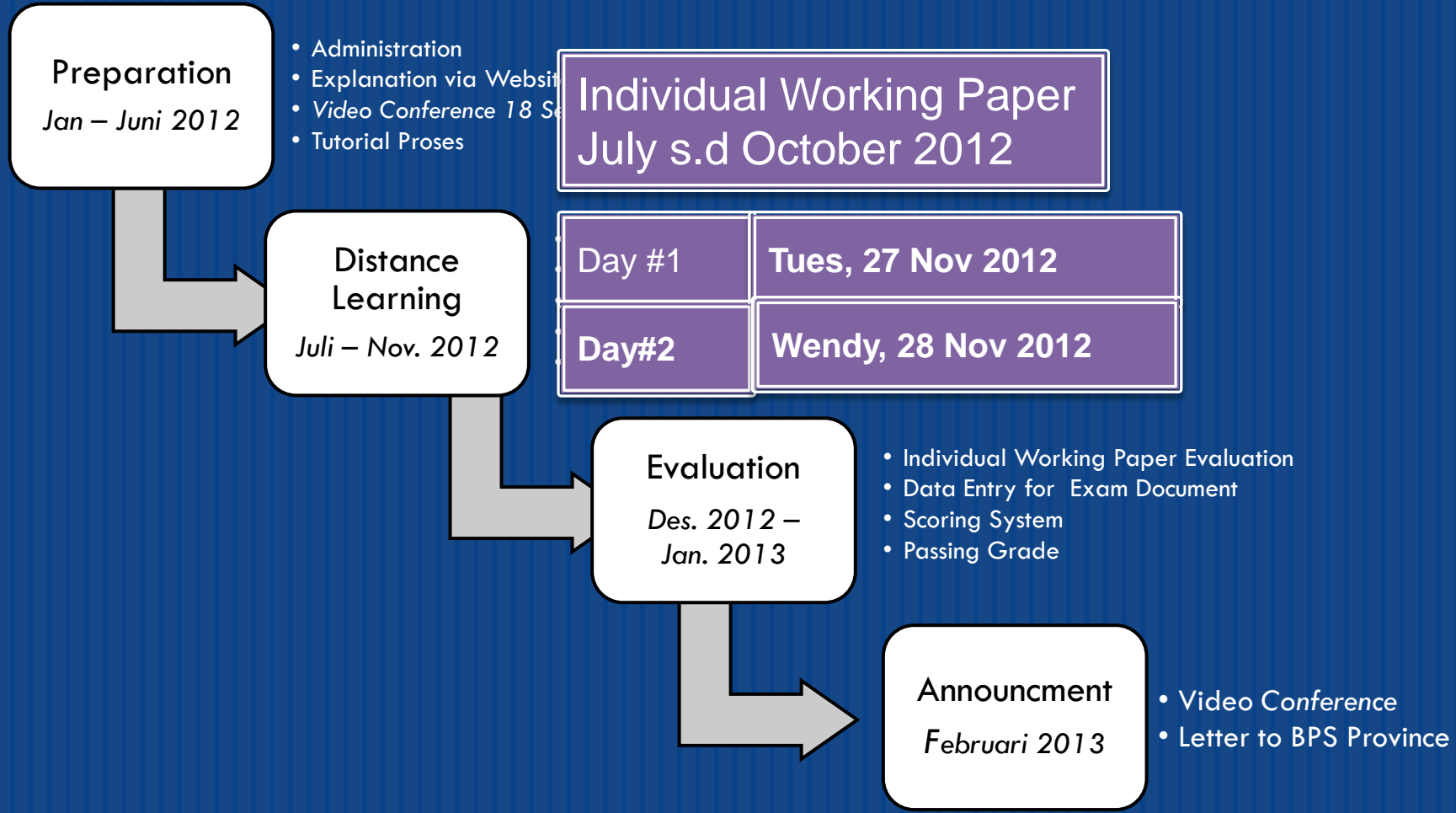
- ❑

Teacher Evaluation

- ❑ Evaluation of the implementation developed using a format by Institute of Public Administration
- ❑ Elements of assessment :
 - ❑ 1. Delivery of content
 - ❑ 2. Insights about the presented material
 - ❑ 3. Systematic presentation
 - ❑ 4. Suitability of the material presented by modul
 - ❑ 5. Mastery learning methods
 - ❑ 6. Mastery of teaching aids
 - ❑ 7. Ability to motivate participants
 - ❑ 8. Ability to transfer knowledge
 - ❑ 9. Punctuality and attendance,
 - ❑ 10. Teachers's language , attitude and appearance.

Ongoing Distance Learning


Expert Statistic Distance Learning 2012: The First Experience with 1.300 participants around province/district



ESDL Test : 6 subject #1 and 5 subject #2

Day #1	Tues, 27 Nov 2012
. Research Metodology (25 Q's)	
Probability (25 Q's)	
Sampling Method (25 Q's)	
Testing of Hypotesis (25 Q's)	
Data Exploration (25 Q's)	
An. Regression/Corr (25 Q's).	

Day#2	Wendy, 28 Nov 2012
Non Parametrich Stat. (25 Q's)	
Index Numbers (25 Q's)	
Time Series Analysis (25 Q's)	
System of Adm & Eva (25 Q's)	
Making a Doc. & Report (25 Q's)	

- 33 supervisors only (budget constraint we need 347)
- Only in provinces, those not attend to province: FAIL
- Close book with tables Z/F/t for Testing Hypothesis only
- Only 3 hours for Day 1
- Only 2,5 hours for Day 2
- No question/No revision for the all question to be tested

METHODOLGY OF EVALUATION INDIVIDUAL WORKING PAPER

Individual Working Paper
July s.d October 2012

1.300 Individual
Working Paper
were check

- Use Standard Question
- Entri The Question

Scoring

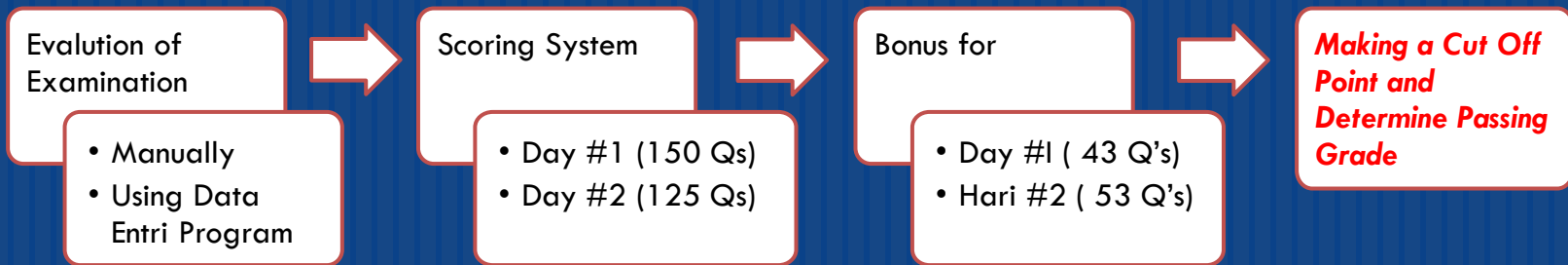
- Total score variabel = 47

Cut Off Point and
Passing Grade

- Every WI/teacher have 50 paper to be evaluated
- WI/teacher filled a standardized question
- WI/teacher entry the filled question
- They should give information of the content of IWP
- Give suggestion about the ESDL's student (fail or not based on IWP)

METHODOLOGY OF EVALUATION COMPREHENSIF EXAMS

Evaluatation Prochedure



Criteria

Those whose total score ≥ 53 point is assigned as PASS, others FAIL

Recap of Participants of Expert Statistic Distance Learning 2012					
No.	Province Name	No of Participants	Success	Fail	Percentage of Graduation
(1)	(2)	(3)	(4)	(5)	(6)
00	BPS Pusat	16	13	3	81.25
11	Aceh	53	46	7	86.79
12	Sumatera Utara	31	21	10	67.74
13	Sumatera Barat	38	34	4	89.47
14	Riau	26	24	2	92.31
15	Jambi	28	28	0	100.00
16	Sumatera selatan	52	52	0	100.00
17	Bengkulu	46	44	2	95.65
18	Lampung	54	46	8	85.19
21	Bangka Belitung	14	10	4	71.43
22	Kep. Riau	9	9	0	100.00
31	DKI Jakarta	5	3	2	60.00
32	Jawa Barat	66	50	16	75.76
33	Jawa Tengah	64	48	16	75.00
34	DI Yogyakarta	18	16	2	88.89
35	Jawa Timur	164	152	12	92.68
36	Banten	12	11	1	91.67
51	Bali	51	44	7	86.27
52	N T B	24	20	4	83.33
53	N T T	80	66	14	82.50
61	Kalimantan Barat	25	24	1	96.00
62	Kalimantan Tengah	25	22	3	88.00
63	Kalimantan Selatan	13	13	0	100.00
64	Kalimantan Timur	11	10	1	90.91
71	Sulawesi Utara	31	25	6	80.65
72	Sulawesi Tengah	34	20	14	58.82
73	Sulawesi Selatan	112	93	19	83.04
74	Sulawesi Tenggara	21	18	3	85.71
75	Sulawesi Barat	29	22	7	75.86
76	Gorontalo	2	2	0	100.00
81	Maluku	8	7	1	87.50
82	Maluku Utara	28	22	6	78.57
91	Papua	61	44	17	72.13
92	Papua Barat	55	35	20	63.64
	Total	1,306	1,094	212	83.77

THE CURRENT SYSTEM OF ESDL: CHALLENGES

- ❑ The activity depend on telephone, email, and send a letter to province office.
- ❑ All participants' data are key in in excell format
- ❑ Still file based not database
- ❑ Not easy to manage (33 prov, 470 district, 1 300 participants)
- ❑ Data redudancy can be occur
- ❑ Lost problem
- ❑ Not accurate when analyze

E-Lerning System is a MUST

SIMDIKLAT AND E-LEARNING SYSTEM

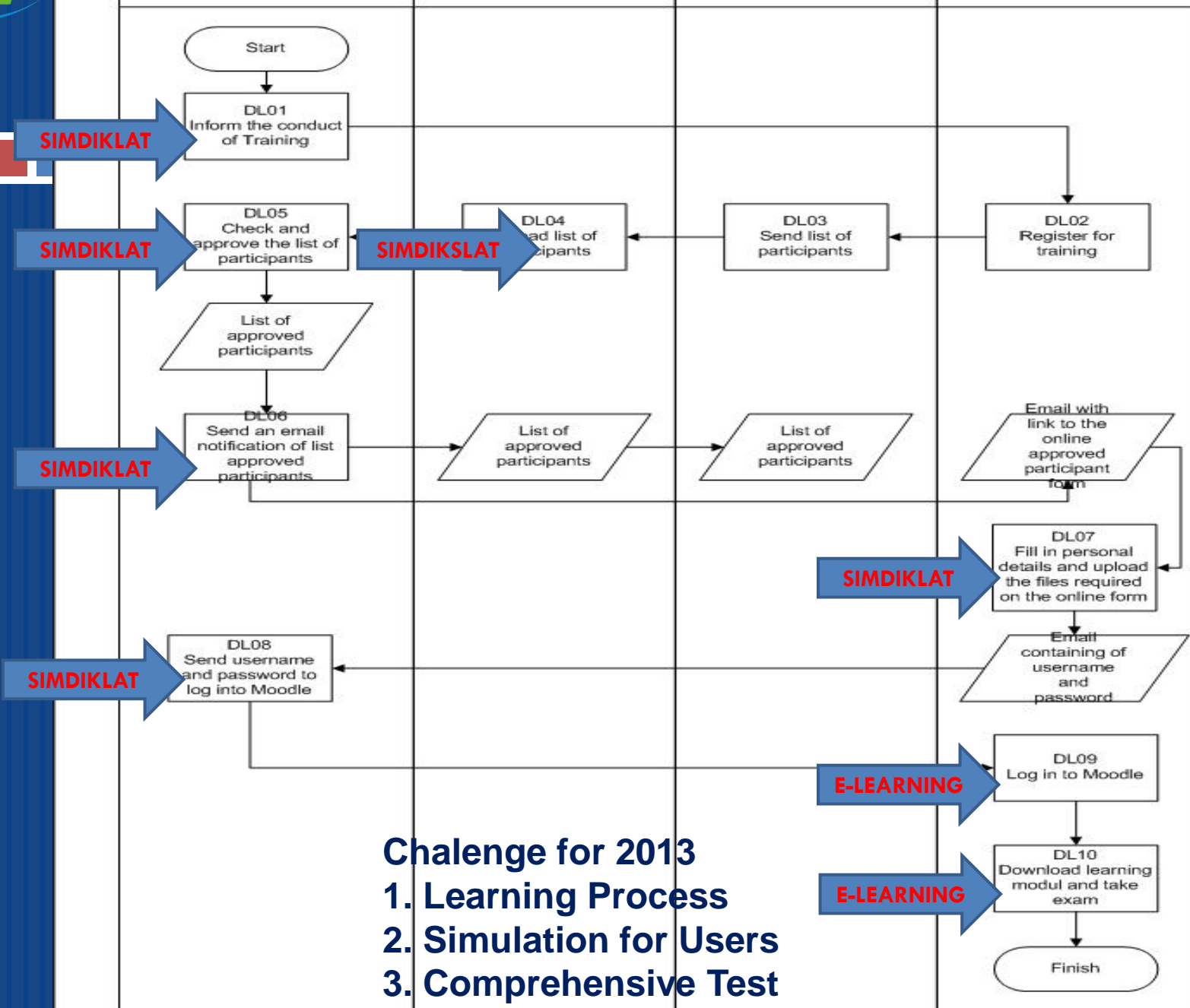
- ❑ An Automisation of all ETC activities to strengthen the all aspect of works in different division in integrated manner using Manajemen System for Education and Training (SIMDIKLAT).
- ❑ URL: <http://pusdiklat.bps.go.id/>
- ❑ LINK: <http://simdiklat.bps.go.id/>
- ❑ E-Learning process implementation change considerably all manual process in the last experience of Distance Learning
- ❑ LINK: <http://pusdiklat.bps.go.id/v-class/>
- ❑ LOCAL HOST: <http://localhost/moodle/>
- ❑ **The combination : The Integrated of E-learning System**

Preparation of Learning Module

- E-learning development activity begins at its meeting on February 5, 2013, in a meeting conducted to review the distance learning system that has been done so far.
- Preparation of E-Learning material is supported by 17 alumni STIS (force 50) interns since 3 February 2013 at the ETC until they are dispatched to the BPS Branch offices. List the name of the team members can be seen in Appendix 12.
- There are three main activities in the Development of Learning Module For E-Learning for ESDL namely (1) the manufacture of power point, (2) the manufacture of modules for video narration of ESDL material, and (3) making video material.
- Completion of the manufacture of modules for video narration of ESDL material has reached 90% (10 of 11 material), while making video material of ESDL also has reached 90% (10 of 11 material).



Administrator at ETC Provincial Office District Office Participants



SIMDIKLAT

SIMDIKLAT

SIMDIKLAT

SIMDIKLAT

SIMDIKLAT

E-LEARNING

E-LEARNING

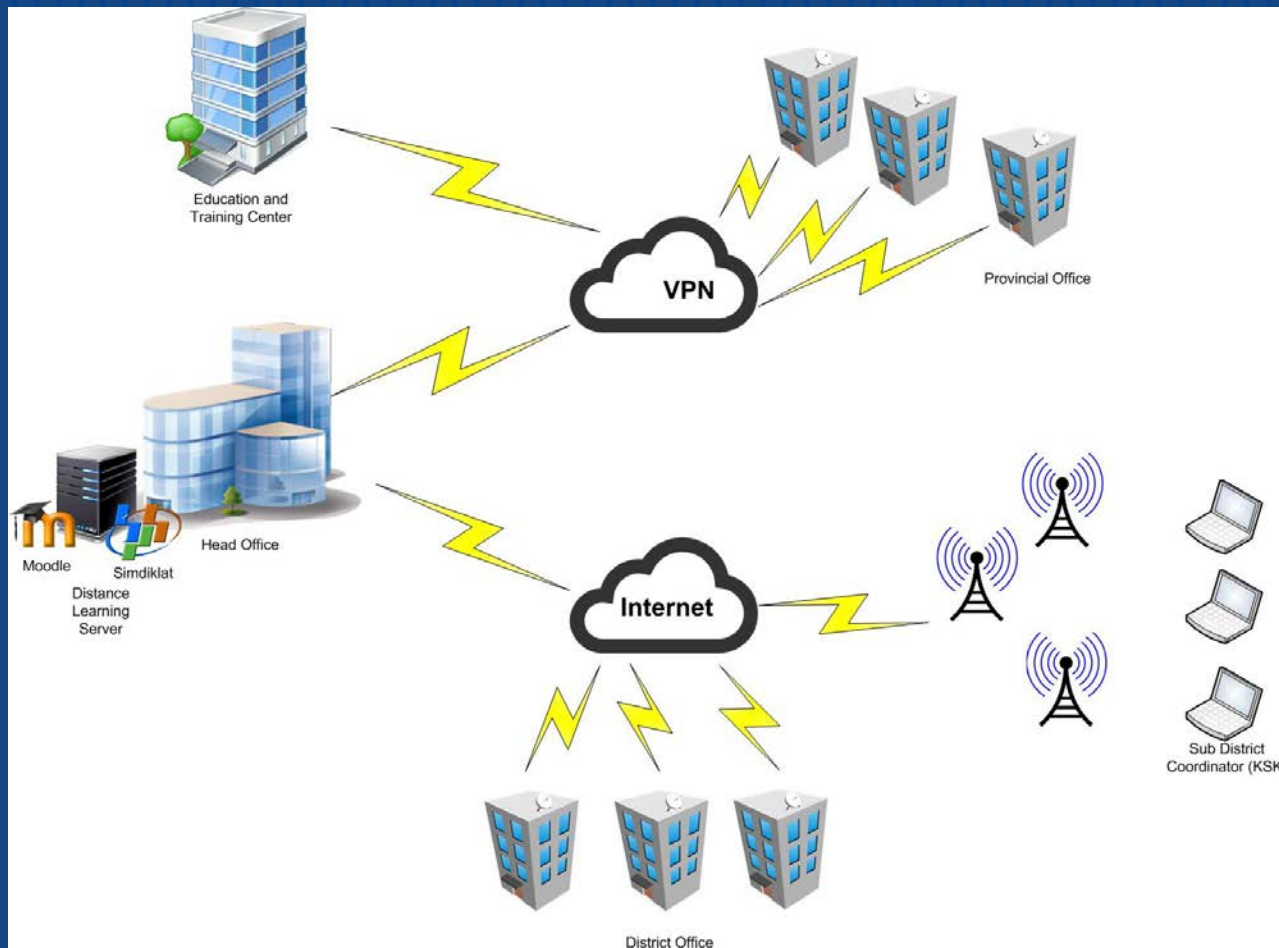
Challenge for 2013
1. Learning Process
2. Simulation for Users
3. Comprehensive Test

Preparation of E-learning System

- Preparation of E-learning for ESDL started in January 2013, preceded by some Claroline and Moodle training activities organized by BDTF
 1. Clarolne Training for Staff Training Centre on 10 and 17 January 2013.
 2. Claroline training for lecturer on February 22, 2013 with the number of 12 participants.
 3. Moodle training with five Team Member E-learning on June 3, 2013.

➤ Trial for Test Comprehensive of E-Learning has been done for evaluation on 17 and 19 June 2013

The Architecture of The Int. ELearning



Software Used

- ❑ 1. Microsoft Power Point
- ❑ 2. VLC Media Player and Windows Media Player
- ❑ 3. Xampp, PhpMyAdmin, HTML, JAVA, PHP, Notepad + +
- ❑ 4. Moodle/Claroline

SOME SCREEN SHOOT

**Of Test Comprehensive of
E-learning System
to be implemented on Juli 2013
(moodle version)**



E-Learning Pusdiklat Badan Pusat Statistik

Main menu

- Site News
- Forum
- Chatting

Course categories

- Statistisi
- Pranata Komputer
- Teknis
- [All courses ...](#)

Navigation

- Home
- Site News
- Forum
- Chatting
- Courses

Site News

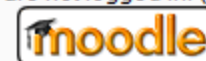


Open Message

by [Admin User](#) - Monday, 17 June 2013, 12:27 PM

Selamat Datang di Media Pembelajaran E-Learning Pusdiklat BPS RI. E-Learning ini dibuat dalam rangka mendukung p...
BPS yang akan menempuh jenjang jabatan fungsional statistisi dan pranata komputer.

You are not logged in. ([Login](#))





E-Learning Pusdiklat Badan Pusat Statistik

[Home](#) ► [Login to the site](#)

Returning to this web site?

Login here using your username and password
(Cookies must be enabled in your browser) ?

Username

Password

Login

Remember username

[Forgotten your username or password?](#)

Some courses may allow guest access

Login as a guest

You are not logged in.

[Home](#)



E-Learning Pusdiklat Badan Pusat Statistik

- Main menu**
- Site News
 - Forum
 - Chatting

- My courses**
- Administrasi Jabatan Fungsional Statistisi
 - Analisis Deret Berkala
 - Analisis Korelasi dan Regresi
 - Angka Indeks
 - Eksplorasi Data
 - Metode Sampling
 - Metodologi Penelitian
 - Non Parametrik
 - Paket Program Pengolahan Data Statistik
 - Pengujian Hipotesis
 - Probabilita
 - Sistem Penilaian dan Pembuatan Dokumentasi
 - All courses ...

Site News



Open Message

by [Admin User](#) - Monday, 17 June 2013, 12:27 PM

Selamat Datang di Media Pembelajaran E-Learning Pusdiklat BPS RI. E-Learning ini dibuat dalam rangka mendukung pe SDM BPS yang akan menempuh jenjang jabatan fungsional statistisi dan pranata komputer.

[Discu](#)



Administrasi Jabatan Fungsional Statistisi

[Home](#) ► [My courses](#) ► [Statistisi](#) ► [Statistisi Ahli](#) ► [Adm Jafung Statistisi](#)

Navigation

Home

- My home
- Site pages
- My profile
- Current course
 - Adm Jafung Statistisi**
 - Participants
 - Badges
 - General
 - 20 June - 26 June
 - 27 June - 3 July
 - 4 July - 10 July
 - 11 July - 17 July
 - 18 July - 24 July
 - 25 July - 31 July
 - 1 August - 7 August
 - 8 August - 14 August
 - 15 August - 21 August

 [News forum](#)

 [Slide Adm](#)

 [video bab 1](#)

 [video bab 2](#)

 [video bab 3](#)

 [video bab 4](#)

 [Module](#)

20 June - 26 June

27 June - 3 July

4 July - 10 July

11 July - 17 July

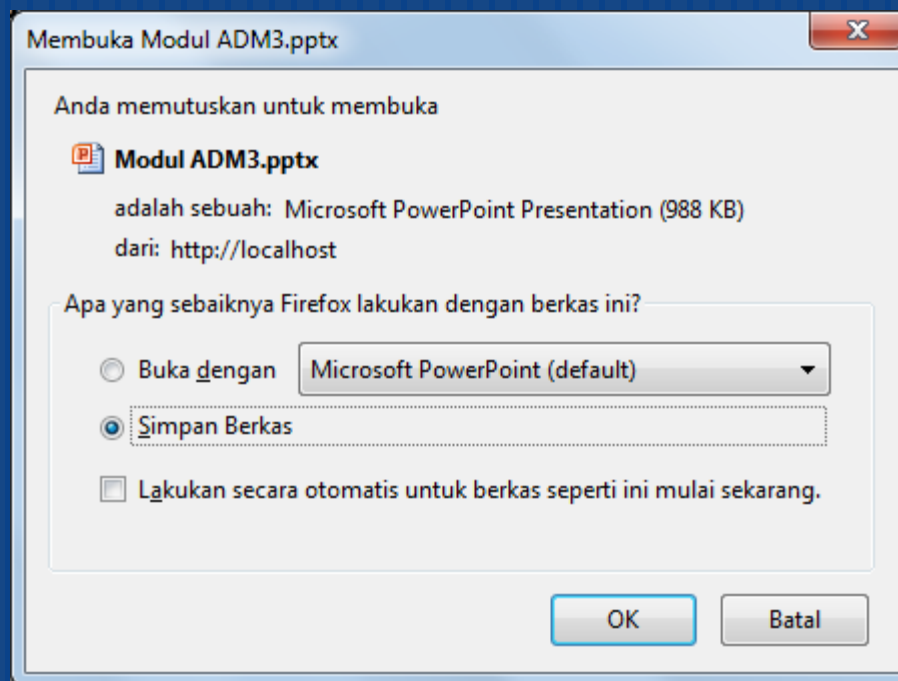
18 July - 24 July

25 July - 31 July

1 August - 7 August

Expert Statistics in E-learning System

- Students can download the module easily





Administrasi Jabatan Fungsional Statistisi

[Home](#) ► [My courses](#) ► [Statistisi](#) ► [Statistisi Ahli](#) ► [Adm Jafung Statistisi](#) ► [General](#) ► [video bab 1](#)

Navigation

Home

- My home
- Site pages
- My profile
- Current course
 - Adm Jafung Statistisi
 - Participants
 - Badges
 - General
 - News forum
 - Slide Adm
 - video bab 1**
 - video bab 2
 - video bab 3
 - video bab 4
 - Module
 - 20 June - 26 June
 - 27 June - 3 July
 - 4 July - 10 July
 - 11 July - 17 July



video bab 1

Beberapa plugin yang digunakan pada laman ini telah usang.



Non Parametrik

[Home](#) ► [My courses](#) ► [Statistisi](#) ► [Statistisi Ahli](#) ► [Non Parametrik](#) ► [General](#) ► [Module](#)

Navigation

Home

- [My home](#)
- [Site pages](#)
- [My profile](#)

Current course

Non Parametrik

- [Participants](#)
- [Badges](#)
- ▼ [General](#)
 - [News forum](#)
 - [Slide NonPar](#)
 - [Pendahuluan](#)
 - [Satu Sampel](#)
 - [Dua sampel berpasangan](#)
 - [Dua sampel independen](#)
 - [K sampel berpasangan](#)
 - [K sampel independen](#)
 - [Normalitas](#)

1.2 General Guidelines for Selecting Non-Parametric M

1.3 Determining the Sample Size.....

Chapter 2 Small Sample Test

2.1 The Binomial Test.....

2.2 Pearson Chi Square for a Large Sample

Chapter 3 Comparative Test Two Sample

3.1 Comparative Test Two Paired Sample.....

3.1.1 Large Sample *Mc Nemar Test*.....

3.1.2 Sign Test

CLOSING

- 1. Preparation for learning with media E-learning has been conducted since 2012.
- 2. It begun with the development if SIMDIKLAT involving the Institute of Statistics (STIS) and Directorate of Statistics Information Systems.
-
- 3. E-learning trials have been run and the conclusion is the system is running well.
- 4. Preparation of E-learning instructional media for remote education and training better in BPS will be implemented on Expert Training for Statisticians in July to September 2013. The number of participants included 1,281 participants spread across 351 districts/cities, with a composition of 818 men and 463 women.

□ THANK YOU
□ VERY MUCH
□ FOR
□ YOU KIND ATTENTION