



Effective leading and managing successful engagement with key stakeholder

SURYAMIN

Chief Statistician bps
Email: suryamin@bps.go.id

*12 th Management Seminar for Heads of NSO in
Asia & the Pacific
UN University, Tokyo, Japan, 3 December 2015*

1



Outline

- About BPS-Statistics Indonesia
- BPS relationship with stakeholder
- BPS' Change and Reform

2



Vision:
The Agent of Trustworthy Statistical Data for All

ABOUT BPS

MISSION 2015 – 2019

1. Providing quality statistical data through integrated statistical activities using national and international standards
2. Strengthening the National Statistical System through sustainable development and coordination in the field of statistics
3. Building professional, high integrity, and trustworthy statisticians for the development of statistics.

GOAL

1. Improving the quality of statistical data through the quality assurance framework
2. Increasing the excellent service of statistical results
3. Strengthening the National Statistical System through effective coordination and guidance in the field of statistics
4. Increased accountability



Producer of official statistics

One of main input-contributors for government/policy makers, private, university, international institution, others

Independency on producing and disseminating statistics



Producer of Official Statistics



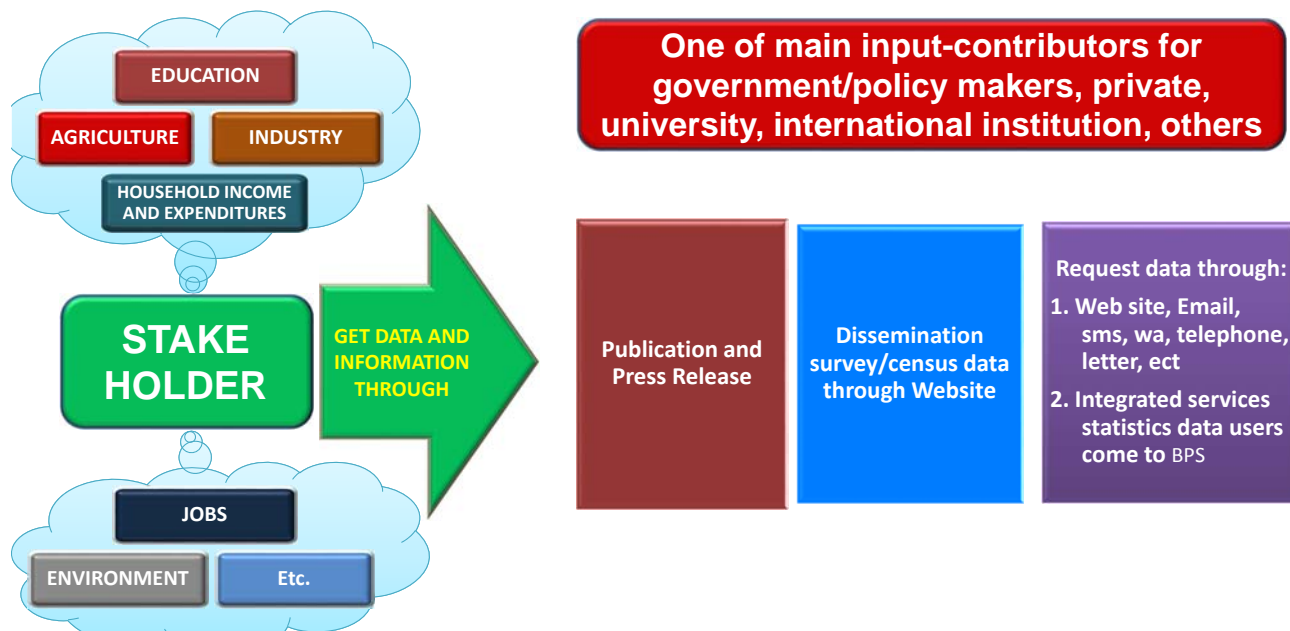
SOCIAL AND POPULATION
 Climate, Consumption and Expenditure, Education, Employment, Environmental, Gender, Geography, Government, Health, Housing, Human Development Indices, Population, Poverty, Social & Culture, Social Resilience, Rural Potential

ECONOMIC AND TRADE
 Business & Consumer Tendency Index, Communication, Construction, Consumer Prices Indices, Energy, Farmer Terms of Trade, Flow of Funds, Foreign Trade, Gross Domestic Product (Expenditure), Gross Domestic Product (Industrial Origin), Gross Regional Domestic Products, Input output, Labour Wages, Large and Medium Manufacturing, Micro and Small Manufacturing, Producer Price Indices, Public Finance, Retail, Small-Scale & Micro Establishment, Social Accounting Matrix, Tourism, Transportation, Wholesale Price Indices

AGRICULTURE AND MINING
 Animal Husbandry, Fishery, Food Crops, Forestry, Horticulture, Mining, Plantation

ABOUT BPS





BPS relationship with statkeholder



Main relationship activities with stakeholders

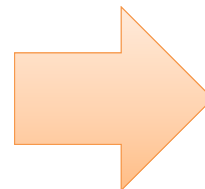
- Prior to the implementation of the census/survey, BPS always invite stakeholders to discuss the concept definitions, scope, methodology
- During the implementation of the census/survey BPS also invites stakeholders to supervise and oversee activities in the field
- Give technical assistance: sampling frame, methodology, interpretation and analysis data

7



BPS supply data to stakeholders

- Development Planning Meeting
- Cabinet meeting
- Close meeting
- Coordinator minister
- Line ministers
- University
- Researcher
- Association of private company
- Media
- General publics



There must be communication and contribution of stakeholders of statistical activities

Stakeholder Use fully the BPS data

8



No	Title	Jan	Feb	Mar	Apr	May	Jun	Jul	Aug	Sep	Oct	Nov	Dec
1	Inflation/Consumer Price Index	02	02	02	01	04	01	01	03	01	01	02	01
2	Indonesian Exports and Imports	02	16	16	15	15	15	15	18	15	15	16	15
3	Indonesian Exports and Imports	02	02	16	15	15	15	15	18	15	15	16	15
4	Tourism and Transportation	02	02	02	01	04	01	01	03	01	01	02	01
5	The Farmer Terms of Trade, Producer Prices of Unhusked Rice and Labor Wage	02	02	02	01	04	01	01	03	01	01	02	01
6	Indonesia's Economic Growth (Gross Domestic Product)	05				05			05			05	
7	Business Tendency Index and Consumer Tendency Index	05				05			05			05	
8	Rice, Maize, and Soybean Production			02				01				02	
9	Indonesian Labor					05						05	
10	Large and Medium Manufacturing Industry												
11	Small Manufacturing Industry												
12	The Wholesale Trade Price Index	02	02	02	01	04	01	01	03	01	01	02	01
13	Profile of Poverty in Indonesia	02										15	
14	Anti-Corruption Index	02											

- a. Chief statistician release data in the press conference independently in front more than 100 reporters from electronic and non electronic media
- b. Disseminate/send all data to line ministries



9



Special meeting with Parliament (hearing)

- **Determination of macroeconomic assumptions such as**
 - economic growth
 - Inflation
- **Development targets such as**
 - Level of poverty
 - Unemployment
 - Human development index
 - Gini ratio



Meetings conducted jointly Finance Minister, Central Bank, Minister of planning and national development and other relevant Ministers

10



One of main contributors in plenary cabinet, parliament, and coordinating minister meetings

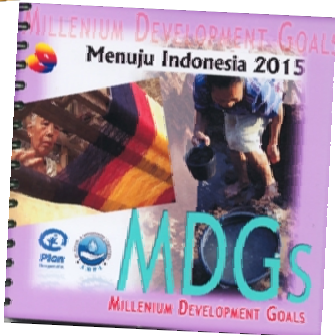
Closed Meeting

Plenary Cabinet Meeting



1. Provide an understanding of data related to the phenomena

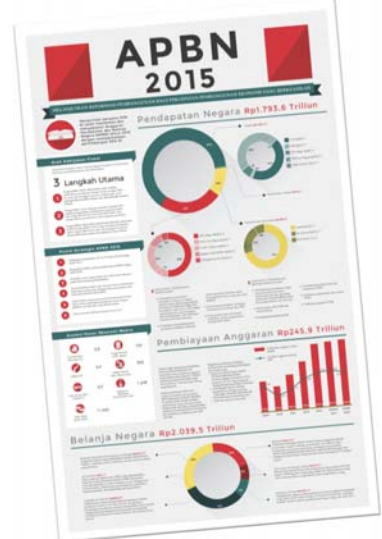
2. Explain the methodology, scope and quality of data, NOT study or analysis of data



Main contributor for the national development report



ABOUT BPS





THE STRENGTHS

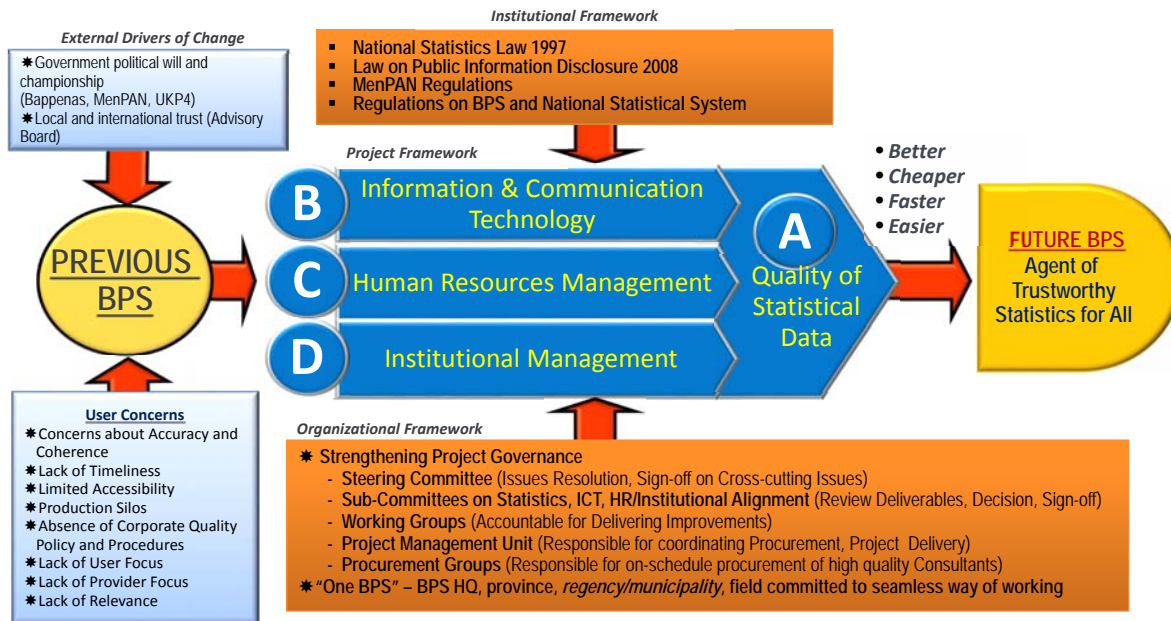
- BPS as coordinating body in Indonesian Statistical System (Law No.16 1997)
- Offices in head quarter, 33 provinces and 511 regencies/municipalities
- 16,000 employees with increasing level of skill and education
- Relatively modern ICT infrastructure
- The vertical system
- Has Institute of Statistics (STIS) that can supply 400 Bachelor of statistics every year to strengthen HR and replace retired

13

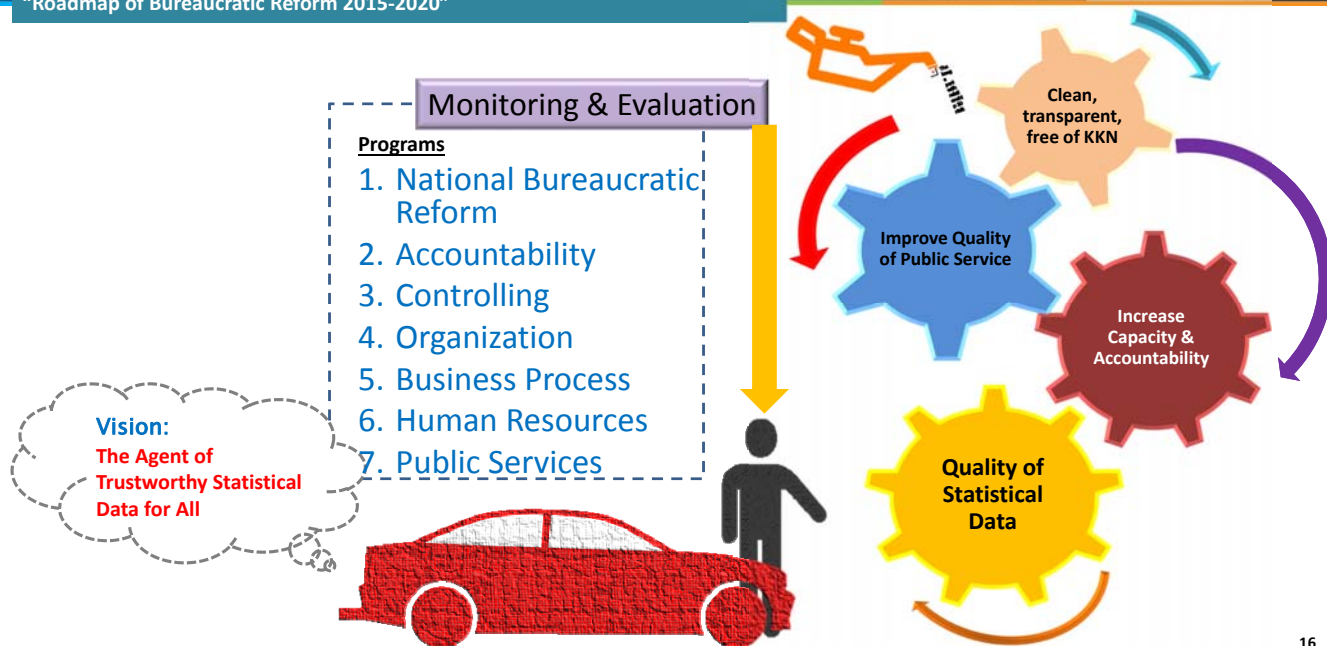


BPS' Change and Reform

14



Objectives of bureaucratic reform:
Ministry of Administrative and Bureaucratic Reform's Regulation No. 11/2015:
"Roadmap of Bureaucratic Reform 2015-2020"





International Stakeholders



How do we build relationships, communication, socialization and cooperation with stakeholders



Project Development Objectives (PDO)

The development objective of the Statistical Capacity Building-Change and Reform for the Development of Statistics (STATCAP-CERDAS) Project is to increase the effectiveness and efficiency of the Indonesian National Statistics Office (BPS-Statistics Indonesia) to produce and disseminate reliable and timely statistics in accordance with international standards and best practices, and to be responsive to user needs.

Thank You

www.bps.go.id

- **Badan Pusat Statistik Republik Indonesia (Statistics Indonesia)**
Jl. Dr. Sutomo 6-8 Jakarta 10710 Indonesia
- Phone: (62-21) 3841195, 3842508, 3810291
- Fax:(62-21) 3857046
- E-Mailbox : bpsHQ@bps.go.id

Copyright © November, 2015. Badan Pusat Statistik Republik Indonesia
All Rights Reserved

