



BPS-STATISTICS INDONESIA

Implementation of The 2008 SNA in Indonesia

- Supply and Use Tables
- Sectoral Account and Balance Sheets



Presented in Webinar on 2008 SNA Implementation

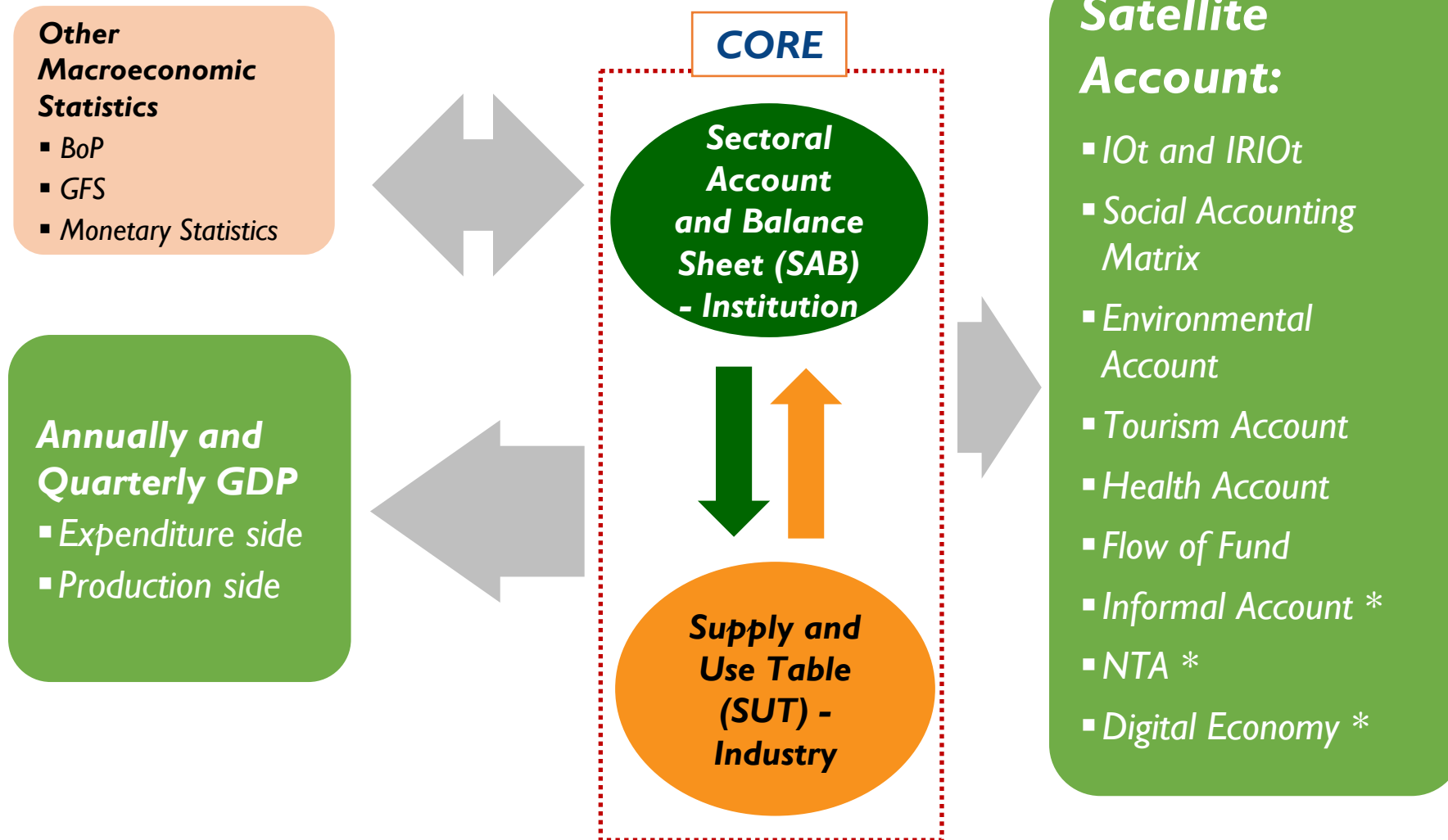


Thursday, 23rd February 2023





Framework of National Account

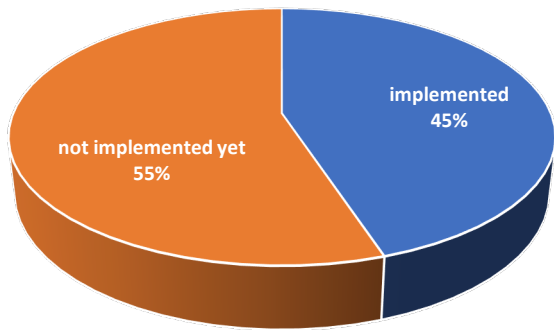




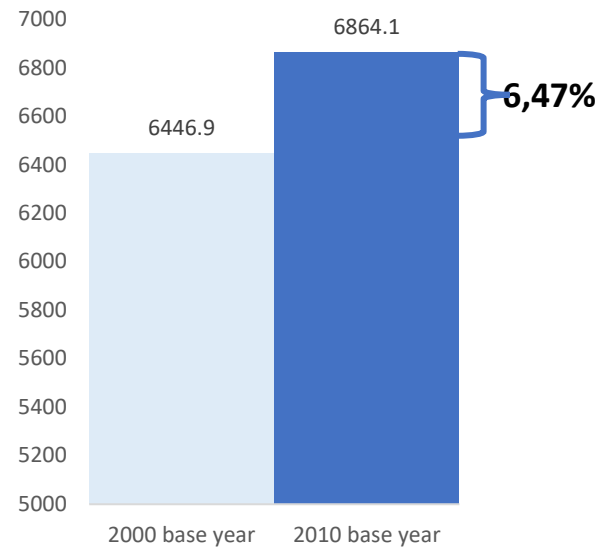
General Implementation

Due to the impact of the 2008 SNA Implementation....

From 118 changes in 2008 SNA.....



and still improved....



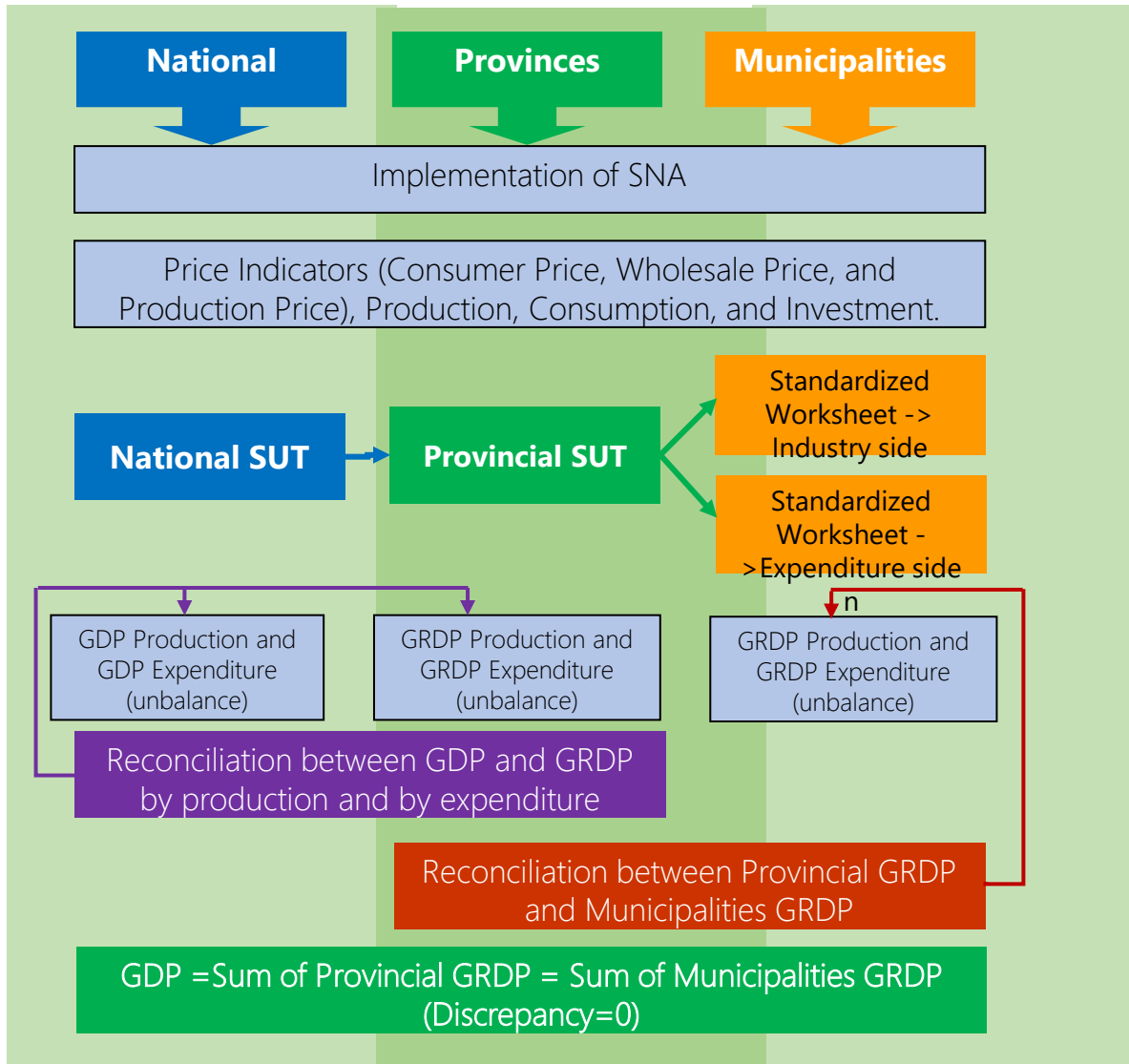
Type of Revision	Implication to Indonesia's GDP
1. Output of Agriculture	Increase GDP by 1.90%
2. Expenditure on mineral exploration and evaluation	Increase GDP by 0.34%
3. Expenditure on entertainment and artistic original products	Increase GDP by 0.10%
4. Expenditure on software and databases production	Increase GDP by 0.05%
5. Expenditure on license (copy right)	Increase GDP by 0.25%
6. Changes in the method of calculating bank output from IBSC to FISIM	Decrease GDP by 0.29%
7. Allocation of Central Bank output to final consumption	Increase GDP by 0.07%
Total	Increase GDP: 2.42%



Time lag of quarterly and annual GDP/GRDP:
35 days



SUT's Work Flow



TARGET OF REBASING GDP/GRDP

Year	National SUT	Provincial SUT
2015 2020	SUT 2010 (Rebasing 2010=100 & I-O):81x244 SUT 2016 (I-O & IRIO) 212x262	
2021- 2022 2022 2023	SUT 2019 (Current Price & Previous Year Price) SUT 2020 (Current Price & Previous Year Price) SUT 2021-2022 (Current Price & Previous Year Price) GDP CVM-based based on SUT	SUT 52X65
2024	SUT 2022 (Rebasing 2023=100 & I-O): 212x262	SUT 2023-52X65 (Rebasing & I-O)
2025	SUT 2023 (Current Price & Previous Year Price) Pers release GDP-CVM Based for 2025Q1	



Implementation of Changes in 2008 SNA

Concepts and Scopes

- The scope of the agriculture output → including CBR

Methodology

- bank's output methodology: IBSC → FISIM

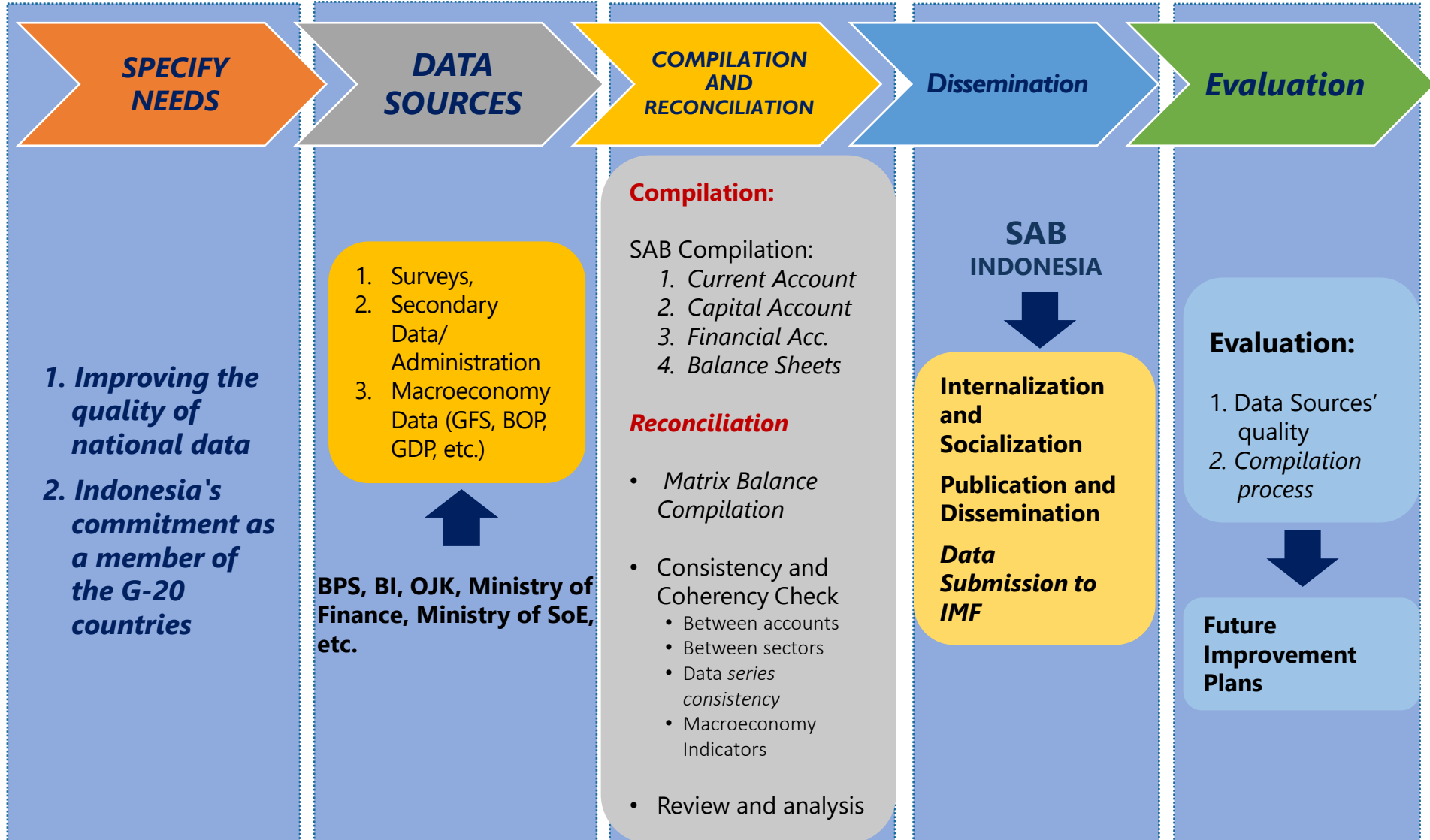
Valuation: Basic Price

Classification

- International Standard Industrial Classification (ISIC rev.4) → adopted as KBLI 2009
- Central Product Classification (CPC rev.2) → adopted as KBKI 2020

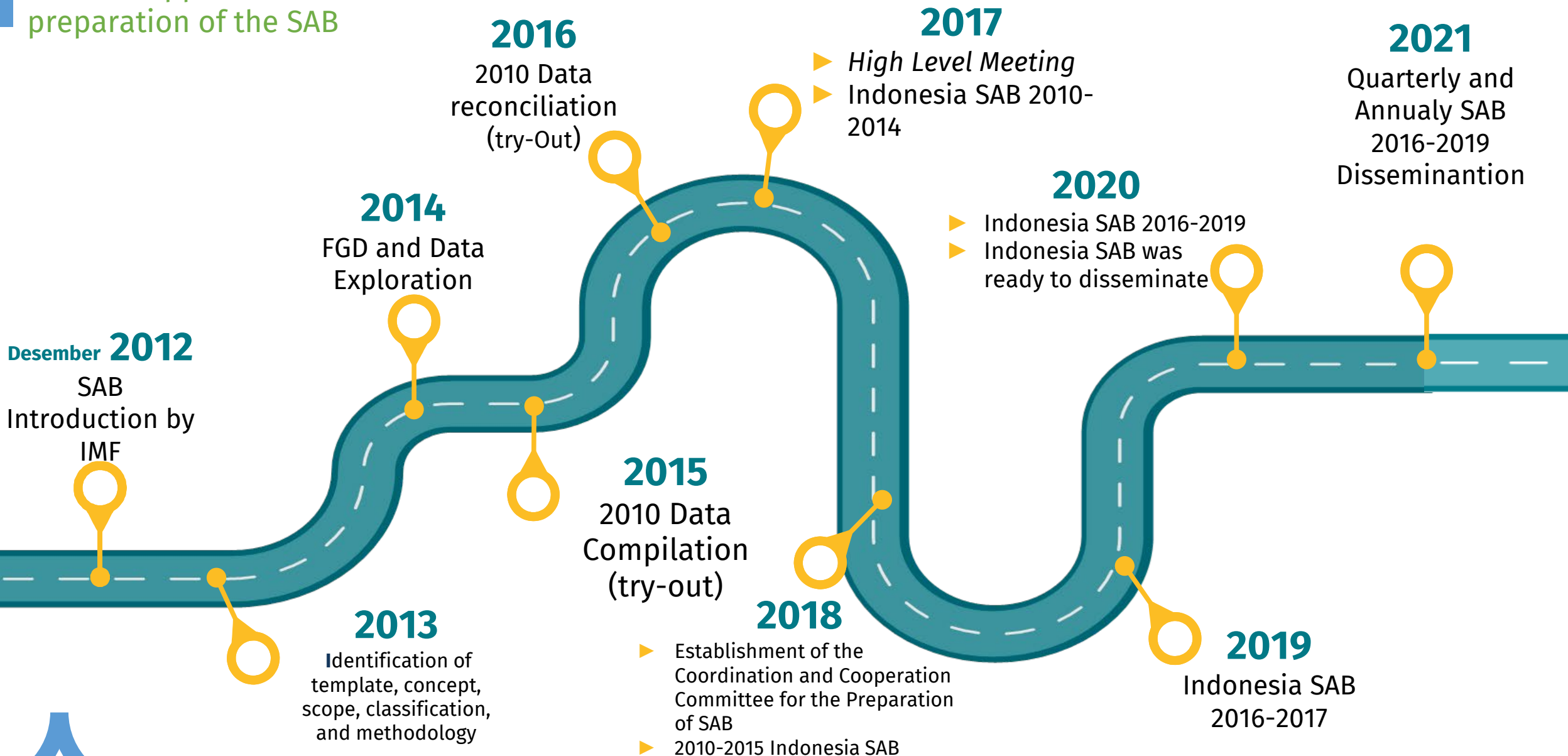


SAB COMPILATION



Achievement of Indonesia SAB

BPS was appointed as the technical coordinator for the preparation of the SAB





Challenges and Future Improvements

Challenges

- **Timeline of SUT**
- **Standardized of Basic Data**
- **Breaking down SUT into Quarterly GDP**
- **Inconsistency between quarterly indicators and annually indicators**
- **Socialization and communication techniques for CVM and seasonal adjustment**

Future Improvements

- **Meets the minimum requirements of DGI-G20 and Target SDDs Plus:**
 - Annual capital stocks
 - Non-Produced Assets
 - Breakdown of Financial Sector
- **Minimizing the time lag of dissemination, according to IMF & OECD standards**
 - Quarterly : 4 months
 - Annually : 9 months
- **Implementation of CVM and seasonal adjustment on GDP/GRDP**

Thank
you!