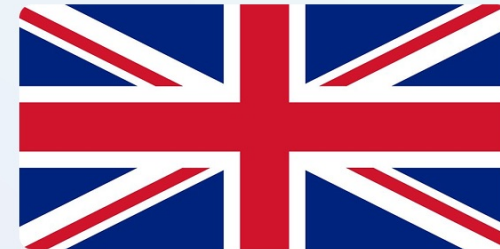
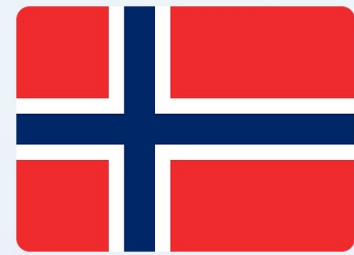




Practice of Compiling the Satellite Account for Education and Training (SAET) in the Republic of Belarus

Irina Sergeichenko
Lyudmila Popkova

Task Force on Satellite Accounts for Education



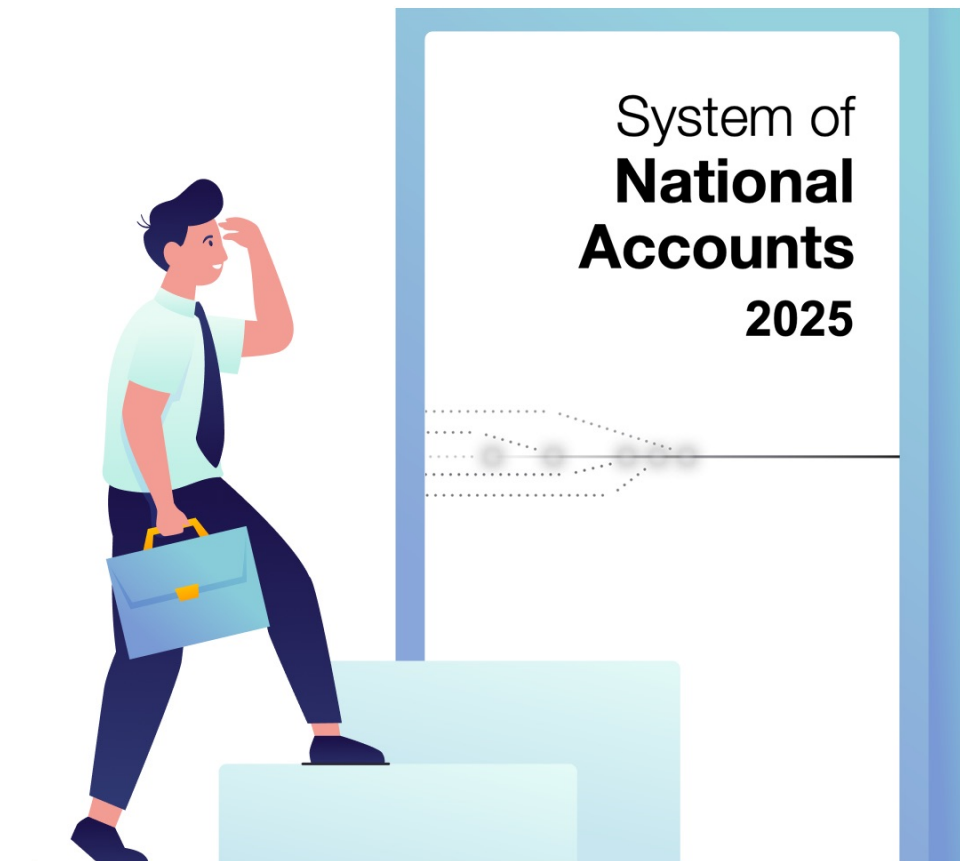
United Nations
Statistics Division



UNITED NATIONS
ECONOMIC COMMISSION
FOR EUROPE

The purpose of SAET is to provide detailed information about education-related expenditures, funding sources, and a breakdown of these expenditures by economic sectors and education levels.

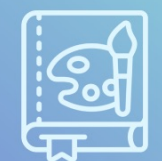
Methodological Basis:



SAET covers expenditures on:



Formal education



Non-formal education



In-house training by employers



Associated goods and services directly related to the delivery
of education and training services



Gross fixed capital formation in the education industry



Classifications

International Standard
Classification of Education
(ISCED 2011)

Classification
of the Functions of Government
(COFOG)

Classification
of the Purposes of Non-Profit
Institutions Serving Households
(COPNI)

Nationwide Classification
of the Republic of Belarus
OKRB 005-2011 "Kinds
of economic activity"

Nationwide Classification
of the Republic of Belarus
OKRB 007-2012
"Classification
of products
by economic activity"

Statistical classification
SK 07.008-2020
"Household expenditure"

Statistical classification
SK 00.007-2015
"Institutional units
by economy sector"



Classifier Correlation Scheme

(using pre-primary education as an example)

Education and training purpose (EP)	ISCED 2011	OKRB 007-2012	OKRB 005-2011	COFOG	COPNI	SK 07.008-2020
EP 0: Early childhood education	01 Early childhood education	85.1 Pre-primary education services	851 Pre-primary education	09.1.1 Pre-primary and primary education	04.1 Pre-primary and primary education (regarding pre-primary education)	10.1 Pre-primary education
	02 Pre-primary education					

Data Sources

Forms of State Statistical Observations

- output
- input
- fixed capital investments utilization
- paid services to population
- household income and expenditure data
- export and import of services data
- employment survey data, etc.

Administrative data

- Ministry of Finance
- Ministry of Education
- Ministry of Taxes and Duties
- National Bank

4 main tables

Education and training output, by provider and education purpose

Education and training expenditure, by purchaser and education and training purpose

Cost structure, by education and training purpose

Financing, by sector and education and training purpose

Education and training output, by provider and education purpose, 2021

Thousands of Belarusian rubles

Code	Education and training purpose	Output by economic sectors					Total output	Imports	Net taxes on products	Total supply
		S11	S12	S13	S14	S15				
		Non-financial corporations	Financial corporations	General government	Households	Non-profit organizations serving households				
A	B	1	2	3	4	5	6	7	8	9
EP 0	Early childhood education	10 083		1 798 042	23 254		1 831 379	582	87	1 832 048
EP 1	Primary education	2 375		1 484 399	35 235	3 000	1 525 009		19	1 525 028
EP 2	Secondary education	26 709		2 491 792	145 345	8 657	2 672 503	5 180	203	2 677 886
EP 3	Higher education	50 737		1 079 185	696	3 784	1 134 402	129 250	2	1 263 654
EP 4	Cultural, sports and recreation education	12 593		566 747	34 623	31 854	645 817	8 516	1 954	656 287
EP 5	Other education and vocational training	273 785		308 805	106 530	4 107	693 227	121 695	21 318	836 240
EP 6	In-house training of employees by their employers	1 123 302					1 123 302			1 123 302
	Associated goods and administrative expenses, not allocated			27 790			27 790			27 790
	Total	1 499 584	0	7 756 760	345 683	51 402	9 653 429	265 223	23 583	9 942 235

Education and training expenditure, by purchaser and education and training purpose, 2021

Thousands of Belarusian rubles

Code	Education and training purpose	Intermediate consumption		Total intermediate consumption	Final consumption expenditure					Exports	Total use
		S11	S12		S13	S131	S133	S14	S15		
		Non-financial corporations	Financial corporations		General government	including		Households	Non-profit organizations serving households		
						Republican budget	Local budget				
A	B	1	2	3	4	5	6	7	8	9	10
EP 0	Early childhood education				1 509 780	5 217	1 504 563	322 111		157	1 832 048
EP 1	Primary education				1 480 476	19 030	1 461 446	42 391	2 086	75	1 525 028
EP 2	Secondary education				2 369 447	93 072	2 276 375	297 357	8 066	3 016	2 677 886
EP 3	Higher education				761 737	698 056	63 681	281 741	2 223	217 953	1 263 654
EP 4	Cultural, sports and recreation education				535 059	68 270	466 789	85 996	35 176	56	656 287
EP 5	Other education and vocational training	56 207	135	56 342	293 132	61 437	231 695	451 375	3 851	31 540	836 240
EP 6	In-house training of employees by their employers	1 123 302		1 123 302							1 123 302
	Associated goods and administrative expenses, not allocated				27 790	26 182	1 608				27 790
	Current expenditures - total	1 179 509	135	1 179 644	6 977 421	971 264	6 006 157	1 480 971	51 402	252 797	9 942 235



Supplementary table on gross fixed capital formation in the production of education and training services, 2021

Thousands of Belarusian rubles

Gross fixed capital formation							
	Market producers		Total gross capital formation of market producers	Non-market producers		Exports	Total gross fixed capital formation
	S11	S12		S13	S15		
	Non-financial corporations	Financial corporations		General government	Non-profit organizations serving households		
A	1	2	3	4	5	6	7
Research and development	6 944		6 944	29 140		-	36 084
Gross fixed capital formation (excluding research and development)	54 670		54 670	681 140	25 993	-	761 803
Total	61 614	0	61 614	710 280	25 993	-	797 887

Cost structure, by education and training purpose, 2021

Thousands of Belarusian rubles

Expenditures	Education and training purposes								Total
	EP 0	EP 1	EP 2	EP 3	EP 4	EP 5	EP 6	Associated goods and administrative expenses, not allocated	
	Early childhood education	Primary education	Secondary education	Higher education	Cultural, sports and recreation education	Other education and vocational training	In-house training of employees by their employers		
A	1	2	3	4	5	6	7	8	9
Intermediate consumption	327 493	273 959	490 372	202 290	126 275	158 103	1 123 302	9 386	2 711 180
Compensation of employees	1 405 775	1 171 582	2 055 637	723 594	452 041	176 299		17 512	6 002 440
Consumption of fixed capital (-)	79 099	86 901	128 087	89 325	36 464	41 044		892	461 812
Taxes on production and imports, less subsidies	87	19	203	2	2 006	23 204			25 521
Net profit and net mixed income	19 012	-7 433	-1 593	119 193	30 985	315 895			476 059
Current domestic expenditures	1 831 466	1 525 028	2 672 706	1 134 404	647 771	714 545	1 123 302	27 790	9 677 012
Imports	582		5 180	129 250	8 516	121 695			265 223
Current expenditures - total	1 832 048	1 525 028	2 677 886	1 263 654	656 287	836 240	1 123 302	27 790	9 942 235

Financing, by sector and education and training purpose, 2021 (using S13, S14 as examples)

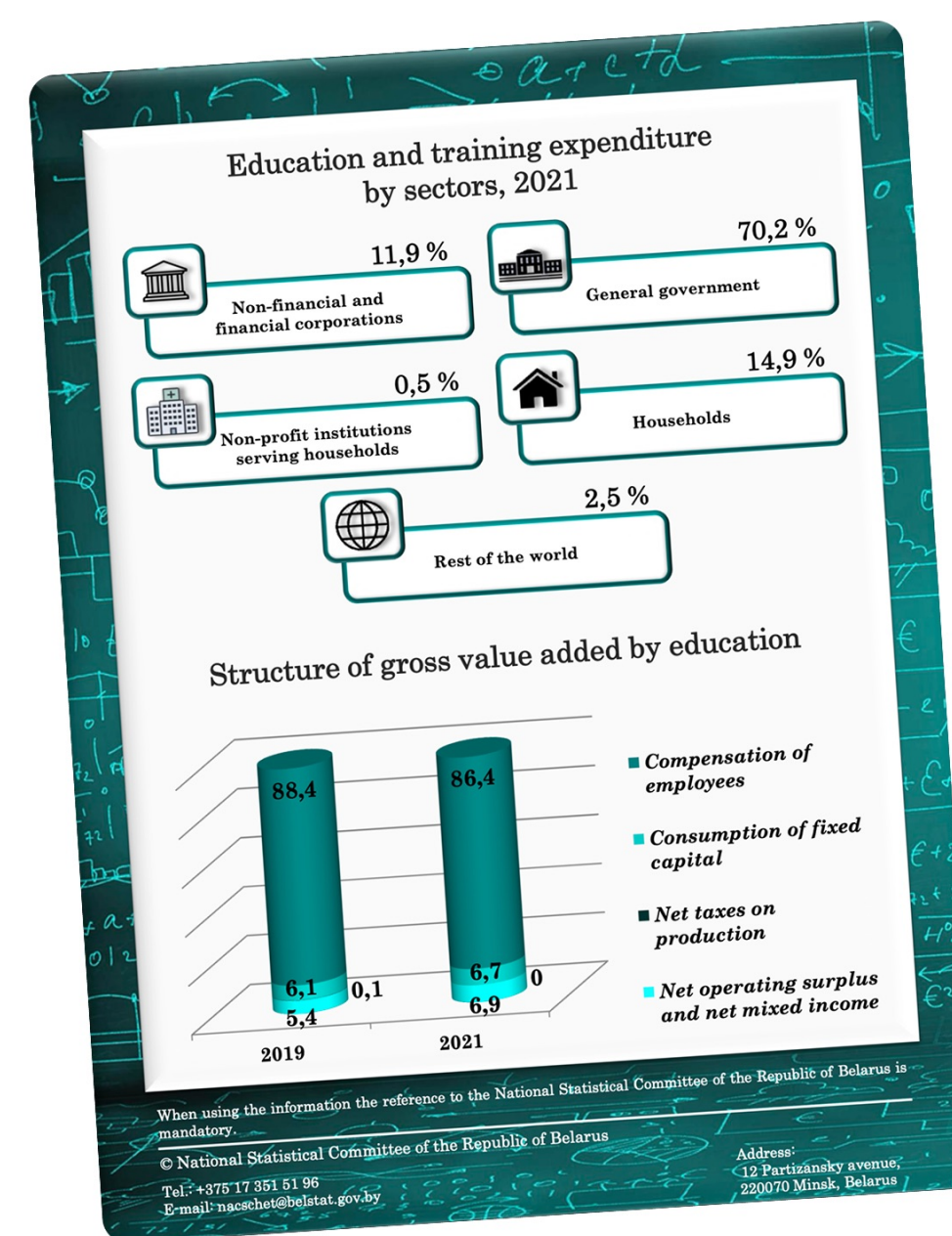
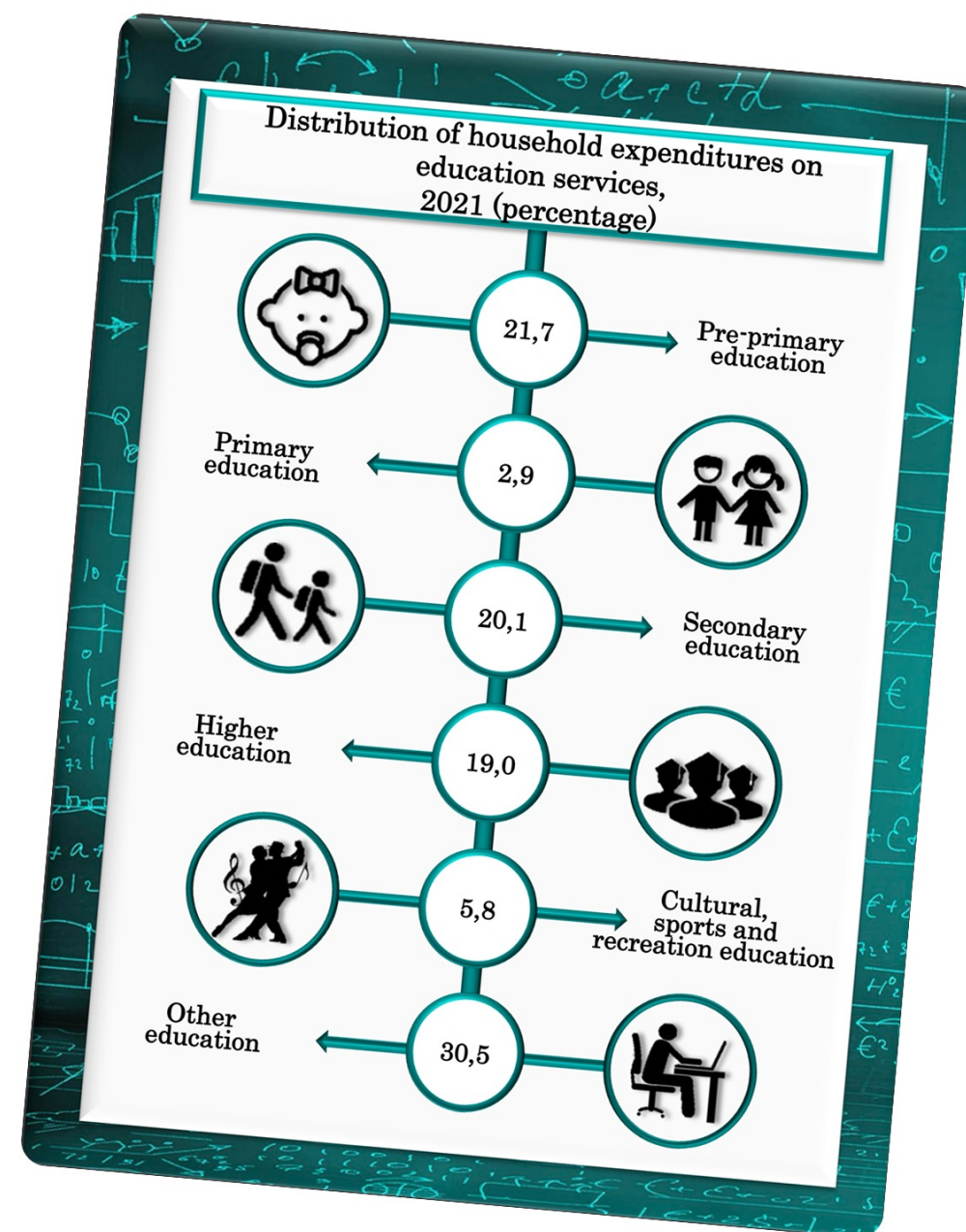
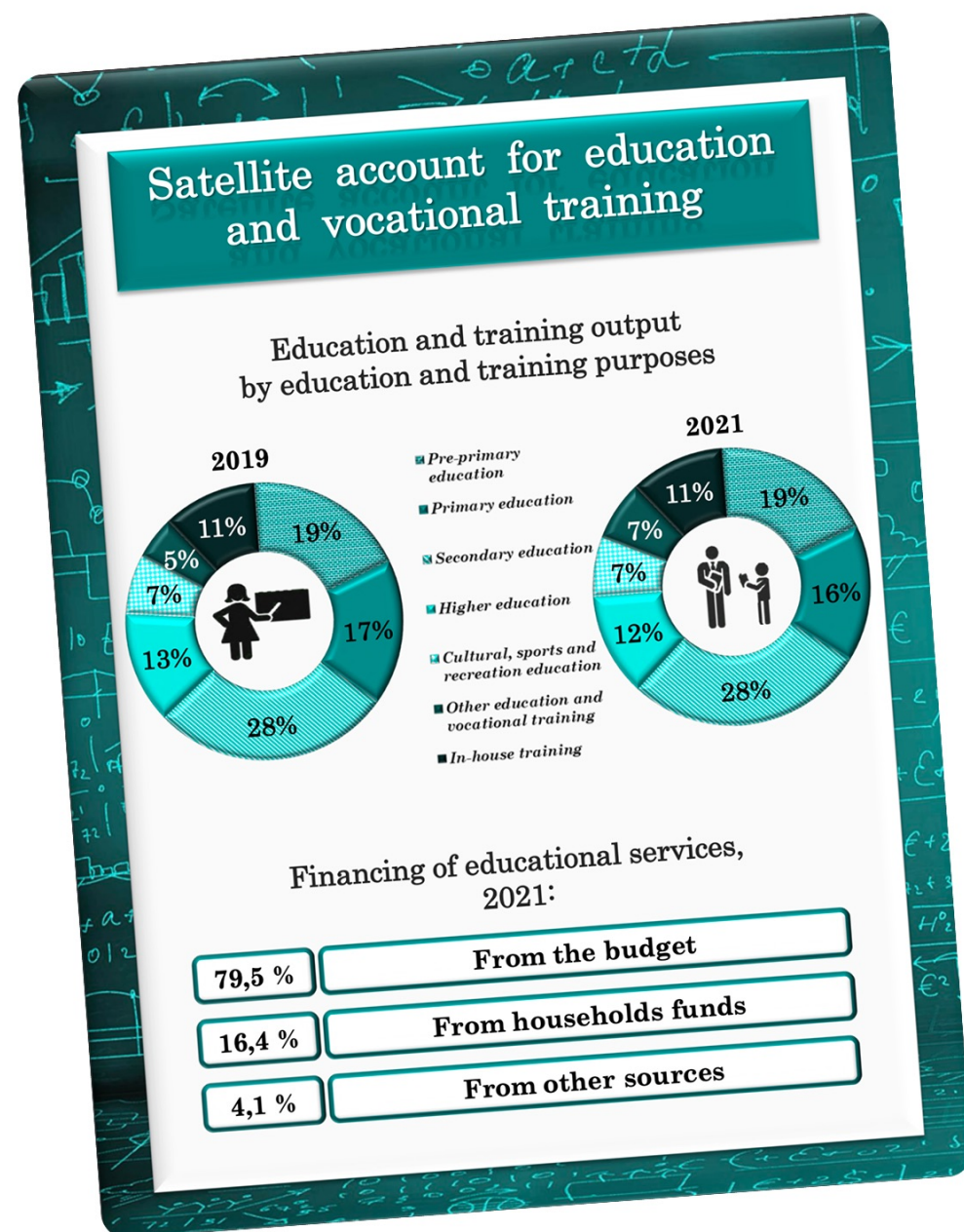
Thousands of Belarusian rubles

		Formal education				Non-formal education			Associated goods and administrative expenses, not allocated	Total
		EP 0	EP 1	EP 2	EP 3	EP 4	EP 5	EP 6		
		Early childhood education	Primary education	Secondary education	Higher education	Cultural, sports and recreation education	Other education and vocational training	In-house training of employees by their employers		
A	B	1	2	3	4	5	6	7	8	9
General government	Final consumption expenditure for general government	1 509 780	1 480 476	2 369 447	761 737	535 059	293 132		27 790	6 977 421
	Plus – transfers / subsidies to sector S14 "Households"	5 249	843	12 193	15 389	1 111	732			35 517
	Plus – transfers / subsidies to other sectors									
	Less – transfers / subsidies to other sectors									
	General government financing	1 515 029	1 481 319	2 381 640	777 126	536 170	293 864		27 790	7 012 938
Households	Final consumption expenditure of sector S14 "Households"	322 111	42 391	297 357	281 741	85 996	451 375			1 480 971
	Plus – transfers to other sectors									
	Less – transfers to other sectors	5 249	843	12 193	15 389	1 111	732			35 517
	Households financing	316 862	41 548	285 164	266 352	84 885	450 643			1 445 454
Rest of the world (export)		157	75	3 016	217 953	56	31 540			252 797
Total expenditure		1 832 048	1 525 028	2 677 886	1 263 654	656 287	836 240	1 123 302	27 790	9 942 235



Information on pupils/students enrolled and teachers in the 2021/2022 academic year

	Level of education								
	ISCED 0	ISCED 1	ISCED 2	ISCED 3	ISCED 4	ISCED 5	ISCED 6	ISCED 7	ISCED 8
Number of students	397 734	452 333	517 115	193 743	8 458	71 734	242 969	12 275	5 415
male	209 005	235 630	268 250	101 739	5 345	34 818	116 331	5 835	2 449
female	188 729	216 703	248 865	92 004	3 113	36 916	126 638	6 440	2 966
Average costs (thousands of Belarusian rubles per pupil/student)	4 606	3 372	3 767		3 707				
Number of teachers	51 449	22 534	50 889	22 543	958	25 284			



<https://www.belstat.gov.by/en/ofitsialnaya-statistika/real-sector-of-the-economy/national-accounts/satellite-account-for-education-and-trainig/>

Areas for SAET Improvement

1

Acquisition of new administrative data

2

Breakdown of consumer expenditures
to identify ancillary goods

3

Incorporation of free electronic courses

4

Early childhood education provision



► Thank you for your attention!

© National Statistical Committee of the Republic of Belarus

12 Partizansky avenue, 220070 Minsk, Belarus

Irina Sergeichenko

Lyudmila Popkova

nacschet@belstat.gov.by