

ADAPT IN A NUTSHELL

ADVANCED DATA PLANNING TOOL



ADAPT 



Content: ADAPT in a nutshell

2

1. What is data planning and its challenges in countries data eco-systems?
2. What is ADAPT and how it can help
3. Who uses ADAPT and why
4. What comes next?



WHAT IS DATA PLANNING AND ITS CHALLENGES?

PARIS
21

SDGs add to many global calls for data

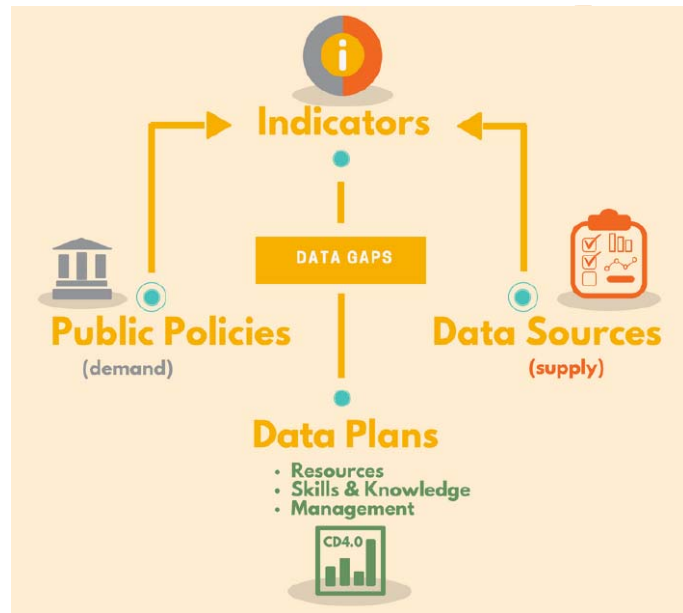


ASIA COOPERATION DIALOGUE

⋮ Data planning

Organizing inputs, processes and relations in a given data ecosystem to align the data production to priority needs in a cost-efficient and user friendly way.

See NSDS guidelines

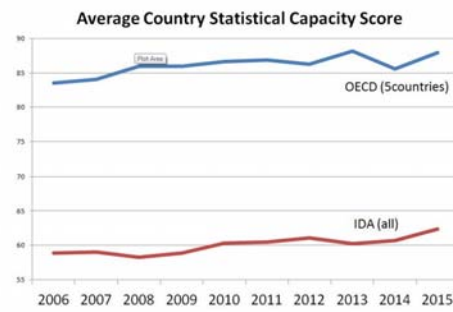


⋮ Challenges with data planning

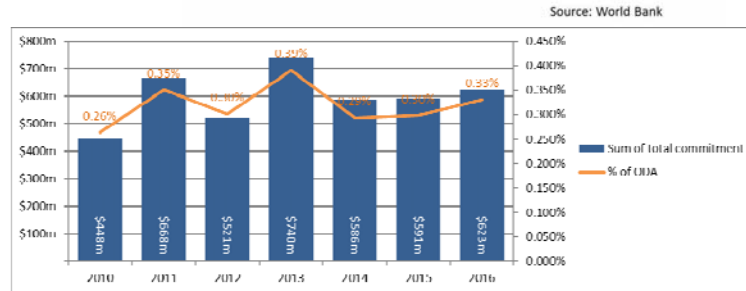
Progress with NSDS over the last 15 years. But new realities:

- Data demands keep changing: more, faster, better and more sophisticated data.
- More data sources, pace of innovation is greater than ever.
- More stakeholders are competing on a booming data market; hence new role for NSO.
- Costing future activities is a challenge, and funding and capacities limited
- Many different data plans exist in a given country's data ecosystem

While statistical capacity and funding still low



7



WHAT IS ADAPT AND HOW CAN IT HELP?

Advanced Data Planning Tool (ADAPT)

WHAT IT IS

- A free **cloud based** application to help data planning
- **Managed by National Agencies:** content, access
- Available in English, French, Spanish, Russian + other languages
- Supported by a learning / training package
- Current Version deployed : 1.1.1 (Q4 2018)

Advanced Data Planning Tool (ADAPT)

WHAT IT DOES

- Monitor data demands from public policies
=> Help identifies policies with no M&E
- Inventory data available – sources and indicators
=> identify data gaps (incl. disaggregation)
- Help identify capacity/skills gaps
- Monitor NSDS / action plans progress
- *Upcoming: costing – budgeting*



WHAT IT DOES NOT: data processing, indicator dissemination

Home Policies Logframes Indicators Data Sources Data Plans Reports

Key Reports Advanced Reports

Policies Logframes Indicators -SDG Indicators Data Sources Data Plans

Demand Demand & supply Capacity Feasibility

Applicable indicators demanded by geographic coverage and by availability status

Chart

Geographic coverage	yes	no	Uncategorized
Global	0	2	0
National	9	12	0
Sub-national	3	4	0

Table

Unique count: 26

Geographic coverage	Count	Indicator (observation value) available in the country?	
		No	Yes
Global	2	2	0
National	21	12	9
Sub-national	9	6	3
Total	20	12	12

Home Policies Logframes Indicators Data Sources Data Plans Reports

Search Indicators

Filter by: Logframes

- National Socio Economic Development Plan
 - 1 Accelerate pro-poor growth and ensure that th
 - 2 Strengthen maternal and child health
- Demoland Health Sector Strategic Plan, I
- Eastern Province of Demoland - Education
- SDG Global Indicators, Sustainable Devel

View - 1.1.1.1 Total Poverty Head count

Link with primary: Logframe Policy No Link National Socio Economic Development Plan_logframe

Description Mapping Applicability Availability Compliance Feasibility Completeness - 49%

Preceding level and value

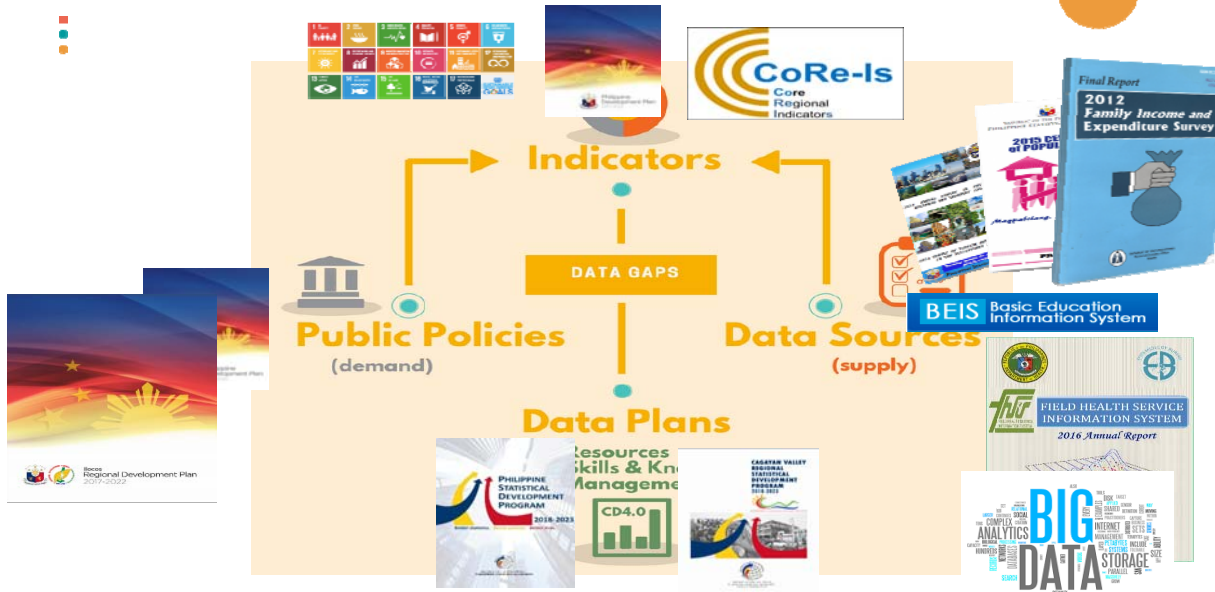
1 - Accelerate pro-poor growth and ensure that the growth process rapidly reduces poverty / 1.1 - Reduce poverty by sustaining double digit economic growth / 1.1.1 - Decreased proportion of population living below poverty line

Description & demand information

Identification		
Disaggregation & Frequency	Machine generated id	82-i-14402
Organisations	Hierarchy	1.1.1 1
Data Sources	User-defined ID	Empty
	Machine generated id	Total Poverty Head count

ADAPT workflow in the Philippines

13



WHO USE ADAPT ? AND WHY?

ADAPT: Worldwide users

Used by NSOs (and NSS) in 10 countries.

Being introduced in 20+ countries

Big demand from NSOs and Planning Commissions

- + **Promoted by UNSD** for SDG readiness assessment – methodology compatible
- + **Promoted by UNDP** for SDG localization
- + **Many other Partners**

USE 1: Policy responsive data

- How many SDGs/global indicators are applicable (and relevant) in my country?
- How many indicators are reflected in my National Policies indicators?
- How many indicators are available today? For which sectors? Who produce them? Who is supposed to do it?
- What is the availability prospect / feasibility for the close future?
- Which are the indicators requiring development?

USE 2: Make Data Planning Agile

NSDS guidelines :
<http://nsdsguidelines.paris21.org/node/236>

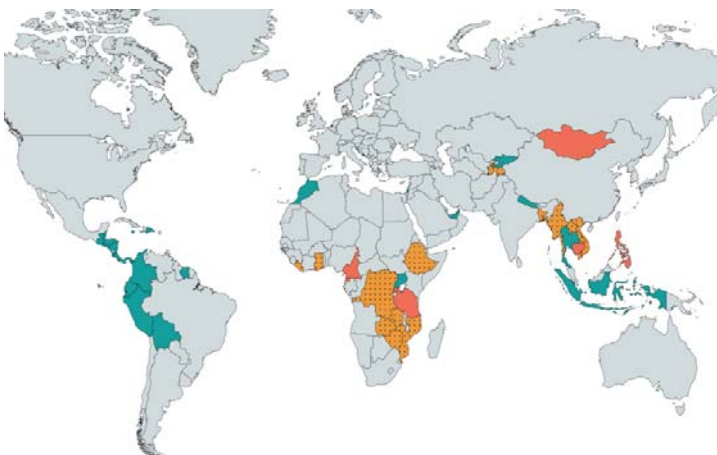


WHAT NEXT?

⋮ New functionalities

- **Costing and budgeting**
- **Links to data inventories**
- Basic e-learning : the ADAPT essentials
- Webinars with users
- Series of Regional ADAPT Training Workshops

⋮ ADAPT Outreach



ADAPT around the world

- **7** Countries currently using ADAPT
 - Cambodia
 - Cameroon
 - Equatorial Guinea
 - Mongolia
 - Philippines
 - Rwanda
 - Tanzania
- **22** Countries currently assessing ADAPT / being introduced to ADAPT
- **17** Additional countries introduced to ADAPT through UNSD partnerships



<https://adapt.paris21.org/try-it-now>

Thank you

www.paris21.org

Francois.Fonteneau@oecd.org