

Session 7: Interpreting trends and measuring progress

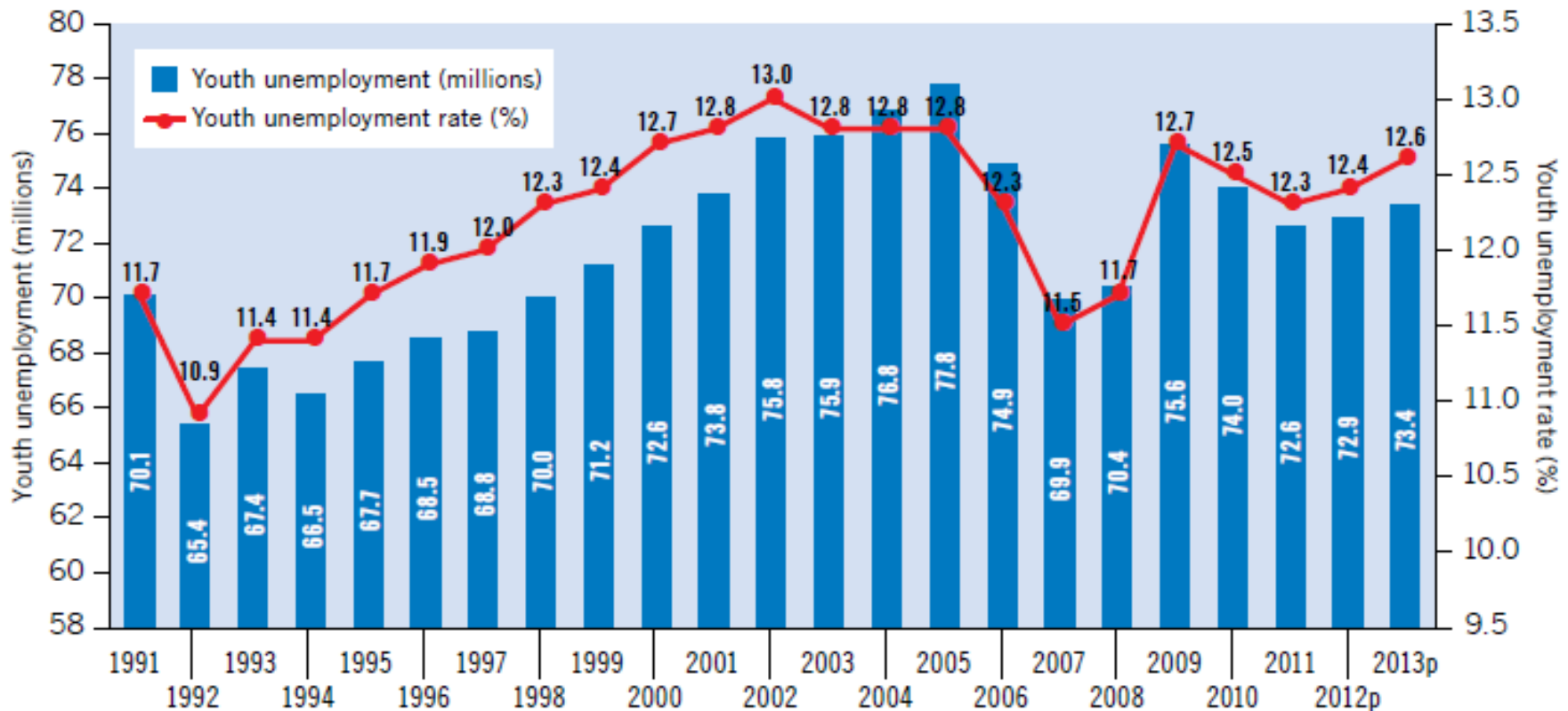
Youth Global Trends- Numbers (2013)

Table A1. Global unemployment and unemployment rates, youth (15–24), adult (25+) and total (15+), 2007–13

	2007	2008	2009	2010	2011	2012p	2013p
Youth unemployment (millions)	69.9	70.4	75.6	74.0	72.6	72.9	73.4
Adult unemployment (millions)	99.8	104.4	120.7	120.0	119.7	122.5	128.1
Total unemployment (millions)	169.7	174.8	196.4	194.0	192.3	195.4	201.5
Youth unemployment rate (%)	11.5	11.7	12.7	12.5	12.3	12.4	12.6
Adult unemployment rate (%)	4.0	4.1	4.6	4.5	4.5	4.5	4.6
Total unemployment rate (%)	5.4	5.5	6.1	6.0	5.9	5.9	6.0
Ratio of youth-to-adult unemployment rates	2.9	2.9	2.7	2.8	2.8	2.8	2.7

Youth Global Trends- UR (2013)

Figure 1. Global youth unemployment and unemployment rate, 1991–2013



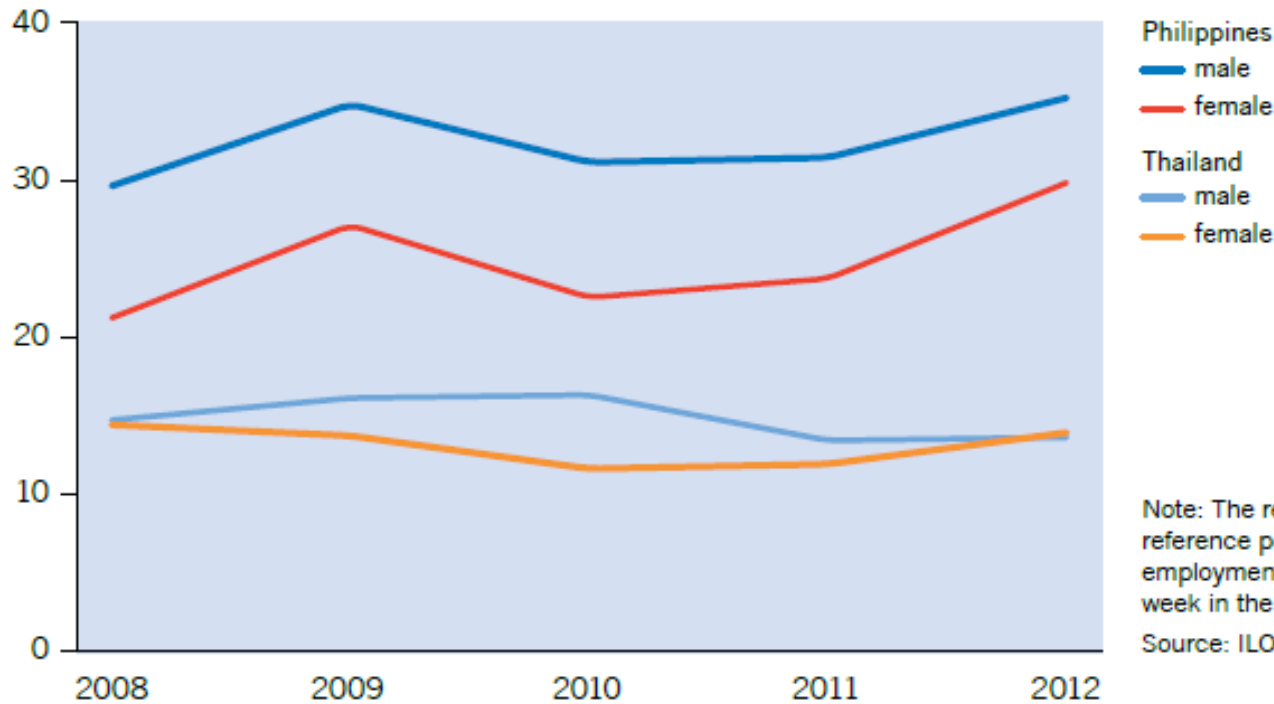
p = projection

Source: ILO: *Trends Econometric Models*, April 2013.

Youth in part-time work, 2 countries

Part-time work is important for youth in developing economies.

Figure 7. Part-time employment rates in the Philippines and Thailand, by sex, 2008–12 (%)



Note: The reference period for the Philippines is April; the reference period for Thailand is July-September; part-time employment is defined as working less than 30 hours per week in the main occupation.

Source: ILO estimates from national labour force surveys.

Decent work for youth

- **The decent work (DW) agenda applies for youth as for the overall population;**
- **Equal opportunities for youth and equal access to the labour market;**
- **Quite often: youth as one of the main priority group of the DW agenda.**

Decent work agenda: what is it (1)?

- Productive work that delivers...*
 - ❑ A fair income
 - ❑ Security in the workplace
 - ❑ Social protection for workers and their families
 - ❑ Better prospects for personal development and social integration
 - ❑ Freedom to express concerns, organize and participate in decisions that affect lives
 - ❑ Equality of opportunity and treatment for all.

* <http://www.ilo.org/global/Themes/Decentwork/lang--en/index.htm>

Decent work agenda: Measurement

- Measurement of decent work implies:
 - Coverage of all elements of the Decent Work Agenda (beyond employment opportunities),
 - Coverage of all workers,
 - Concern for the most vulnerable workers, e.g. YOUTH,
 - Cross-cutting & specific concern for gender,
 - Importance of social & economic context.
 - No composite index, and no ranking of countries,
 - Include institutional and legal framework indicators.

DW Indicators grouping in 10 elements

1. Economic and social context for decent work
2. Employment opportunities
3. Adequate earnings and productive work
4. Decent hours
5. Combining work, family and personal life
6. Work that should be abolished
7. Stability and security of work
8. Equal opportunity and treatment in employment
9. Safe work environment
10. Social security
11. Social dialogue, workers' and employers' representation