



Statistics on Youth in the Labour Market- 1. Some Data/ exercise

Tite Habiyakare
Senior Statistician

ILO Regional Office for Asia & the Pacific, Bangkok

habiyakare@ilo.org



Youth Global Trends- Numbers (2013)

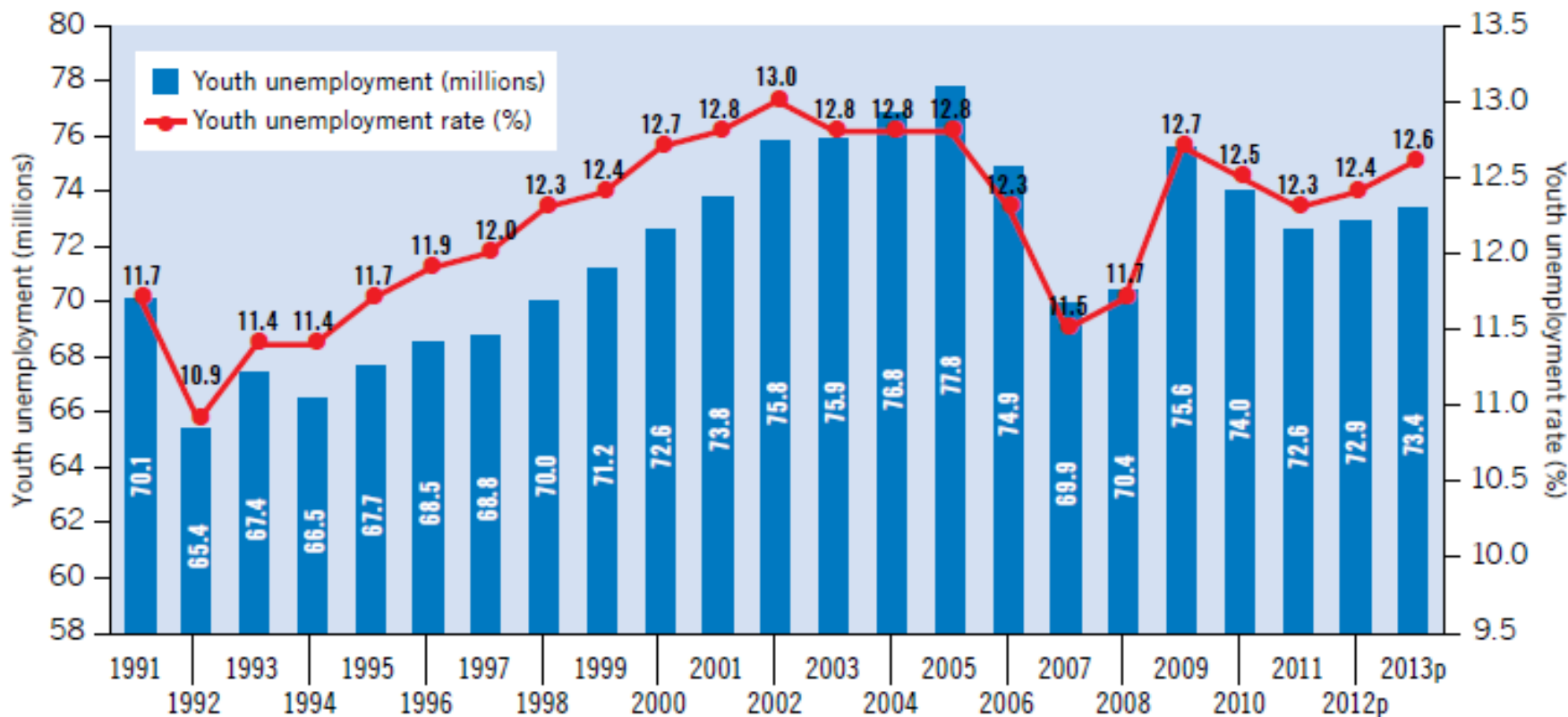
Table A1. Global unemployment and unemployment rates, youth (15–24), adult (25+) and total (15+), 2007–13

| | 2007 | 2008 | 2009 | 2010 | 2011 | 2012p | 2013p |
|--|-------|-------|-------|-------|-------|-------|-------|
| Youth unemployment (millions) | 69.9 | 70.4 | 75.6 | 74.0 | 72.6 | 72.9 | 73.4 |
| Adult unemployment (millions) | 99.8 | 104.4 | 120.7 | 120.0 | 119.7 | 122.5 | 128.1 |
| Total unemployment (millions) | 169.7 | 174.8 | 196.4 | 194.0 | 192.3 | 195.4 | 201.5 |
| Youth unemployment rate (%) | 11.5 | 11.7 | 12.7 | 12.5 | 12.3 | 12.4 | 12.6 |
| Adult unemployment rate (%) | 4.0 | 4.1 | 4.6 | 4.5 | 4.5 | 4.5 | 4.6 |
| Total unemployment rate (%) | 5.4 | 5.5 | 6.1 | 6.0 | 5.9 | 5.9 | 6.0 |
| Ratio of youth-to-adult unemployment rates | 2.9 | 2.9 | 2.7 | 2.8 | 2.8 | 2.8 | 2.7 |



Youth Global Trends- UR (2013)

Figure 1. Global youth unemployment and unemployment rate, 1991–2013



p = projection

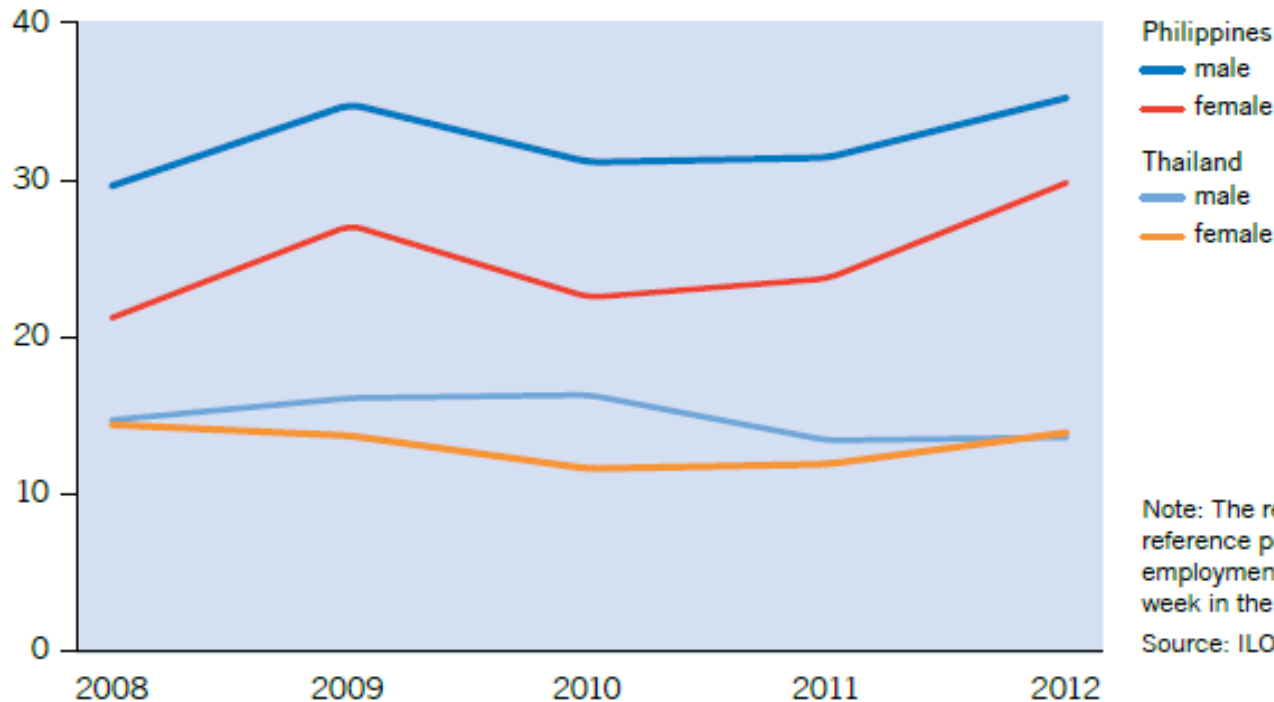
Source: ILO: *Trends Econometric Models*, April 2013.



Youth in part-time work, 2 countries

Part-time work is important for youth in developing economies.

Figure 7. Part-time employment rates in the Philippines and Thailand, by sex, 2008–12 (%)



Note: The reference period for the Philippines is April; the reference period for Thailand is July-September; part-time employment is defined as working less than 30 hours per week in the main occupation.

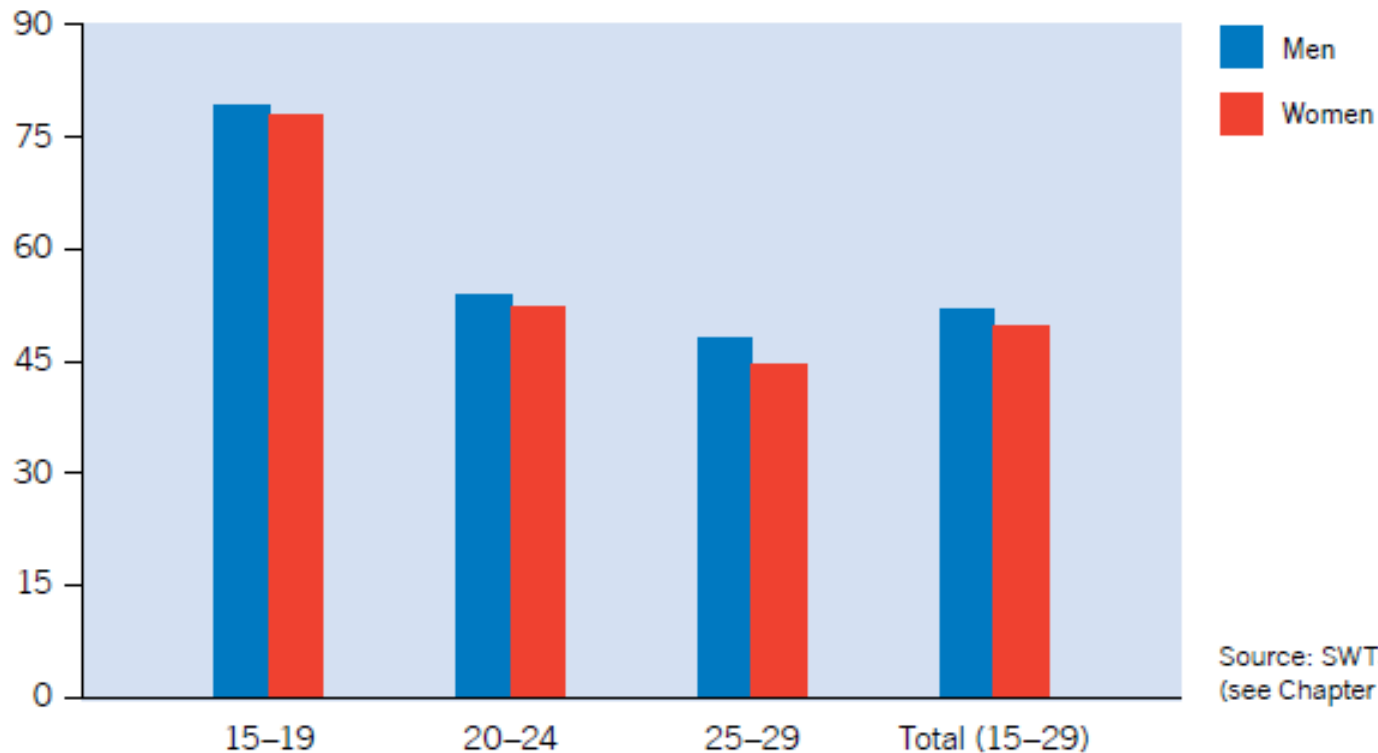
Source: ILO estimates from national labour force surveys.



Youth in informal employment, Russia

Informal employment accounts for half of young workers in the Russian Federation.

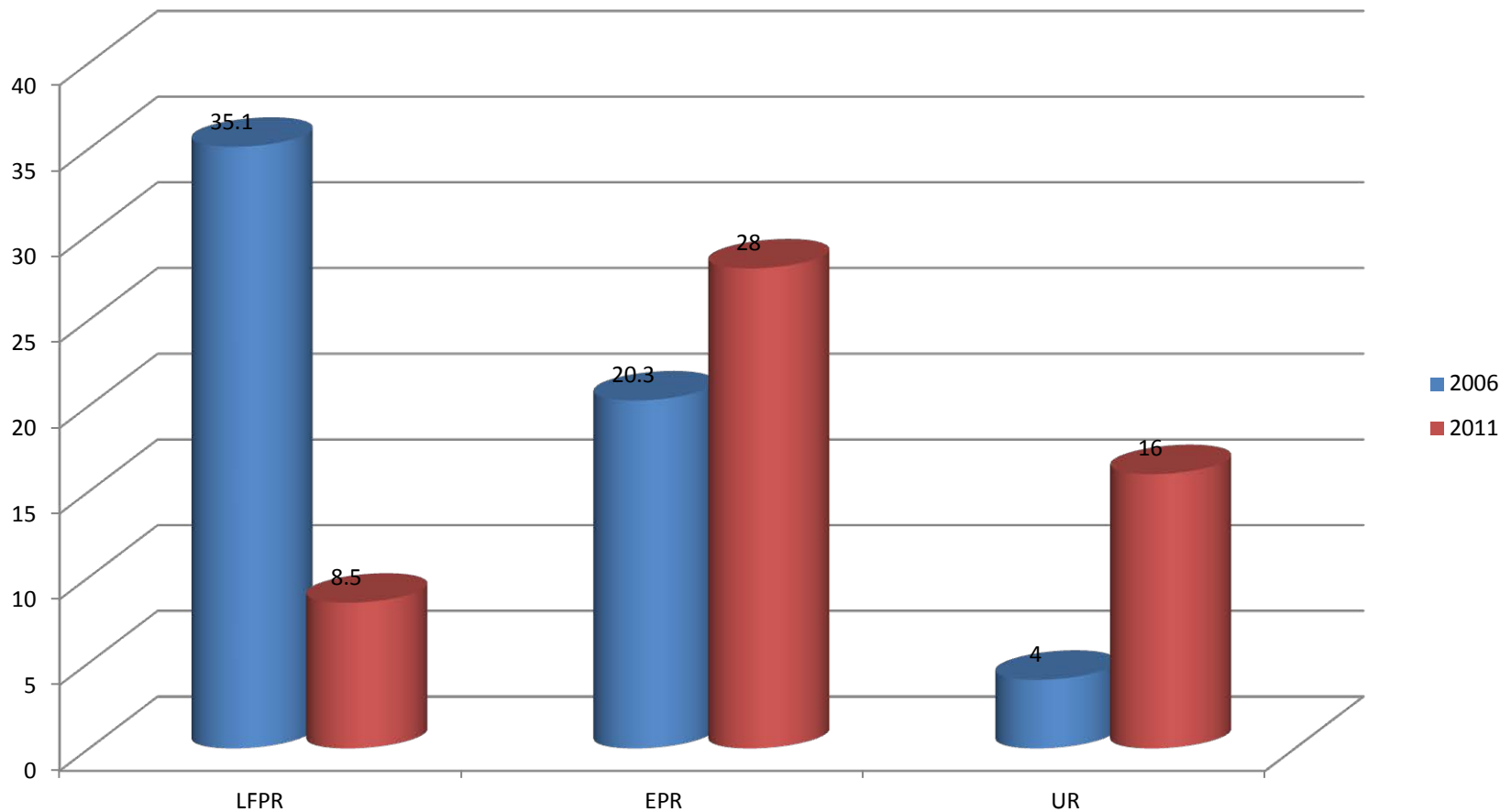
Figure 8. Young workers in informal employment in the Russian Federation, by sex and age group, 2012 (%)



Source: SWTS, Russian Federation, 2012 (see Chapter 4 for more information).



Youth indicators, Samoa (SPC/NMDI)



Source: www.spc.int/nmdi



Decent work indicators for youth

Vinaka !