

Country Report, Statistical Business Register.

**National Institute of Statistics,
Ministry of Planning,
Cambodia**

Regional Course on

Statistical Business Registers:

Making a Business Case for an Operational Statistical Business Register

26-30 January 2015

Perak, Malaysia.

SBR Attachment Program, 4-11 February 2015

Content:

1. Overview
2. Coverage and Framework
3. Content
4. Updating Guidelines and Procedures
5. Uses of the SBR in Cambodia
6. Issues and Limitations
7. Future Plans

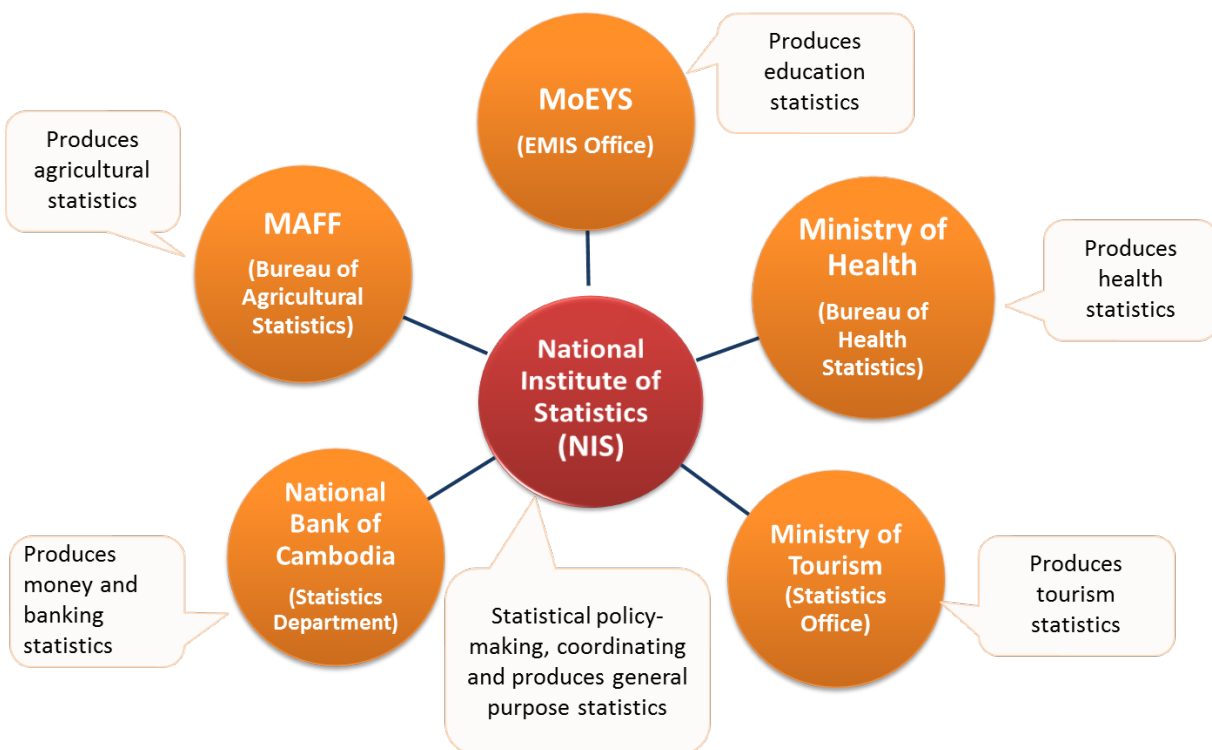
1. Overview of the National Statistical System and the National Implementing Agency:

❖ Legal framework:

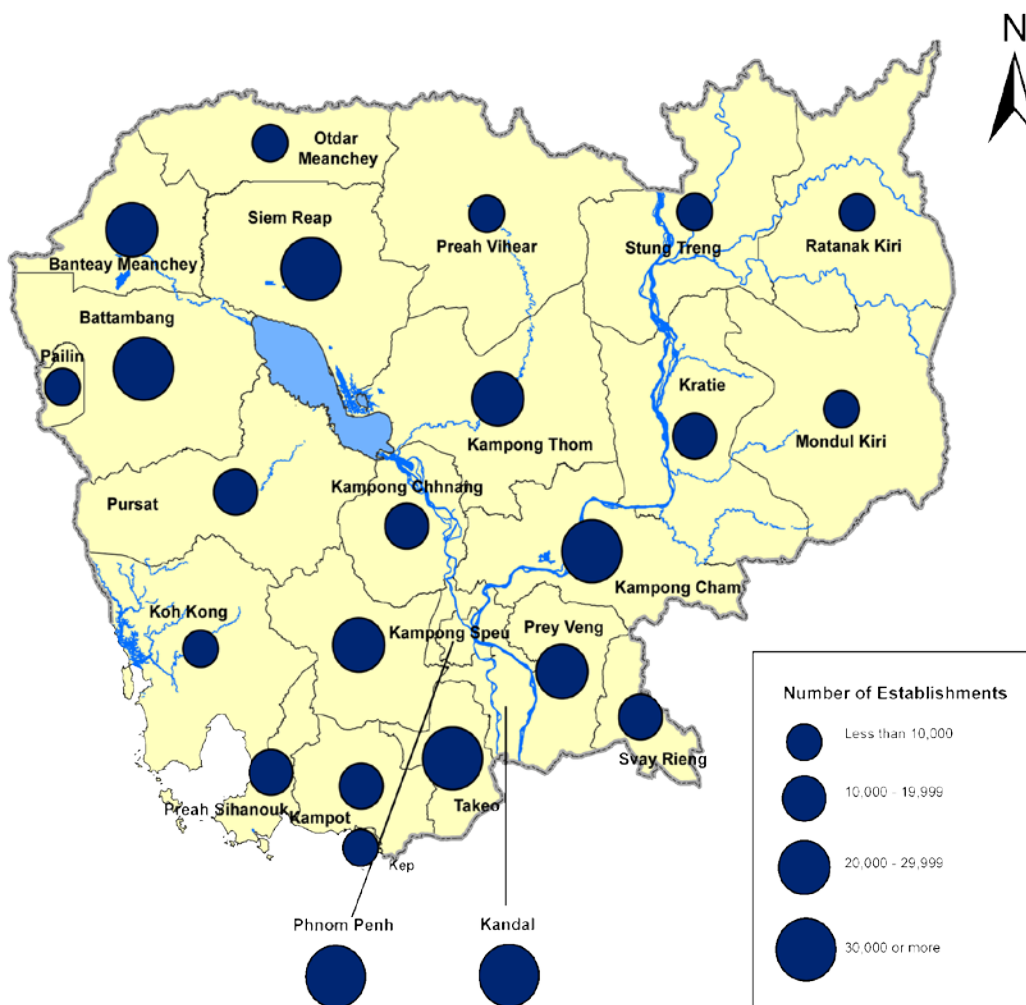
- ✓ Statistics Law – 9 May 2005, governs matters related to statistics
- ✓ Under the Law, two Sub-decrees that define the work for the NSS:
- ✓ Sub-decree on Organization and Functioning of the NSS-creates Statistics Advisory Council (SAC) and the Statistics Coordination Committee (SCC)
- ✓ Sub-decree on Designated Official Statistics-defines responsibilities of statistical units within each ministry/institution and obligations with the NIS

❖ Coordination mechanisms:

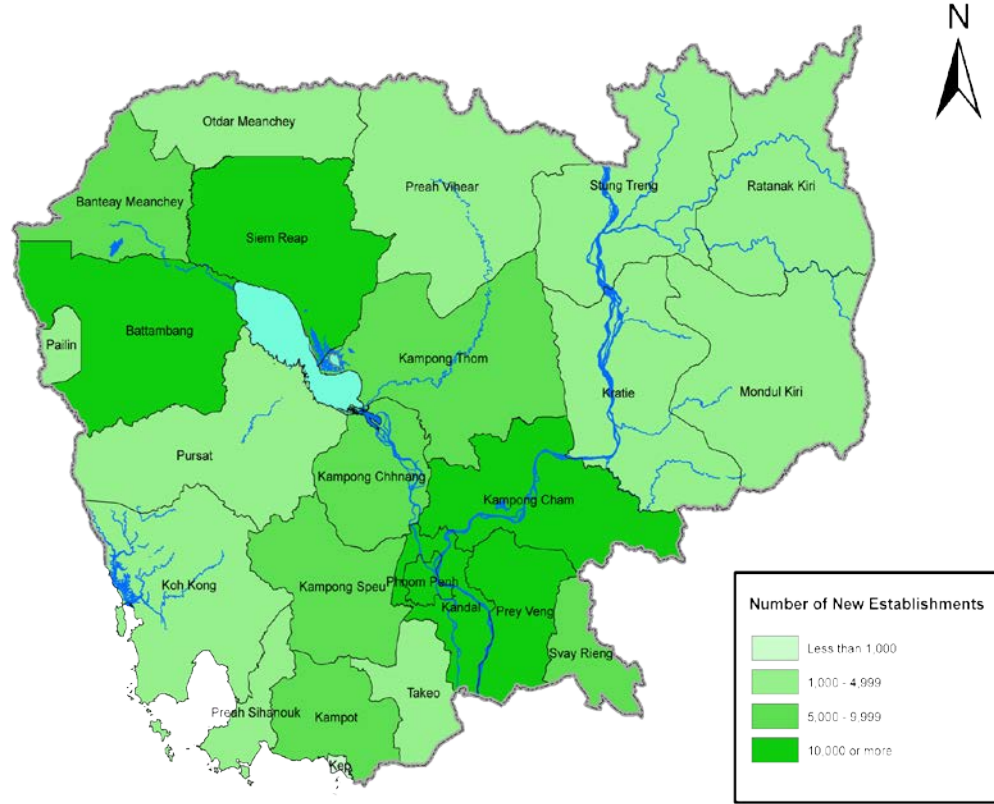
- ✓ National Statistical System (NSS) of Cambodia is decentralized in two-tiered structure:
 - National Institute of Statistics (NIS) – the official statistical policy-making body and coordinator, and empowered to collect statistics under the Statistics Law. It has Statistics Unit in Planning Office of all 25 provinces and municipality
 - 28 Line Ministries/Institutions and National Bank of Cambodia – collect statistics as by-products of administrative systems or/and jointly conduct sectorial surveys with NIS



- ❖ Overview of SBR in place (or list of establishments/sampling frame if SBR is not available)
- ✓ The NIS started Quarterly Establishment Survey in 1993, 1996; Establishment Sample Survey in 2000 using BR from other ministries, issues (more on large establishments, not exist, different name to enjoy tax holiday, etc.), no choice
- ✓ In 2009 NIS exercises establishment listing in preparation for Establishment/Economic (include sellers) Census 2011, where the 1st full establishment listing begins. Currently, the NIS is conducting Cambodia Inter-censal Economic Survey 2014
- ✓ Legal basis: Statistics Law, Sub Decree leading to National, Technical, Provincial, National Steering Committees having compositions from line ministries, and provinces
- ✓ Who maintains it?: NIS; Department in charge of economic census, and ICT Department
- ❖ **Some Results of Establishment Census 2011**
 - **Number of Establishments by Province (2011)**

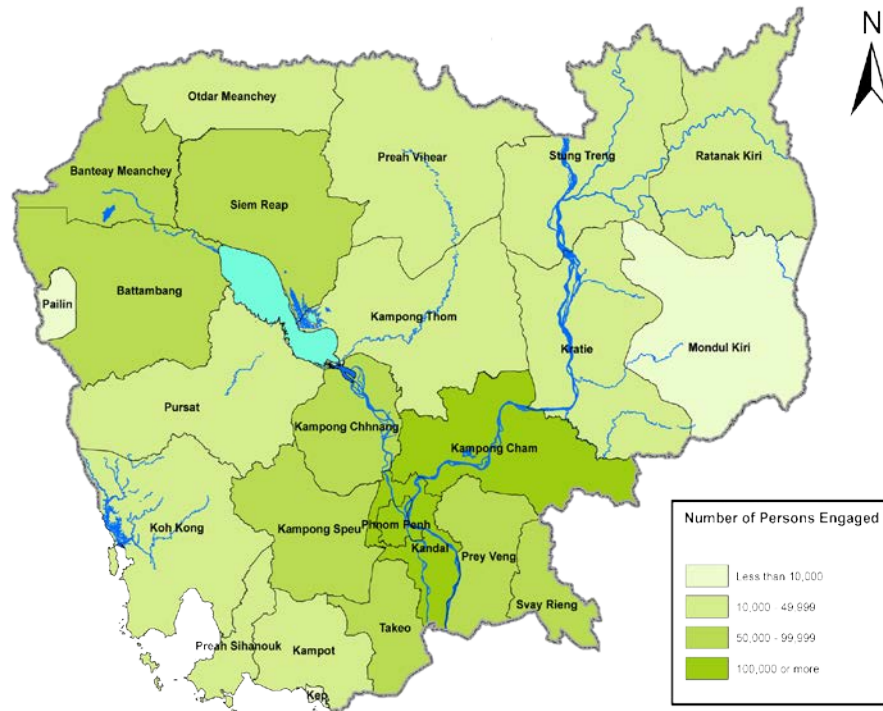


- **Number of New Establishments by Province - 2011**



* New establishments: mean establishments which started business between 1 January 2009 and 1 March 2011

- **Number of Persons Engaged by Province-2011**



- List of establishments/sampling frame 2011

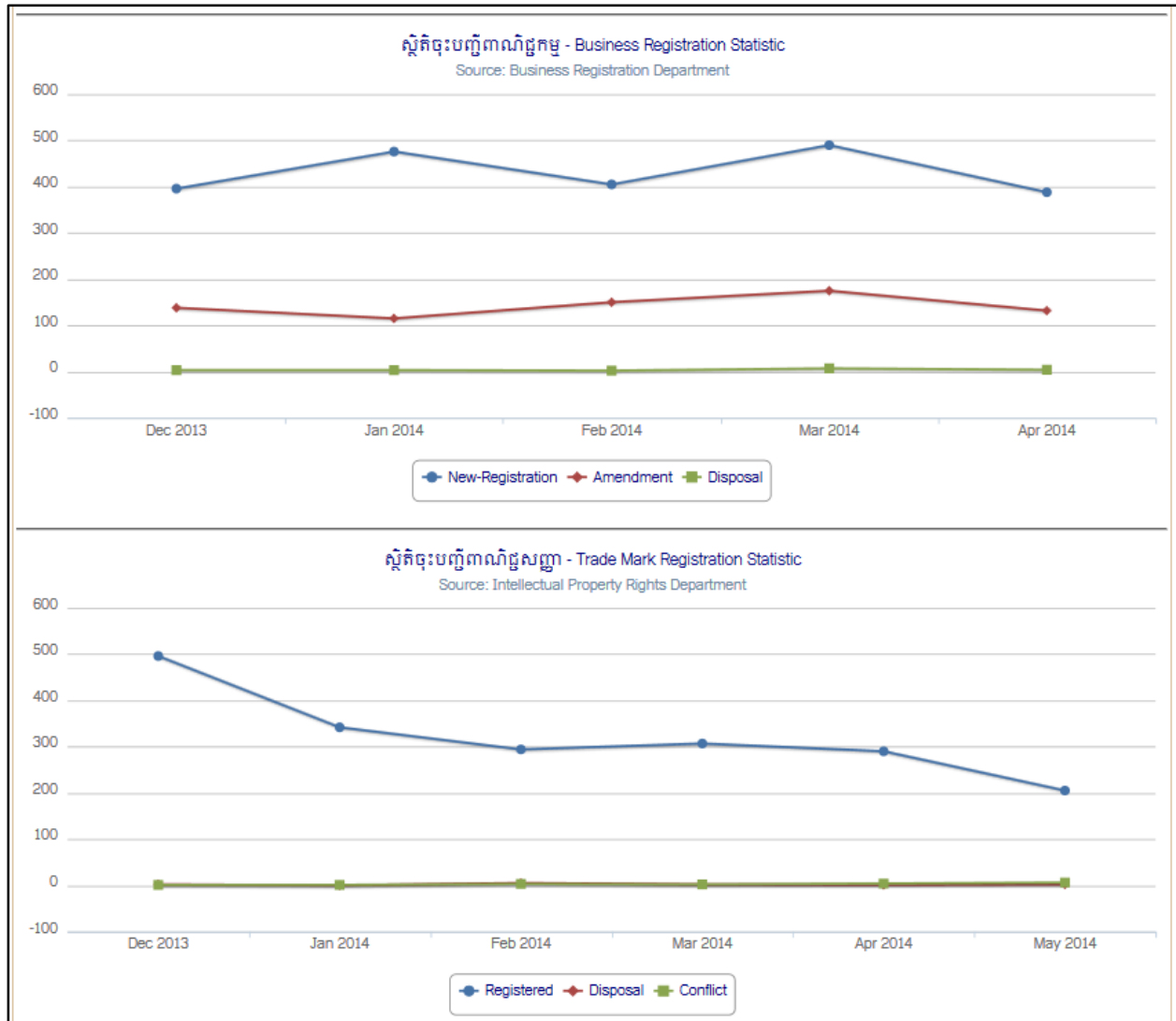
The screenshot displays a Microsoft Excel spreadsheet titled 'ind_data2na.xlsx'. The spreadsheet contains a data table with 40 rows and 27 columns. The columns are labeled as follows: A1, B, C, D, E, F, G, H, I, J, K, L, M, N, O, P, Q, R, S, T, U, V, W, X, Y, Z, AA, AB. The rows are numbered 1 through 40. The data in the table consists of numerical values, primarily 0, 1, and 2, with some rows containing larger numbers like 12, 13, 15, 16, 20, 22, 24, 25, 28, 30, 31, 32, 33, 34, 35, 36, 37, 38, 39, and 40. The data appears to be organized into groups, with columns 1-6 (Q1_1 to Q1_6) and columns 10-15 (Q10 A_1 to Q10 A_5) showing similar patterns of values. The status bar at the bottom indicates 'Ready' and 'Data'.

	A1	B	C	D	E	F	G	H	I	J	K	L	M	N	O	P	Q	R	S	T	U	V	W	X	Y	Z	AA	AB
1	Q1_1	Q4_1	Q4_2a	Q4_2b	Q4_2c	Q4_2d	Q5	Q7_2	Q10 A_1	Q10 A_2	Q10 A_3	Q10 A_4	Q10 A_5	Q10 A_1	Q10 A_2	Q10 A_3	Q10 A_4	Q10 A_5	Q10 A2_1	Q10 A2_2	Q10 A2_3	Q10 A2_4	Q10 A2_5	Q10 A3_1	Q10 A3_2	Q10 A3_3	Q10 A3_4	Q10 A3_5
2	1	2	0	0	0	0	12	1	1	0	0	1	1	1	0	0	1	0	0	1	0	0	0	0	0	0	0	0
3	1	2	0	0	0	0	12	3	3	0	0	3	1	1	0	0	1	2	2	0	0	2	0	0	0	0	0	0
4	1	2	0	0	0	0	12	2	2	0	0	2	1	1	0	0	1	1	1	0	0	1	0	0	0	0	0	0
5	1	2	0	0	0	0	12	2	2	0	1	1	1	1	0	0	1	1	1	0	1	1	0	1	0	0	0	0
6	1	2	0	0	0	0	12	1	1	1	0	0	1	1	1	0	0	1	0	0	1	0	0	0	0	0	0	0
7	1	2	0	0	0	0	12	1	1	0	0	1	1	1	1	0	0	1	0	0	1	0	0	0	0	0	0	0
8	1	2	0	0	0	0	12	1	1	1	0	0	1	1	1	0	0	1	0	0	1	0	0	0	0	0	0	0
9	1	2	0	0	0	0	12	2	2	2	0	1	1	1	1	0	1	1	1	0	1	1	0	0	1	0	0	0
10	1	2	0	0	0	0	12	1	1	0	0	1	1	1	1	0	0	1	0	0	1	0	0	0	0	0	0	0
11	1	2	0	0	0	0	12	1	1	1	0	0	1	1	1	0	0	1	0	0	1	0	0	0	0	0	0	0
12	1	2	0	0	0	0	12	2	2	0	0	2	1	1	1	0	0	1	1	1	0	0	0	1	0	0	0	0
13	1	2	0	0	0	0	12	1	1	1	0	0	1	1	1	0	0	1	0	0	1	0	0	0	0	0	0	0
14	1	2	0	0	0	0	12	2	2	2	0	2	1	1	1	0	0	1	1	1	0	0	1	0	0	0	0	0
15	1	2	0	0	0	0	12	2	2	0	1	1	1	1	1	0	0	1	1	1	0	0	1	0	0	0	0	0
16	1	2	0	0	0	0	12	1	1	1	0	1	0	1	1	0	0	1	0	0	0	0	0	0	0	0	0	0
17	1	2	0	0	0	0	12	5	5	0	3	2	1	1	1	0	0	1	4	4	0	3	1	0	0	0	0	0
18	1	2	0	0	0	0	12	1	1	0	0	1	1	1	1	0	0	1	0	0	1	0	0	0	0	0	0	0
19	1	2	0	0	0	0	12	1	1	0	1	0	1	1	1	0	0	1	0	0	0	0	0	0	0	0	0	0
20	1	2	0	0	0	0	12	2	2	2	0	1	1	1	1	0	0	1	1	1	0	1	0	0	0	0	0	0
21	1	2	0	0	0	0	12	2	2	0	1	1	1	1	1	0	1	1	1	0	1	1	0	0	1	0	0	0
22	1	2	0	0	0	0	12	2	2	0	1	1	1	1	1	0	0	1	1	1	0	1	0	0	0	0	0	0
23	1	2	0	0	0	0	12	5	5	0	4	1	1	1	1	0	0	1	4	4	0	4	0	0	0	0	0	0
24	1	2	15	0	0	0	136	1	1	0	1	0	1	1	1	0	0	1	0	0	0	0	0	0	0	0	0	0
25	1	2	0	0	0	0	12	1	1	0	1	0	1	1	1	0	0	1	0	0	0	0	0	0	0	0	0	0
26	1	2	0	0	0	0	12	1	1	0	1	0	1	1	1	0	0	1	0	0	0	0	0	0	0	0	0	0
27	1	2	0	0	0	0	12	2	2	0	1	1	1	1	1	0	0	1	1	1	0	1	0	0	0	0	0	0
28	1	2	0	0	0	0	12	1	1	0	0	1	1	1	1	0	0	1	0	0	0	0	0	0	0	0	0	0
29	1	2	0	0	0	0	13	2	2	0	0	2	1	1	1	0	0	1	1	1	0	1	0	0	1	0	0	0
30	1	2	0	0	0	0	12	2	2	0	1	1	1	1	1	0	0	1	1	1	0	1	0	0	0	0	0	0
31	1	2	0	0	0	0	12	2	2	0	2	0	1	1	1	0	0	1	1	1	0	1	0	0	0	0	0	0
32	1	2	12	0	0	0	12	4	4	0	3	1	1	1	1	0	1	0	3	3	0	2	1	0	0	0	0	0
33	1	2	0	0	0	0	12	3	3	0	1	2	1	1	1	0	0	1	2	2	0	1	1	0	0	0	0	0
34	1	2	0	0	0	0	12	2	2	0	1	1	1	1	1	0	0	1	1	1	0	1	0	0	0	0	0	0
35	1	2	0	0	0	0	12	3	3	0	1	2	1	1	1	0	0	1	2	2	0	1	1	0	0	0	0	0
36	1	2	0	0	0	0	12	2	2	0	1	1	1	1	1	0	0	1	1	1	0	1	0	0	0	0	0	0
37	1	2	0	0	0	0	12	3	3	0	0	3	1	1	1	0	0	1	2	2	0	0	2	0	0	0	0	0
38	1	2	0	0	0	0	12	3	3	0	0	3	1	1	1	0	0	1	2	2	0	0	2	0	0	0	0	0
39	1	2	0	0	0	0	12	2	2	0	0	2	1	1	1	0	0	1	1	1	0	0	1	0	0	0	0	0
40	1	2	0	0	0	0	12	2	2	0	1	1	1	1	1	0	1	0	1	1	1	0	0	1	0	0	0	0

2. Coverage and Framework

❖ Coverage

- Exhaustiveness: urban, rural (urban/rural was classified down to commune). Small, large, and types of companies is classified by size of employees, and relevant definition. Exclusion: Establishments with Agriculture, forestry and fishing; Public administration; Activities of households as employers; Activities of extraterritorial organizations and bodies, specified in UN ISIC Rev. 4
- Accuracy: frequency of data collection for each source is defined by Statistics Law. The latest register update was at the last Economic Census 2011. Verification and validation of entries are done before Economic Census and Survey (full for census, selected sample EA for survey)
- Main source of the establishment listing is the listing operation of NIS. Source form other line ministries may help.



ក្រុមហ៊ុនចុះបញ្ជីពាណិជ្ជកម្ម Business Registration

I. NOTICE OF ESTABLISHMENT OF COMMERCIAL ENTERPRISE (Top 10/159)

☐ 1 . THE GRAND COINFLIP CO., LTD.

Form: Private Limited Company
Head Office: St.23 Tola, Group17, Preah Sihanouk province.
Business Objective: General Trade, Import Export, Transportation, Construction, Tourism and Agricultural-Industrial investment.
Term: 99 Years. Tel: 012884777
Registered Capital: 20,000,000 Riels divided into 1,000 shared at 20,000 Riels per share.
Name of Chairman: Mr.Rasmus Ove Fridberg, Occupation: Businessman, Nationality: Swiss
Current Address: Skyttvegeng, 81540, Sweden.
Agent of Registration: Mr.Rasmus Ove Fridberg, Director

☐ 2 . BELEKE IMPORT & EXPORT CO., LTD.

☐ 3 . ANGKOR MULTI-TRADES & SERVICES GROUP CO., LTD.

☐ 4 . REAL MAX (CAMBODIA) CO., LTD.

☐ 5 . CAMBODIAN DALIANG AGRICULTURE CO., LTD.

☐ 6 . MEDIFRAN INTERNATIONAL (CAMBODIA) IMPORT EXPORT CO., LTD.

☐ 7 . CHENG YUAN (CAMBODIA) PRINTER GARMENT CO., LTD.

☐ 8 . BOOST RICHE (CAMBODIA) CO., LTD.

☐ 9 . RADIANT REAL INVESTMENTS LIMITED.

☐ 10 . JPTE IMPORT EXPORT CO., LTD.

*សំគាល់: ទិន្នន័យក្រុមហ៊ុនដែលអាចស្វែងរកបានគឺចាប់ពី: Available data is between [03/2005] and [02/2014]

❖ Framework

- Definition of Statistical/Enumeration Unit (UN Definition): The establishment can be defined as an economic unit that engages, under a single legal entity – in one, or predominantly one, kind of economic activity at a single physical location – for example; a mine, factory, or workshop.
- System of National Accounts framework adopted: 1993

Classification used to identify economic activity: UN ISIC Rev. 4. Note: CambodiaSIC (CSIS) was developed

3. Content

- Unique business identifier: Municipality/Province, District/Khan/Krong, Commune/Sangkat, Village/Mondul, Enumeration Area (EA), Serial number with character identifier (for example M: Market)
- Contact details: business name, postal address, contact person, telephone. Not all are applicable for every establishment.
- Business characteristics (age (Year of starting the business), activity, employment, receipts, expenses, Capital/Share capital)
- Variables relating to business demography: birth can be identified directly, death and survival indicators is possible to identify at the next census/survey

4. Updating Guidelines and Procedures

- ❖ Planned for next economic census
- Maintenance of the register
 - ✓ Changes from census/survey data
 - ✓ Updates from administrative data
- Monitoring births and deaths
 - ✓ Comparing new listing to the previous ones

5. Current Uses of SBR

- Uses of SBR in the country
- ✓ Internal uses:
 - Preparation frame for economic census
 - Sampling frame for economic surveys
- ✓ Data for economic research (need official permission)

6. Issues and Limitations

1. Coverage: full, but need good practices, guidelines, standards and procedures
2. Confidentiality issues: individual information is restricted by law. Therefore, it also need good practices, guidelines, standards and procedures
3. Dissemination issues: limited. This needs to be upgraded in technology
4. Capacity and resources: training, hardware and software are required for better SBR development and uses

7. Future Plans

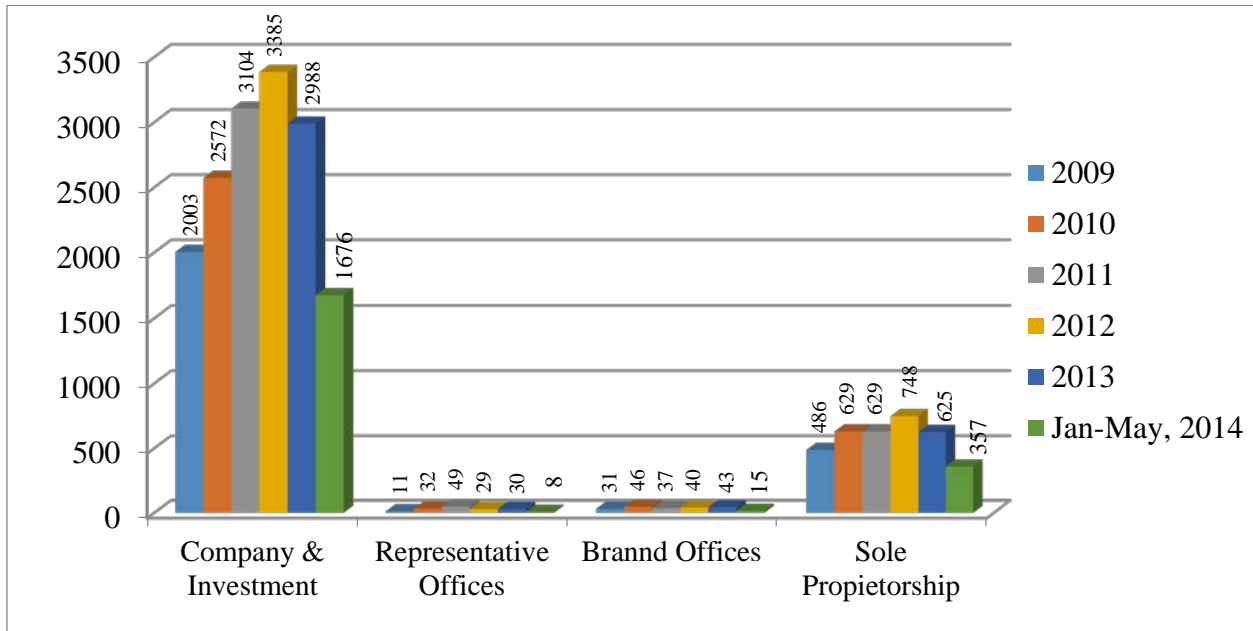
1. Form a dedicated team for management, coordination, administrative, IT, statistics to work on:
 - i. Management, coordination, administrative and authorization, legal matters
 - ii. Meetings/ workshops arrangement
 - iii. Contents, procedures and guidelines development
 - iv. IT system and dissemination
2. Develop on-line SBR
3. Capacity building based on good practices and experiences
4. Procedures and guidelines development
5. Consultation and dissemination workshops for users, feedbacks, and improvement

❖ Implementing SBR (R-CDTA 8594) in (Country): Milestones and Activities

Information Before Business Registers:

1. Company Name
2. Share Holder
3. Address in Cambodia or Abroad
4. Passport (Foreigner)
5. Cambodian Identify
6. Photo 4x6 = 4 sheet/person (Dean 6 Sheet)
7. Business Subject
8. Complete Form Business Registers
9. MEMORANDUM AND ARTICLES OF ASSOCIATION
10. Bank Confirm

• **Cambodia Statistics Business Registers**



Source: Ministry of Commerce, Kingdom of Cambodia

Top Ten Countries Business Registers in Cambodia

No.	Nationality Registers	2009	2010	2011	2012	2013	Jan-May, 2014
1	Chinese	136	299	545	707	674	393
2	Korean	123	249	303	306	233	118
3	Vietnamese	61	200	236	135	135	80
4	Malaysian	54	118	201	164	133	84
5	Frances	32	22	81	73	64	43
6	Singaporean	29	62	118	126	129	71
7	American	27	57	102	79	82	29
8	Indian	22	6	33	36	43	20
9	Thailand	21	57	127	128	147	78
10	Japanese	21	19	119	179	195	116

Source: Ministry of Commerce, Kingdom of Cambodia