



**BPS – STATISTICS INDONESIA**

Regional Course on Statistical Business Registers:  
Making a Business Case for an Operational Statistical Business Register  
26 – 30 January 2015, Perak, Malaysia  
Session 1.2: [Under Module 1- Understanding the role of SBRs]



---

★

# THE MAIN ORGANIZATIONAL AND OPERATIONAL CHALLENGES AND ISSUES IN ESTABLISHING THE INDONESIAN SBR

**Lien Suharni**

Head of Sub-directorate of The Development of Statistical  
Standardization and Classification, IBR Secretariat  
BPS – Statistics Indonesia

# Introduction

## Indonesia Economy

- Indonesia as a country that have a quite big population in the world, must have a big population enterprise/establishment.
  - People population of Indonesia now is 265 million
  - From Economic Census 2006, we have 22.7 million enterprise, how many is it now (2015)?
- The development of a very dynamic business needs to be monitored and anticipated through updated data.
- Administrative data as one of three methods of data collection is still not good maintained by the government
  - Business registration still diverse in many ministries based on industry with it's own regulation in each ministries

## The Development of BPS SBR (IBR)

- BPS structural organization for data collection is divided in 15 Subject Matter Areas (SMAs) based on industry. Each of them maintain their own data (not integrated yet).
- SNA 2008 is just started to implemented in BPS.
- IBR has been started developed in 2013 to support national account and achieve some purposes:



- ✓ IBR as data source for population and demography of economic units
- ✓ Provide a complete and comprehensive master frame for economic census/survey
- ✓ Facilitate coordination and data coverage integration of economic census/ survey.

- At the moment, BPS IBR is still in developing...

# The Main Issues in Establishing IBR

**SNA2008 Standard  
(Concept &  
Definition)  
Implementation  
Issue**

**Data Integration  
Issue (Internal &  
External)**

# SNA2008 Standard (Concept & Definition) Implementation Issue

- **New view in economic data collection**

- Statistical unit and institutional unit approach
- How to make SMAs and field enumerator accept the new concept/definition easily with the same perception.
- Variables collected based on the classification of statistical unit.

# Data Integration Issue

- **Data integration of all business directory maintained by SMAs**
  - The business directories was maintained by each subject matter such as manufacturing division maintaining directory of manufacturing business; construction division is maintaining directory of construction business; etc--- They worked stand alone.
  - Each subject matter was maintained different of variables or output
  - Matching the unit to avoid duplication
- **Data Directory Maintenance**
  - Different mechanism and procedure (no standard for maintaining directories)
  - Not unique Id across SMAs
  - Only a few SMAs have an up to date directory
  - Distribute the profiling and updating work to SMAs & BPS regional offices
  - Establishment as the typical statistical unit.

- **Survey Frame Production**
  - Using business directories from SMAs and not integrated yet.
  - How to migrate to IBR
- **Business register report/publication**
  - Not yet available
- **Classify industry codes for enterprises that have more than one establishment with different industry activities.**
  - How does we do it.
  - Which SMAs will be responsible for the maintenance of these enterprise
- **Classify codes for enterprises by institutional sector**
  - Not yet available in data collection/ Not yet prepared
- **Information from external sources**
  - On the Internet : It often incomplete/ updated information
  - On the Administrative data: not yet used maximal, need quality control.

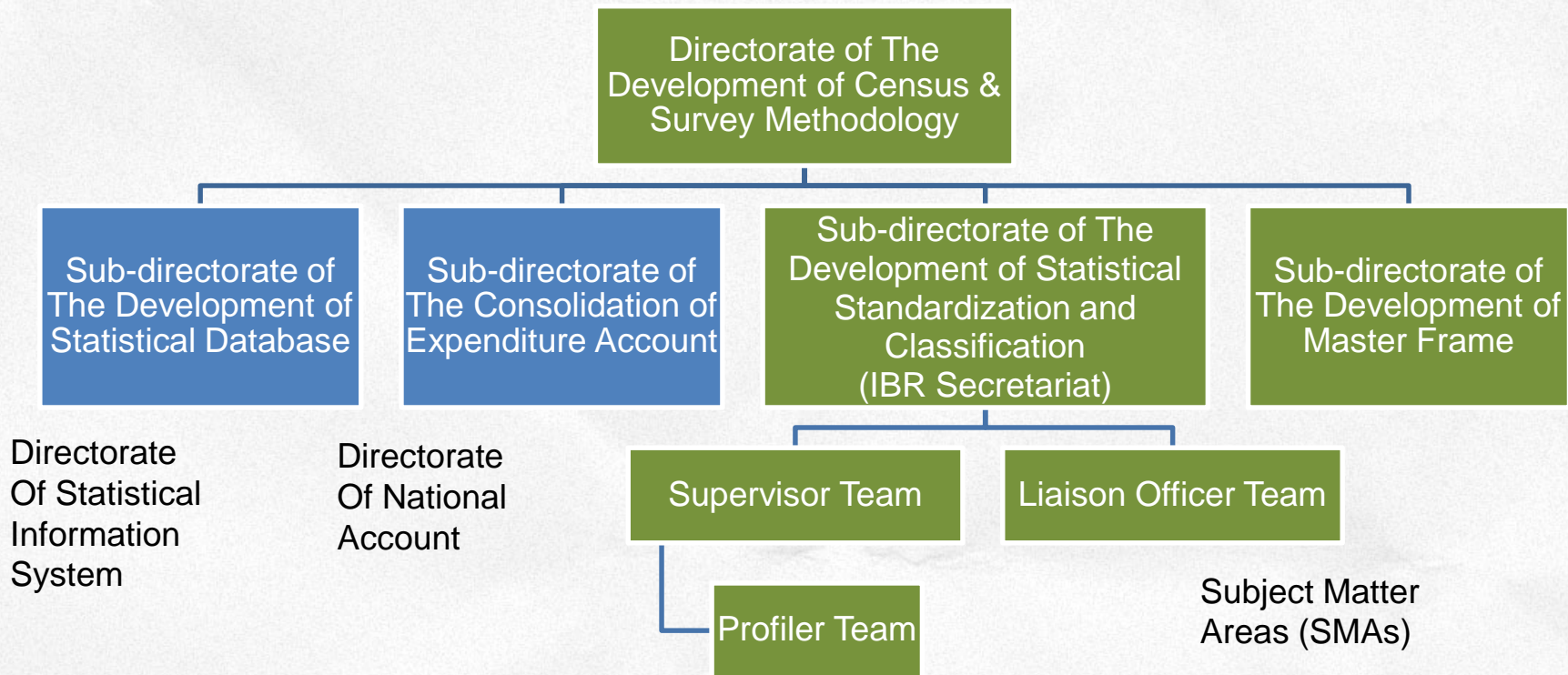
# Steps We Do in Building the Indonesia SBR

Currently, there are several directories of companies/establishments maintained by respective survey areas that BPS intends to consolidate and integrate in a SBR to be used efficiently for the conduct of censuses and surveys of businesses.

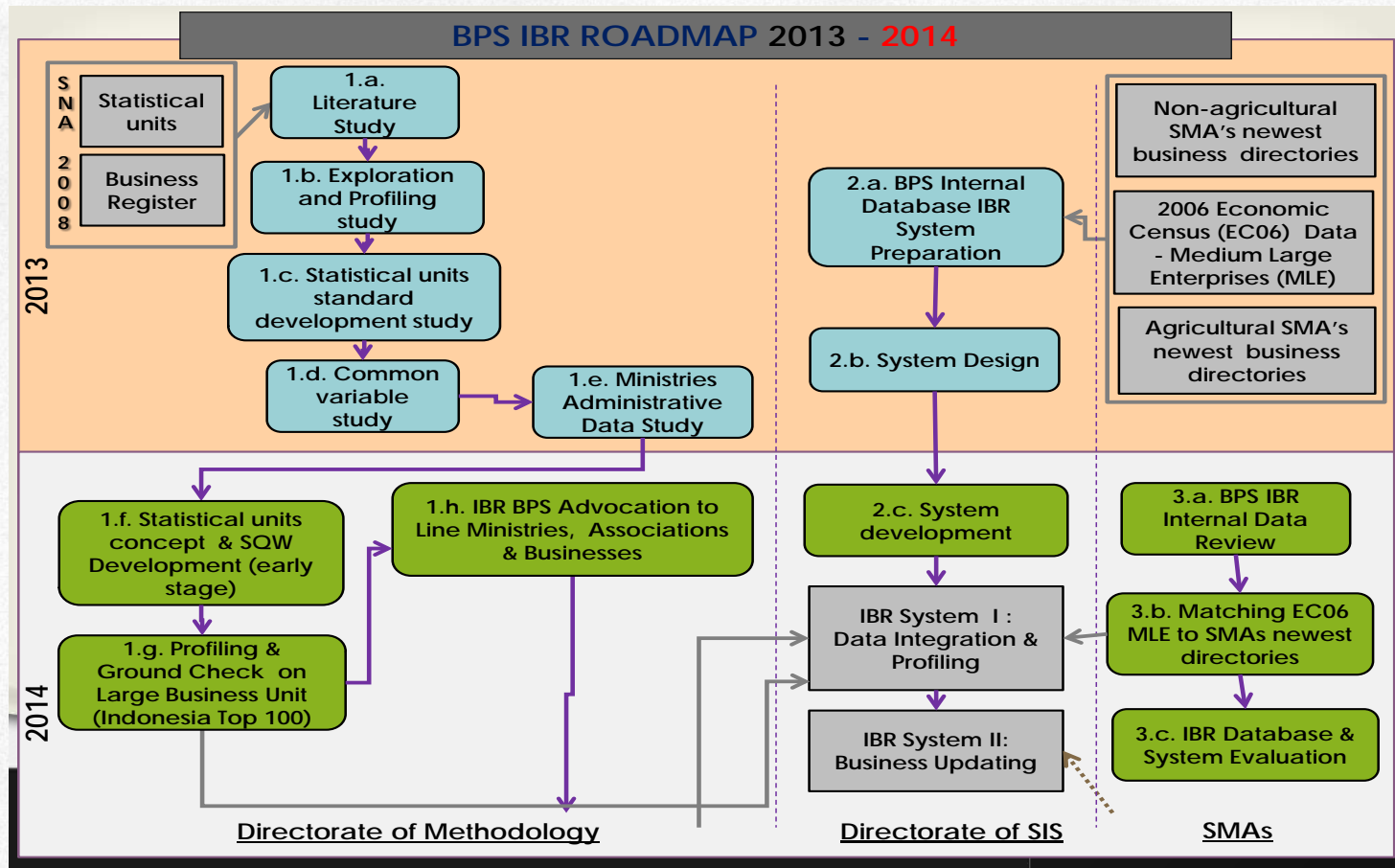
BPS SBR called **Integrated Business Register (IBR)**. The IBR will become the single source of current and comprehensive information on business establishment and companies for the economic statistics programs in BPS. It will also serve as a sampling frame for all economics surveys and censuses.



# IBR Integration Team



# Further work of IBR conceptualization and development conceived on a roadmap as a work guidance:



# CONTACT US

WE WOULD BE HAPPY TO KNOW YOU

## ADDRESS

Sekretariat Integrated Business Register  
Direktorat Pengembangan Metodologi  
Sensus dan Survei  
Badan Pusat Statistik RI  
Jl. Dr. Sutomo No. 6-8 Jakarta 10710  
Indonesia

## E-MAIL

[sekretariatibr@bps.go.id](mailto:sekretariatibr@bps.go.id)

## WEBSITE

<http://ibr.bps.go.id>



**BPS – STATISTICS INDONESIA**

---

**THANK YOU FOR LISTENING**

SEE YOU SOON!