
COUNTRY REPORT



AGRICULTURAL DATA AND INFORMATION SYSTEM IN INDONESIA

Regional Workshop on Statistical Literacy:
Increasing Effective Use of Agricultural and Rural Statistics

13-17 July 2015
Daejeon, Republic of Korea

AGENDA

- I. Introduction
- II. Ministry of Agricultural Organization and
Agricultural Statistic Organization
- III. Agricultural Data Management
- IV. Increasing Statistical Literacy :
 - A. Input (Database, publication, data collection
methodologies, e-form and IT services)
 - B. Target Groups
 - C. Self Assessment
- V. Communication Practices

I. INTRODUCTION

INDONESIA IN THE WORLD MAP



INDONESIA

- ✓ Area : Land 1.9 millions Sq. Km
Sea 8 millions Sq. Km (including EEZ)
- ✓ Population : 237.64 Millions (2010)
±60% people live at rural areas
±61,2% employment at rural areas work at
agricultural sector
- ✓ Location : 6⁰ 08¹ North - 11⁰ South
94⁰ 45¹ - 141⁰ longitude
- ✓ Season : Dry Season ; April - September
Wet Season; October - March.

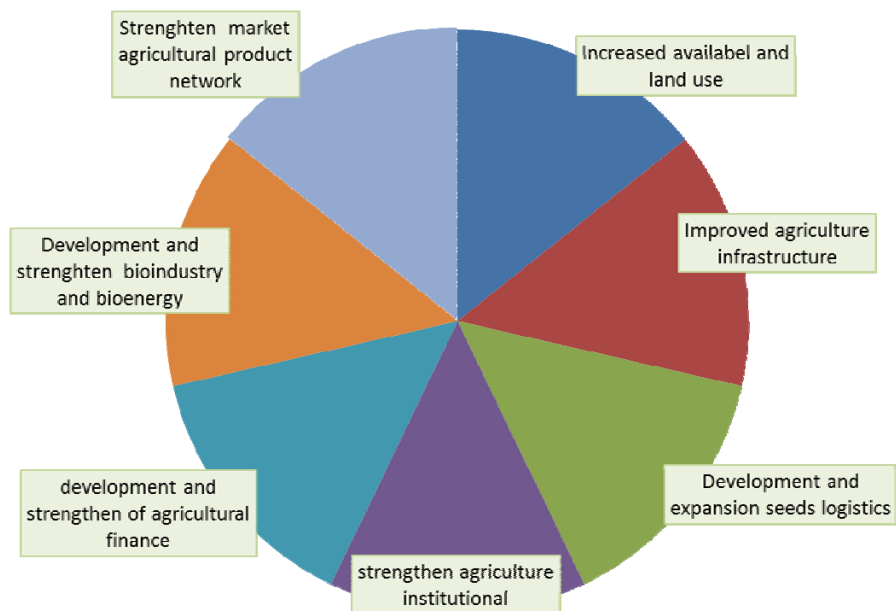
II. MINISTRY OF AGRICULTURAL (MOA) ORGANIZATION AND AGRICULTURAL STATISTICS ORGANIZATION

MOA

VISION	MISSIONS
Realization food agricultural system -bioindustry sustainable produce diverse food Healthy and products high value-added based local resource to food sovereignty and farmers welfare "	<ol style="list-style-type: none">1. To achieve food sovereignty2. To achieve agriculture bioindustry sustainable system3. To achieve farmer welfare4. To achieve bureaucracy reformation

7

Main Strategy MOA



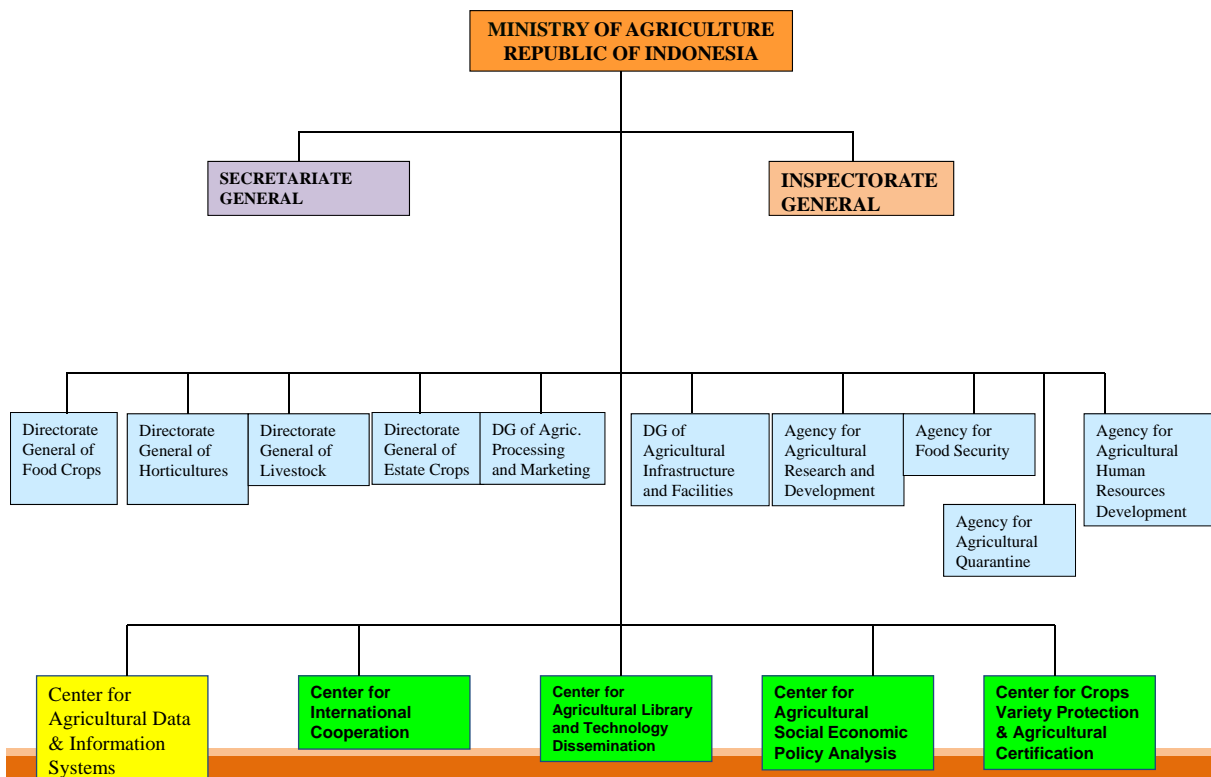
8

SUPPORTING STRATEGY IN MOA

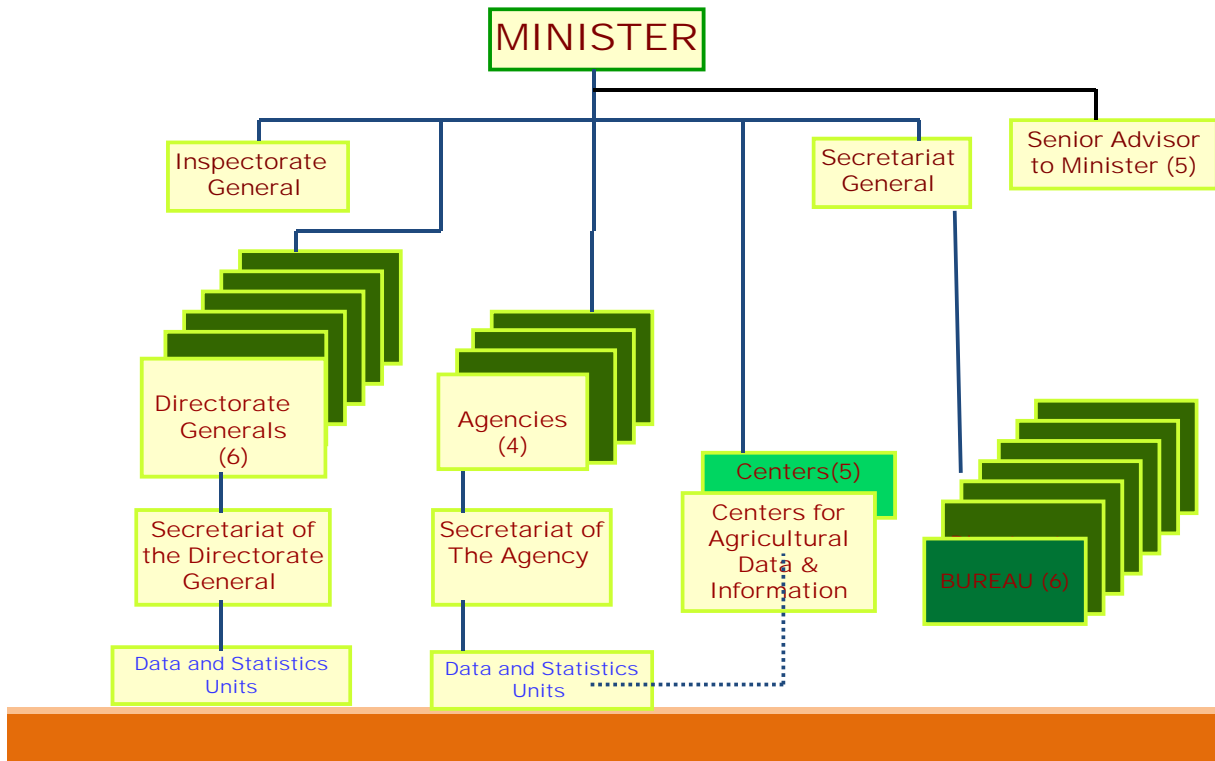
1. Strengthening and human resources agricultural capacity building
2. Improved support for quarantine
3. Improved support for innovation and technology
4. Service public information
5. Management of regulation
6. Management of information and communication technology
7. Management Planning
8. Structuring and strengthening of the organization
9. Management control system

9

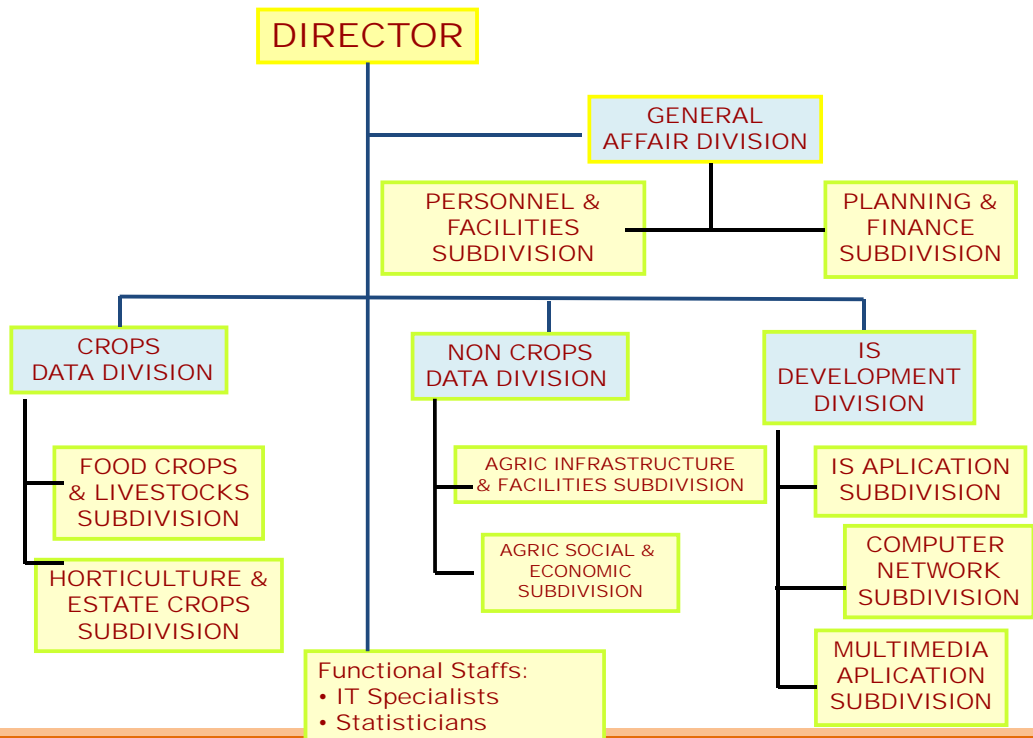
MOA ORGANIZATIONAL STRUCTURE



ORGANIZATION OF STATISTICAL SYSTEM WITHIN MOA



CENTER FOR AGRICULTURAL DATA AND INFORMATION SYSTEMS (CADIS)



TWO MAIN TASKS OF CADIS

- (a) To conduct agricultural statistics and information systems services,
 - (b) To conduct capacity building in agricultural statistics and information systems
-

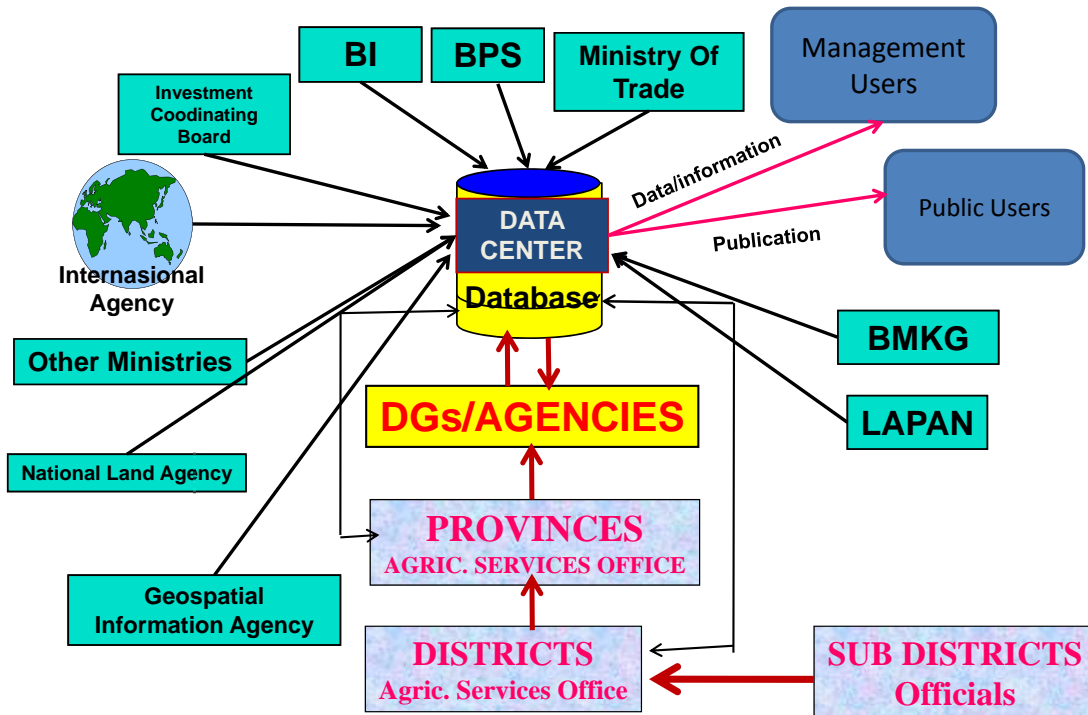
VISION AND MISSION OF CADIS

Vision: To become a leading centre in providing agricultural data and information

Missions:

- ❖ To continuously develop and improve methodologies for data collection, processing, analysis, and publications
 - ❖ To conduct data collection, processing, analysis, publication, and dissemination.
 - ❖ To develop and operate agricultural information systems.
 - ❖ To continuously improve skills and knowledge of human resources in statistics and information system.
-

DATA and INFORMATION FLOW



Main Programs

1

To provide agricultural data and information services

2

To provide networks infrastructure and agricultural information system services

3

Capacity building on statistics and information technology

1. Agricultural data and information services

- a) Methodologies and systems development
- b) Develop guidelines and standard operating procedures in data management activities
- c) Socialization of systems and methodologies
- d) Implementation
 - Data collections in sub districts
 - Data verifications, validations, and data entry at district level
 - Data verifications, validations, supervision at province level
 - Data verifications, validations, supervision at central level
 - Updating the database

1. *Agricultural data and information services... continued*

- e) Publications
 - Provide standard in agricultural statistics publication at district, province, and central level
 - Data analysis and forecasting
 - Agricultural statistic publications
- f) Data/statistics dissemination through website
- g) Conduct evaluation survey (customers satisfaction)

2. Networks infrastructure and agricultural information system services

- To provide computer networking services
 - To provide agricultural information systems development services and access
 - To provide multimedia application development services
-

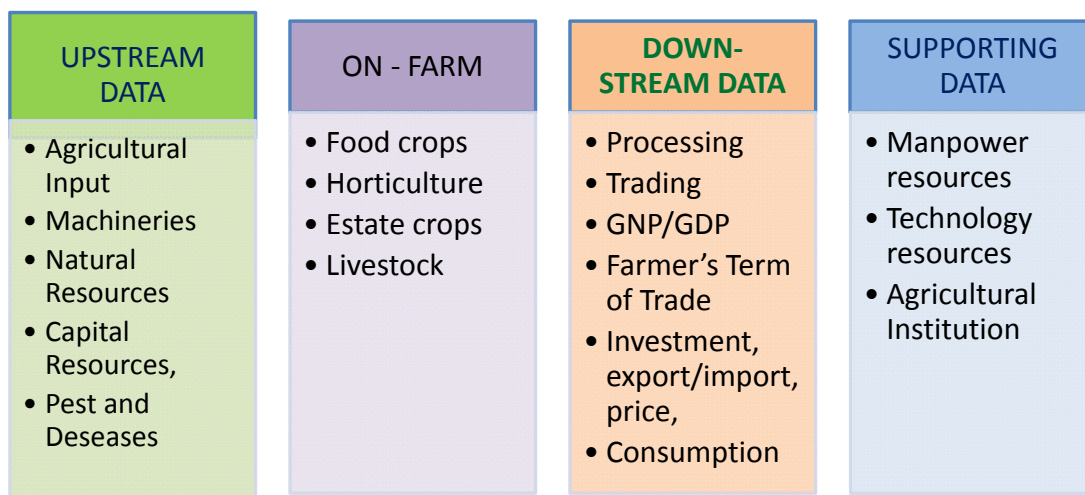
3. Capacity building on statistics and information technology

- Statistical knowledge and skills improvement:
 - Data collection and sampling survey method
 - Data Processing method
 - Data analysis method
 - Data presentations and publications
 - Information communication technology knowledge and skills improvement:
 - Office software applications
 - Internet
 - Emailing
 - Website Design
 - Multimedia
 - Programming
 - Systems analysis and design
-

III. AGRICULTURAL DATA MANAGEMENT

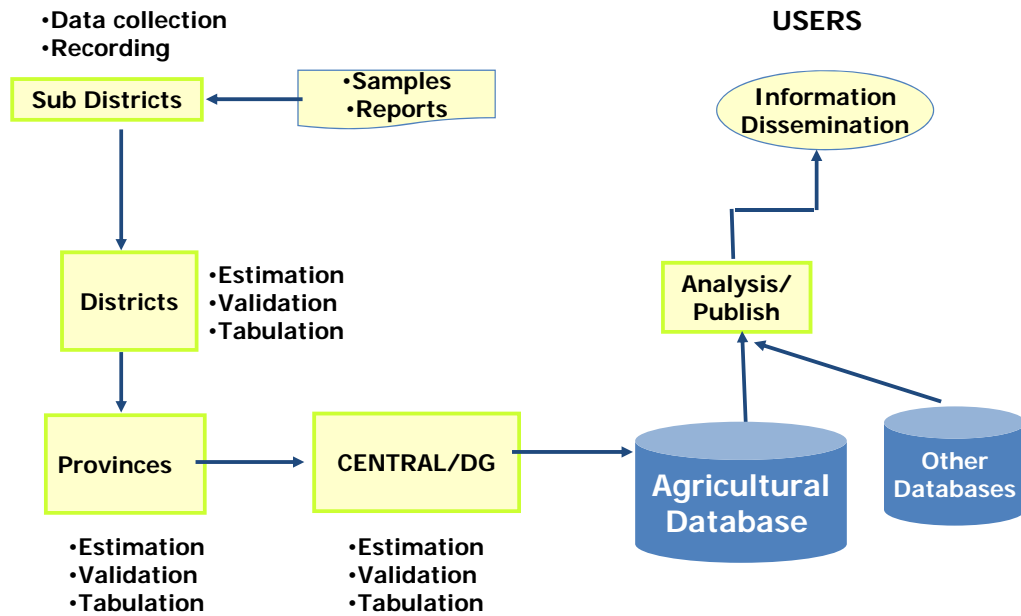
21

AGRICULTURAL DATA

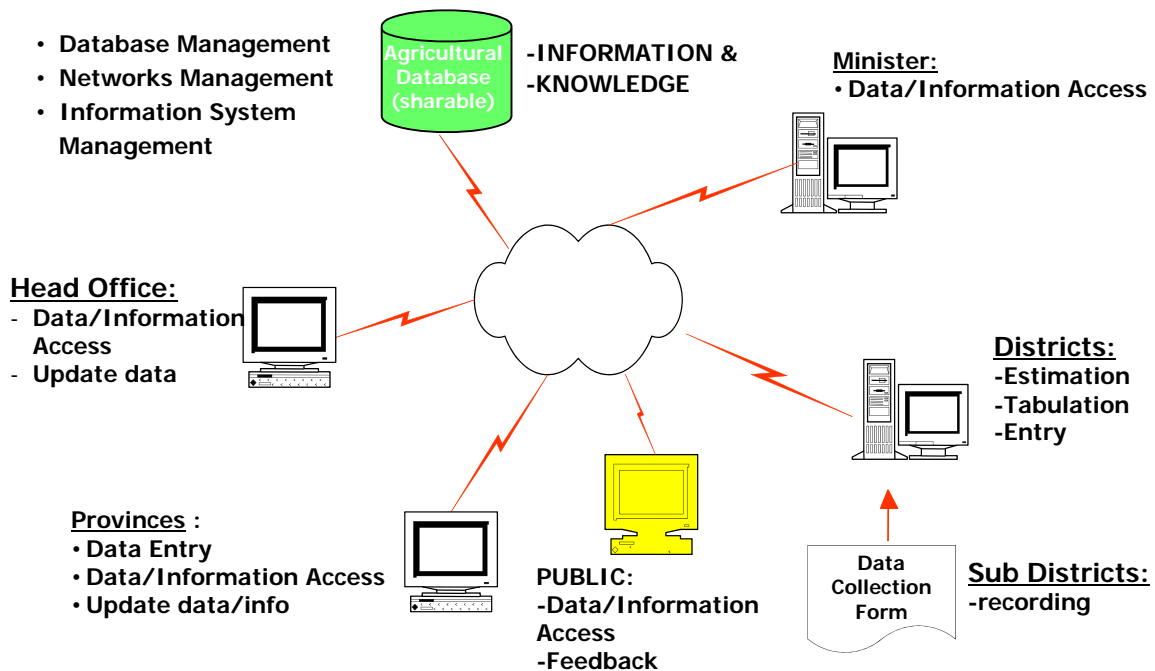


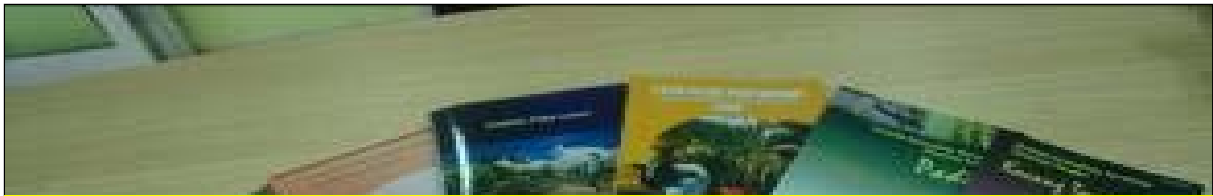
22

AGRICULTURAL DATA FLOW (TRADITIONAL SYSTEM)



AGRICULTURAL DATA FLOW (ELECTRONIC FORM)





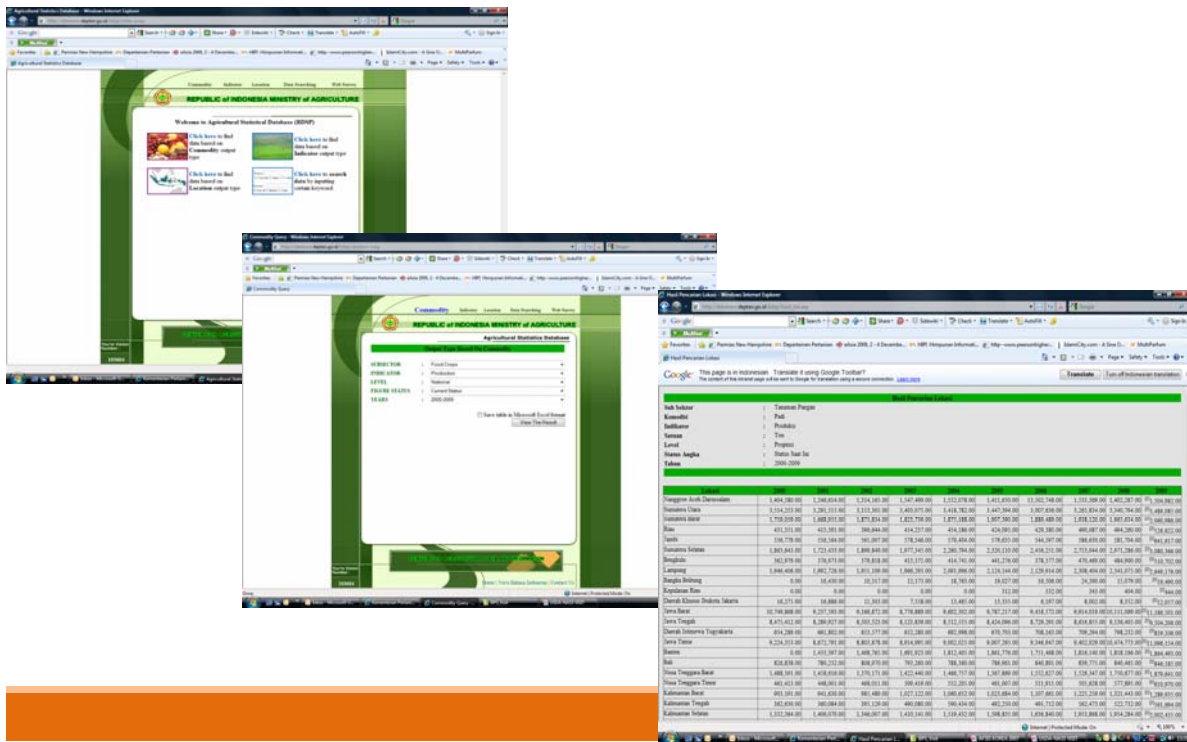
IV. INCREASING STATISTICAL LITERACY



A. INPUT



A.1. Statistical database for agricultural commodities (Foodcrops, Horticulture, Estate Crops, and Livestock)



A.2. Statistical database for agricultural infrastructure and social-economics

- Export – Import
- GDP
- Per Capita Consumption
- Land Use
- Population, employment and poverty
- Agriculture machinery, fertilizer, and seed



A.3. Statistical Publications

- Agricultural Statistics, annually
- Foodcrops commodities Outlook, annually
- Horticulture commodities Outlook, annually
- Estate crops commodities Outlook, annually
- Livestock commodities Outlook, annually
- Agricultural macro-economic Indicators, quarterly and annually
- Bulletin of agricultural Gross Domestic Product(quarterly)
- Bulletin of agric. export/import (monthly)
- Bulletin of agric. commodities price (monthly)
- Bulletin of international price (semiannually)
- Analysis of agricultural trade performance
- Analysis on Farmers Welfare
- Paddy Field Base Map (Java)

A.4. Improving of Data Collection Methodologies

- Methodology for Foodcrops data collection
- Methodology for Horticulture data collection
- Methodology for Estate crops data collection
- Methodology for Livestocks data collection
- Methodology for farmer welfare survey
- Methodology for stock and consumption survey
- Methodology for paddy field mapping by GPS
- Methodology for Paddy field Mapping by using satellite imagery



A.5. Electronic Forms for data Entry and Reporting

- e-Form for Food Crops
- e-Form for Horticulture
- e-Form for Estate Crops
- e-Form for Live stocks

A.6. NETWORKS INFRASTRUCTURE AND AGRICULTURAL INFORMATION SYSTEM SERVICES

A.6.1. Computer Network Services

- Network Infrastructure
- Internet access (browsing)
- Hot spots services
- E-Mailing
- Documentation of computer network system in MOA
- Helpdesk services for network system
- Ministry of Agriculture Data Center Operation
- Computer laboratory services

A.6.2. Information system applications services

- Management Information System for: personnel, project monitoring, extensions, finance, facilities, and office administration
- Agricultural database access services
- Geographic Information System services
- Implementation of Electronic Forms
- **e-Petani (e-Farmers) portal**
- National Single Windows project support
- **Village Agribusiness information system**
- Online buying & selling
- Online recruitment



A.6.3. Multimedia Applications Services

- Maintaining and updating Website of Ministry of Agriculture (MOA)
- MOA Website for mobile/WAP
- CD series for Training Material in Agricultural Technology
- Multimedia portal for agriculture (video collection database)
- Agriculture website contest (yearly)
- Touchscreen Information Kiosks
- SMS Center and Agriculture Consultation Forum

B. TARGET GROUPS

Capacity building on Statistics and Information Technology

35

Trainings and Socializations

TRAINING & SOCIALIZATION	1. Statistics Training for official provinces and districts
	2. Computer applications and networks training for provinces and districts
	3. Training for Statisticians (central staff)
	4. Training of GPS utilization for paddy field mapping
	5. Training of GPS utilization for Estate Crops Area mapping

36

TRAINING & SOCIALIZATION	6. Training in Geographics Information System
	7. Elektronik form training for provinces and distric
	8. e-Petani training for Extension workers and famers (FEATI project)

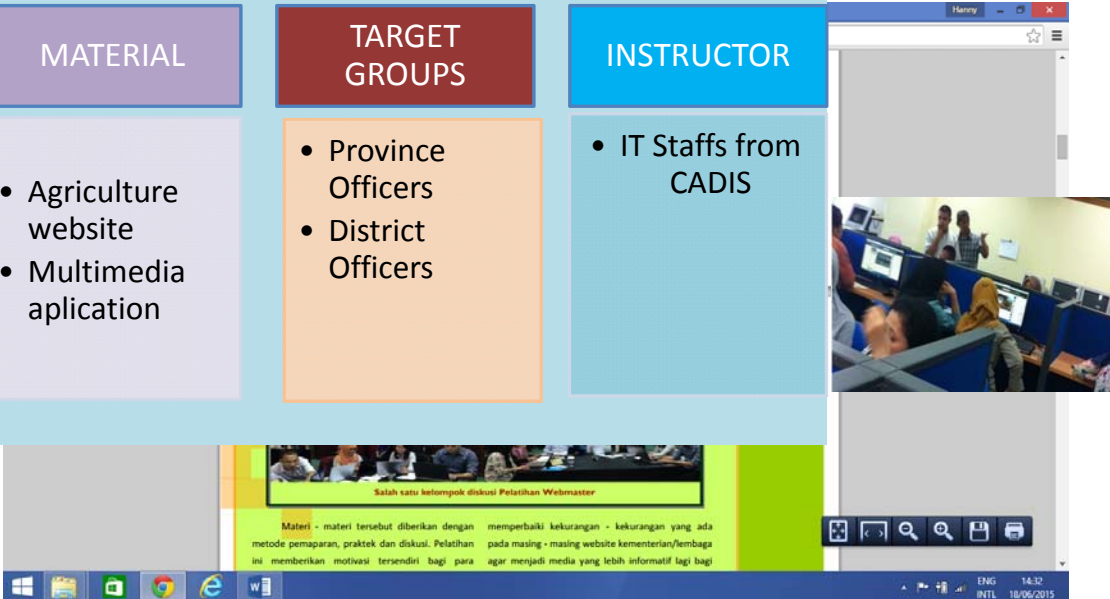
1. Statistics Training for provinces and districts



MATERIAL	TARGET GROUP	INSTRUCTOR
<ul style="list-style-type: none">• Theory and practice : Data collection methodologies (Food Crops, Horticulture, Estate crops, Livestock)	<ul style="list-style-type: none">• Provinces Officer• District Officer• Sub District Officer / Mantri Tani	<ul style="list-style-type: none">• Statistician from CADI

2. Computer applications and networks training for provinces and districts

MATERIAL	TARGET GROUPS	INSTRUCTOR
<ul style="list-style-type: none">• Agriculture website• Multimedia application	<ul style="list-style-type: none">• Province Officers• District Officers	<ul style="list-style-type: none">• IT Staffs from CADIS



The image shows a screenshot of a training session. On the left, there is a presentation slide with the following text: "Salah satu kelompok diskusi Pelatihan Webmaster". Below this, it says: "Materi - materi tersebut diberikan dengan metode pemaparan, praktek dan diskusi. Pelatihan ini memberikan motivasi tersendiri bagi para memperbaiki kekurangan - kekurangan yang ada pada masing - masing website kementerian/lembaga agar menjadi media yang lebih informatif lagi bagi". On the right, there is a photograph of a classroom where several people are seated at desks with computers, and an instructor is standing at the front.

39

3. In House Training for Statisticians


- To improve knowledge and skill for Statisticians
- Material :
 - Econometry,
 - SPSS
 - Costumer satisfaction analisys



40

4. Training of GPS utilization for paddy field mapping


MATERIAL	TARGET GROUPS	INSTRUCTOR
<ul style="list-style-type: none">Theory and practice GPS utilization for paddy field mapping	<ul style="list-style-type: none">Provinces OfficerDistrict OfficerSub District Officer	<ul style="list-style-type: none">Statisticians



41

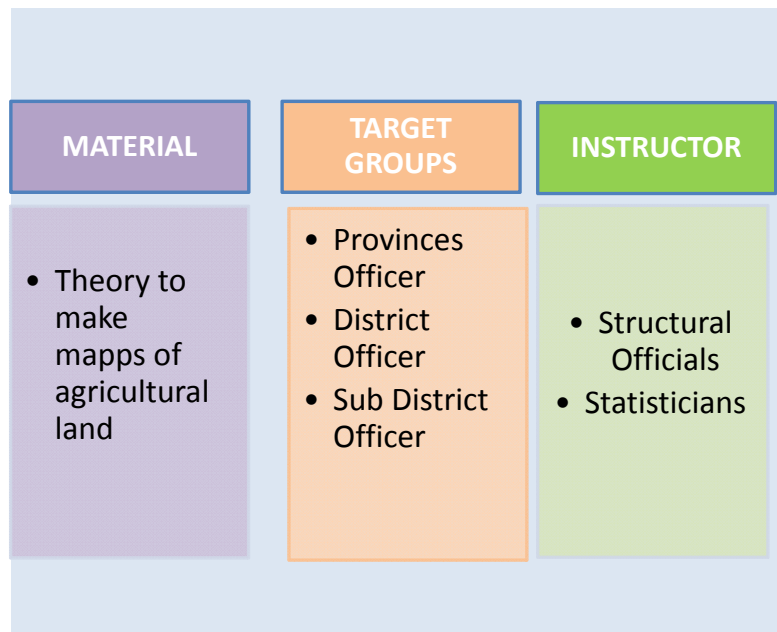
5. Training of GPS utilization for Estate Crops Area mapping

MATERIAL	TARGET GROUPS	INSTRUCTOR
<ul style="list-style-type: none">Theory and practice GPS utilization for Estate Crops Area mapping	<ul style="list-style-type: none">Provinces OfficerDistrict OfficerSub District Officer	<ul style="list-style-type: none">Statisticians



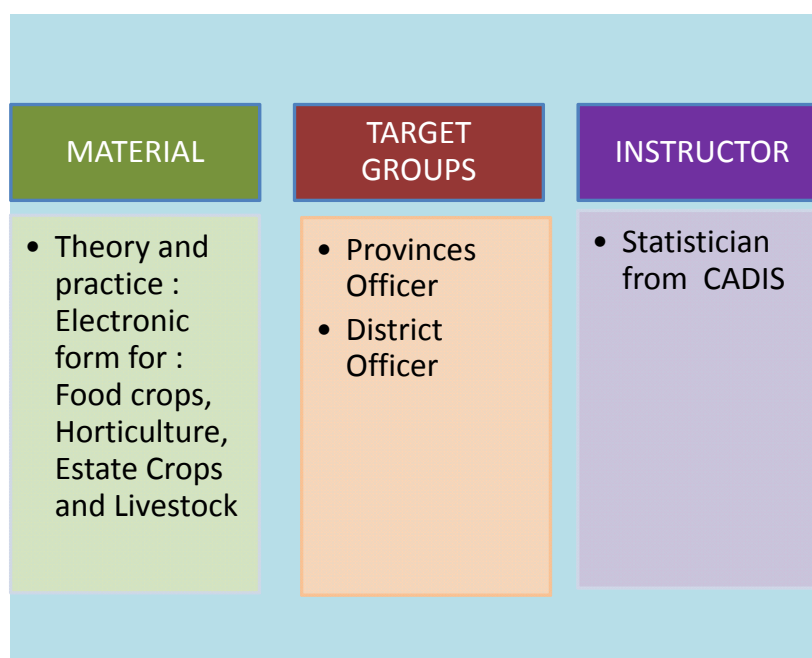
42

6. Training in Geographics Information System



43

7. Elektronik form training for provinces and distric



44

8. e-Petani training for Extension workers and famers (FEATI project)



- Target Groups: farmers/ fishermen
- To improve capacity and communication computers and internet-based farmers.
- This trained aims to help farmers and fishermen in the interaction network of agribusiness information
- They can interact directly information to facilitate the flow of information about the development and marketing of their agricultural products

C. SELF ASSESSMENT

CONDUCTING SERVICE SATISFACTION SURVEY

Respondents :

- Official Staffs of MoA
- Official staffs of Provincial level
- Public who obtain data and information from CADIS

Method

- Questionnaire → Respondent should assess the expectations and reality they obtain from CADIS regarding the data services, publications, human resource development and information technology services, capacity building.
- Online survey → through agricultural website
- The survey can know the level of user satisfaction due to the services provided by CADIS

47



V. COMMUNICATION PRACTICES



INTERACT WITH KEY USERS

1. REGURAL MEETING at CADIS

Schedule → monthly

Participant → all stakeholders on data and statistics unit within Ministry of Agriculture

Agenda → releases update monthly data on harvested area and production of food crops

2. WORKSHOP and TRAINING SESSION

Schedule → annually

Participant → all stakeholders on data and statistics unit within Ministry of Agriculture

Agenda → discussion on data collection methodologies, data analysis and dissemination

49

TOOL COMMUNICATION

1. Provide computer kiosk or [interactive kiosk](#) at each building within Ministry of agriculture

→ Accessible to all visitors/guests in Ministry of Agriculture

→ Provide information about the ministry of agriculture, such as building directories, official name, etc

2. Data dissemination product

- Statistical Books
- Bulletins
- On-line publications
- On-line databases

50

3. Media Releases

1. Website

→ Data, publication

2. National Radio/TV

→ Agricultural Price data broadcast

→ Daily

goid:webkagab@BPTL.go.id

LHK 01 - Laporan Harian Harga Produsen Komoditas Pangan Tingkat Kabupaten/Kota
 Status data: Rp 142
 Tanggal: 29 Jun 2014

No.	Nama Kabupaten/Kota	Kubuk/Cabuk (KAP)(CKK)	Beras	Beras Pengaliran Karir	Kedelai Karir	Kacang Hijau RPP	Kacang Kuning RPP	Ubi Kayu	Ubi Jalar	Cajangk
1	Kab. Aceh Barat	4.300	1.500	1.500	0	0	12.000	0	0	0
2	Kab. Aceh Besar	4.300	1.500	1.500	0	0	12.000	200	2.000	0
3	Kab. Aceh Selatan	4.300	1.500	1.500	0	0	12.000	0	0	0
4	Kab. Aceh Tenggara	4.300	1.500	1.500	0	0	12.000	0	0	0
5	Kab. Aceh Timur	4.300	1.500	1.500	0	0	12.000	0	0	0
6	Kab. Aceh Utara	4.300	1.500	1.500	0	0	12.000	0	0	0
7	Kab. Bener Meriah	4.300	1.500	1.500	0	0	12.000	0	0	0
8	Kab. Bireuen	4.300	1.500	1.500	0	0	12.000	0	0	0
9	Kab. Gayo Lues	4.300	1.500	1.500	0	0	12.000	0	0	0
10	Kab. Nagan Raya	4.300	1.500	1.500	0	0	12.000	0	0	0
11	Kab. Pidie	4.300	1.500	1.500	0	0	12.000	0	0	0
12	Kab. Pidie Jaya	4.300	1.500	1.500	0	0	12.000	0	0	0
13	Kab. Simeulue	4.300	1.500	1.500	0	0	12.000	0	0	0
14	Kab. Subulussalam	4.300	1.500	1.500	0	0	12.000	0	0	0
15	Kab. Takengon	4.300	1.500	1.500	0	0	12.000	0	0	0
16	Kab. Tanah Bata	4.300	1.500	1.500	0	0	12.000	0	0	0
17	Kab. Tanah Tair	4.300	1.500	1.500	0	0	12.000	0	0	0
18	Kab. Aceh Barat Daya	4.300	1.500	1.500	0	0	12.000	0	0	0
19	Kab. Aceh Selatan	4.300	1.500	1.500	0	0	12.000	0	0	0
20	Kab. Aceh Tenggara	4.300	1.500	1.500	0	0	12.000	0	0	0
21	Kab. Aceh Timur	4.300	1.500	1.500	0	0	12.000	0	0	0
22	Kab. Aceh Utara	4.300	1.500	1.500	0	0	12.000	0	0	0
23	Kab. Bener Meriah	4.300	1.500	1.500	0	0	12.000	0	0	0
24	Kab. Bireuen	4.300	1.500	1.500	0	0	12.000	0	0	0
25	Kab. Gayo Lues	4.300	1.500	1.500	0	0	12.000	0	0	0
26	Kab. Nagan Raya	4.300	1.500	1.500	0	0	12.000	0	0	0
27	Kab. Pidie	4.300	1.500	1.500	0	0	12.000	0	0	0
28	Kab. Pidie Jaya	4.300	1.500	1.500	0	0	12.000	0	0	0
29	Kab. Simeulue	4.300	1.500	1.500	0	0	12.000	0	0	0
30	Kab. Subulussalam	4.300	1.500	1.500	0	0	12.000	0	0	0
31	Kab. Takengon	4.300	1.500	1.500	0	0	12.000	0	0	0
32	Kab. Tanah Bata	4.300	1.500	1.500	0	0	12.000	0	0	0
33	Kab. Tanah Tair	4.300	1.500	1.500	0	0	12.000	0	0	0
34	Kab. Aceh Barat Daya	4.300	1.500	1.500	0	0	12.000	0	0	0
35	Kab. Aceh Selatan	4.300	1.500	1.500	0	0	12.000	0	0	0
36	Kab. Aceh Tenggara	4.300	1.500	1.500	0	0	12.000	0	0	0
37	Kab. Aceh Timur	4.300	1.500	1.500	0	0	12.000	0	0	0
38	Kab. Aceh Utara	4.300	1.500	1.500	0	0	12.000	0	0	0
39	Kab. Bener Meriah	4.300	1.500	1.500	0	0	12.000	0	0	0
40	Kab. Bireuen	4.300	1.500	1.500	0	0	12.000	0	0	0
41	Kab. Gayo Lues	4.300	1.500	1.500	0	0	12.000	0	0	0
42	Kab. Nagan Raya	4.300	1.500	1.500	0	0	12.000	0	0	0
43	Kab. Pidie	4.300	1.500	1.500	0	0	12.000	0	0	0
44	Kab. Pidie Jaya	4.300	1.500	1.500	0	0	12.000	0	0	0
45	Kab. Simeulue	4.300	1.500	1.500	0	0	12.000	0	0	0
46	Kab. Subulussalam	4.300	1.500	1.500	0	0	12.000	0	0	0
47	Kab. Takengon	4.300	1.500	1.500	0	0	12.000	0	0	0
48	Kab. Tanah Bata	4.300	1.500	1.500	0	0	12.000	0	0	0
49	Kab. Tanah Tair	4.300	1.500	1.500	0	0	12.000	0	0	0
50	Kab. Aceh Barat Daya	4.300	1.500	1.500	0	0	12.000	0	0	0
51	Kab. Aceh Selatan	4.300	1.500	1.500	0	0	12.000	0	0	0
52	Kab. Aceh Tenggara	4.300	1.500	1.500	0	0	12.000	0	0	0
53	Kab. Aceh Timur	4.300	1.500	1.500	0	0	12.000	0	0	0
54	Kab. Aceh Utara	4.300	1.500	1.500	0	0	12.000	0	0	0
55	Kab. Bener Meriah	4.300	1.500	1.500	0	0	12.000	0	0	0
56	Kab. Bireuen	4.300	1.500	1.500	0	0	12.000	0	0	0
57	Kab. Gayo Lues	4.300	1.500	1.500	0	0	12.000	0	0	0
58	Kab. Nagan Raya	4.300	1.500	1.500	0	0	12.000	0	0	0
59	Kab. Pidie	4.300	1.500	1.500	0	0	12.000	0	0	0
60	Kab. Pidie Jaya	4.300	1.500	1.500	0	0	12.000	0	0	0
61	Kab. Simeulue	4.300	1.500	1.500	0	0	12.000	0	0	0
62	Kab. Subulussalam	4.300	1.500	1.500	0	0	12.000	0	0	0
63	Kab. Takengon	4.300	1.500	1.500	0	0	12.000	0	0	0
64	Kab. Tanah Bata	4.300	1.500	1.500	0	0	12.000	0	0	0
65	Kab. Tanah Tair	4.300	1.500	1.500	0	0	12.000	0	0	0
66	Kab. Aceh Barat Daya	4.300	1.500	1.500	0	0	12.000	0	0	0
67	Kab. Aceh Selatan	4.300	1.500	1.500	0	0	12.000	0	0	0
68	Kab. Aceh Tenggara	4.300	1.500	1.500	0	0	12.000	0	0	0
69	Kab. Aceh Timur	4.300	1.500	1.500	0	0	12.000	0	0	0
70	Kab. Aceh Utara	4.300	1.500	1.500	0	0	12.000	0	0	0
71	Kab. Bener Meriah	4.300	1.500	1.500	0	0	12.000	0	0	0
72	Kab. Bireuen	4.300	1.500	1.500	0	0	12.000	0	0	0
73	Kab. Gayo Lues	4.300	1.500	1.500	0	0	12.000	0	0	0
74	Kab. Nagan Raya	4.300	1.500	1.500	0	0	12.000	0	0	0
75	Kab. Pidie	4.300	1.500	1.500	0	0	12.000	0	0	0
76	Kab. Pidie Jaya	4.300	1.500	1.500	0	0	12.000	0	0	0
77	Kab. Simeulue	4.300	1.500	1.500	0	0	12.000	0	0	0
78	Kab. Subulussalam	4.300	1.500	1.500	0	0	12.000	0	0	0
79	Kab. Takengon	4.300	1.500	1.500	0	0	12.000	0	0	0
80	Kab. Tanah Bata	4.300	1.500	1.500	0	0	12.000	0	0	0
81	Kab. Tanah Tair	4.300	1.500	1.500	0	0	12.000	0	0	0
82	Kab. Aceh Barat Daya	4.300	1.500	1.500	0	0	12.000	0	0	0
83	Kab. Aceh Selatan	4.300	1.500	1.500	0	0	12.000	0	0	0
84	Kab. Aceh Tenggara	4.300	1.500	1.500	0	0	12.000	0	0	0
85	Kab. Aceh Timur	4.300	1.500	1.500	0	0	12.000	0	0	0
86	Kab. Aceh Utara	4.300	1.500	1.500	0	0	12.000	0	0	0
87	Kab. Bener Meriah	4.300	1.500	1.500	0	0	12.000	0	0	0
88	Kab. Bireuen	4.300	1.500	1.500	0	0	12.000	0	0	0
89	Kab. Gayo Lues	4.300	1.500	1.500	0	0	12.000	0	0	0
90	Kab. Nagan Raya	4.300	1.500	1.500	0	0	12.000	0	0	0
91	Kab. Pidie	4.300	1.500	1.500	0	0	12.000	0	0	0
92	Kab. Pidie Jaya	4.300	1.500	1.500	0	0	12.000	0	0	0
93	Kab. Simeulue	4.300	1.500	1.500	0	0	12.000	0	0	0
94	Kab. Subulussalam	4.300	1.500	1.500	0	0	12.000	0	0	0
95	Kab. Takengon	4.300	1.500	1.500	0	0	12.000	0	0	0
96	Kab. Tanah Bata	4.300	1.500	1.500	0	0	12.000	0	0	0
97	Kab. Tanah Tair	4.300	1.500	1.500	0	0	12.000	0	0	0
98	Kab. Aceh Barat Daya	4.300	1.500	1.500	0	0	12.000	0	0	0
99	Kab. Aceh Selatan	4.300	1.500	1.500	0	0	12.000	0	0	0
100	Kab. Aceh Tenggara	4.300	1.500	1.500	0	0	12.000	0	0	0

Thank you